

MITJAVILA



BIOCLIMATIC CANOPY MATHILDA V2

- Easy to assemble
- Thermal protection in summer
- Brightness in Winter
- Manually adjustable slat
- Estructura 100% aluminio



www.mitjavila.com



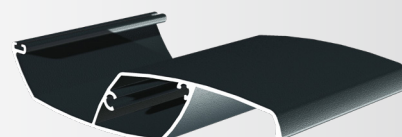
Dimensions:

Width: 2m maximum / modules

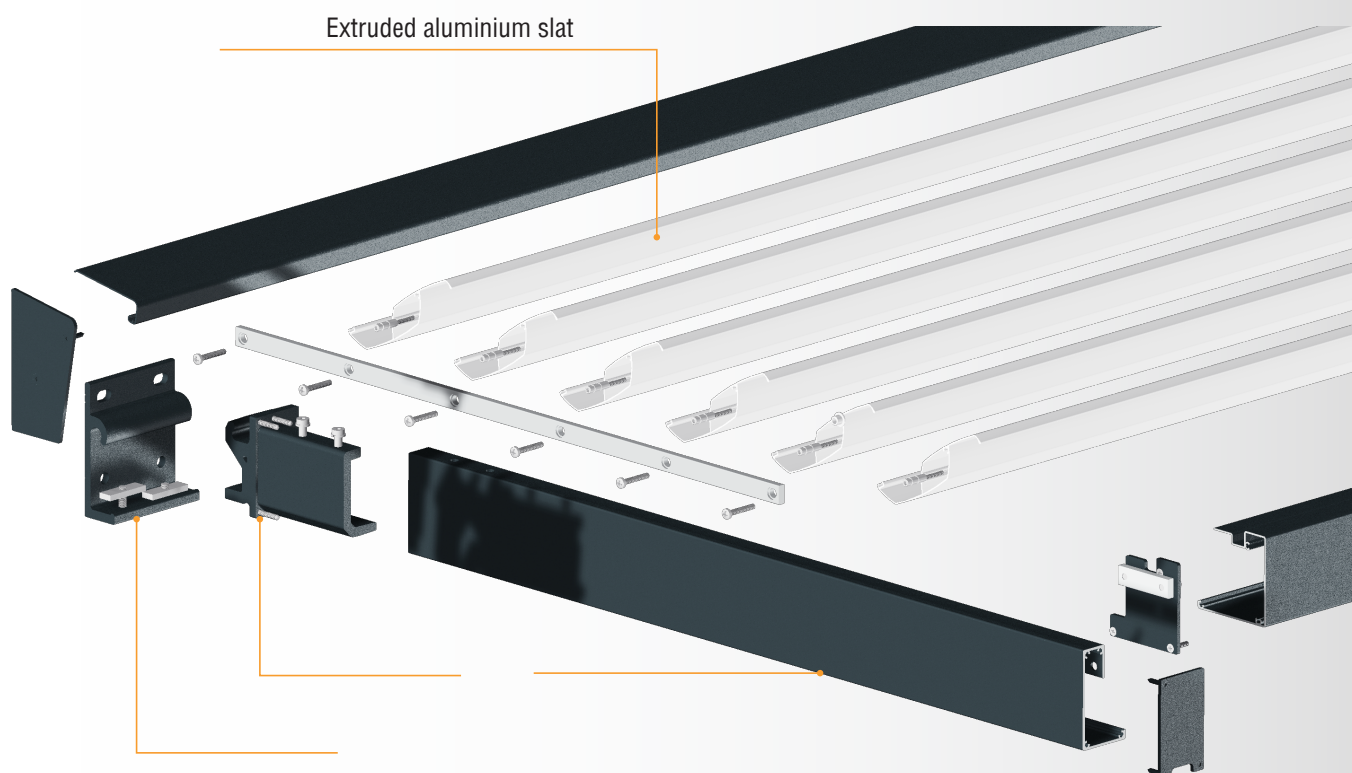
Advance : up to 1 m

Inclination : Fixed 0°

Slat orientation from 0 to 45°



Slat BSO MATHILDA
PBS063



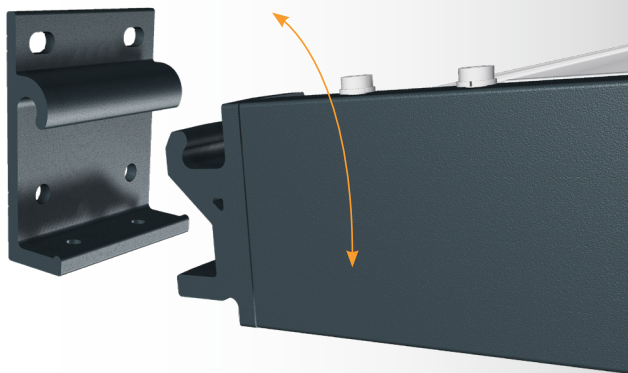
RAL 7016
ANTHRAHITE
Teflon coating



RAL 9010
High-gloss
lacquer finish

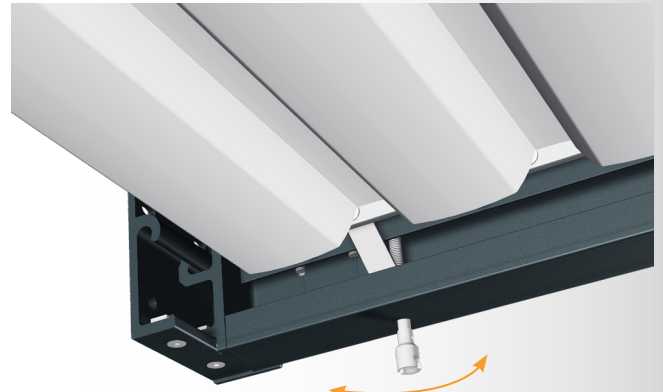
Simplified assembly

A cast iron piece is integrated into the end of the rafters, allowing direct engagement with the wall mounting plate. This system guarantees quick and accurate installation thanks to an intuitive locking mechanism, limiting complex handling.



Crank handle operation

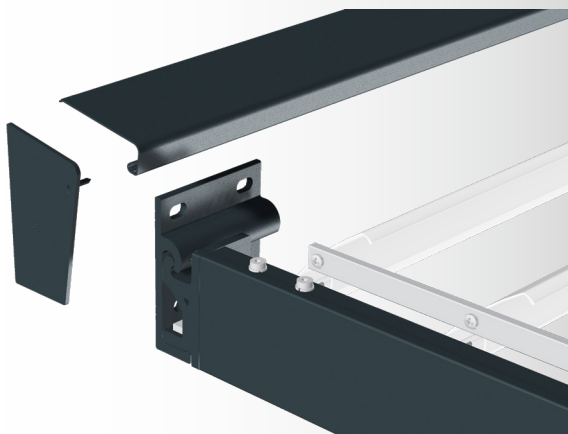
The crank handle is very easy to use. The gear box control is ergonomic and accessible, offering smooth adjustment of the slats from 0° to 45°. This adjustment allows you to adjust the light level as required.



Gear box operation

Finishing cover

The top cover provides protection against light to moderate rainfall, while adding a neat aesthetic to the overall design.



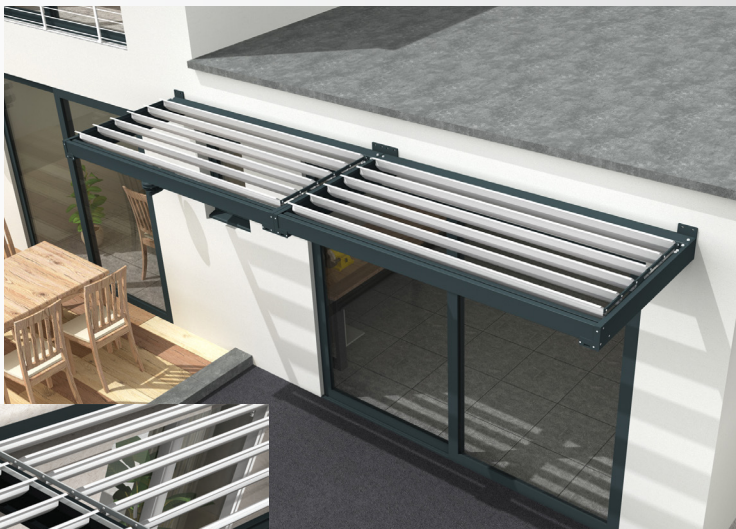
Sustainable materials

The structure is designed to withstand environmental conditions over time. Extruded aluminium (wall bracket and rail), aluminium sheet metal parts (brackets) and A2 stainless steel screws.

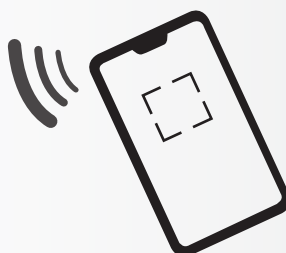


Modularity

The modular fastening system allows 2 m elements to be placed side by side, making it possible to cover large areas with remarkable installation flexibility. This configuration is ideal for meeting a variety of needs, from residential spaces to commercial applications.



**Find all our products available for download
on the dedicated page of our website.**



www.mitjavila.com