

PORT-COUL-MIX



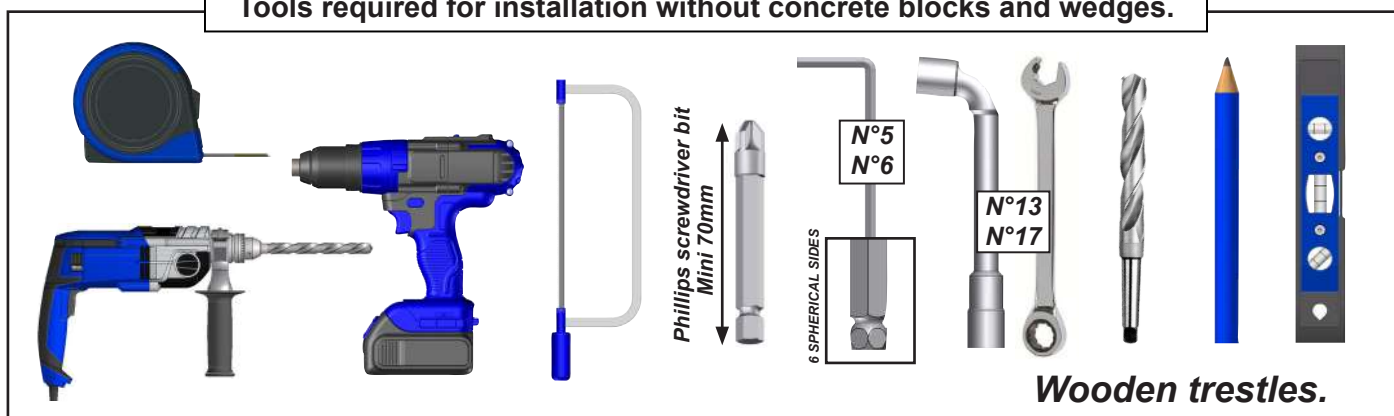
Installation instructions MIXED SLIDING GATE



Minimum 2 people
1 day

PREPARING FOR INSTALLATION

Tools required for installation without concrete blocks and wedges.



CAUTION



CAUTION! PLEASE READ THIS USER MANUAL BEFORE USING AND INSTALLING THE PRODUCT. KEEP THESE INSTRUCTIONS FOR FUTURE REFERENCE.

- Installing a gate must be done with care due to the constraints involved and requires a certain level of skill:

- Measuring and levelling the components.
- Drilling holes in the wall and ground, installing chemical anchors or suitable fasteners.
- Handling heavy loads.
- Electrical connection.

If you have any doubts about the correct procedure and safety of your installation, call in a professional.

- The gate must be installed in accordance with best practice. A minimum of two people are required, with personal protective equipment (PPE) and the appropriate tools. If you encounter any problems, please consult a qualified person familiar with this product for assistance.

- Follow the safety instructions to prevent damage caused by incorrect use! Observe all warnings in the instructions.
- This product presents a risk of falling and serious injury. All assembly steps must be followed carefully. Faulty fastening or incorrect installation may cause the gate to fall or break. It is important for personal safety to follow these instructions.
- It is strictly forbidden to hang from the gate structure.
- It is strictly forbidden to climb on the gate structure.
- It is the installer's responsibility to ensure that the gate is securely fastened and maintained.
- Do not install the gate in an area exposed to strong winds.
- The manufacturer accepts no responsibility for damage to the gate or its contents caused by natural disasters or specific events for any gates installed in breach of the recommendations in the installation instructions.



BEFORE STARTING INSTALLATION, Check the contents of the parcels received. If anything strikes you as odd or appears to be missing during this check, contact our technical department as soon as possible (do not assemble the gate if any parts are defective).

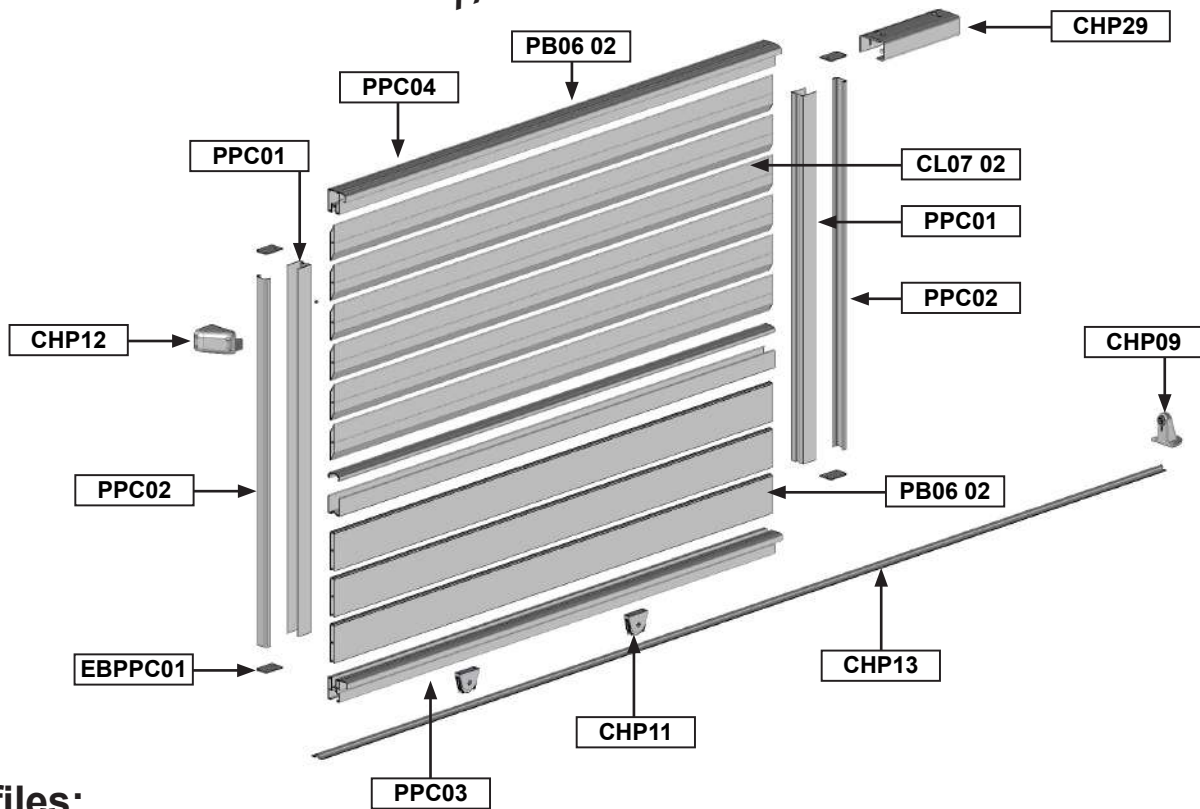
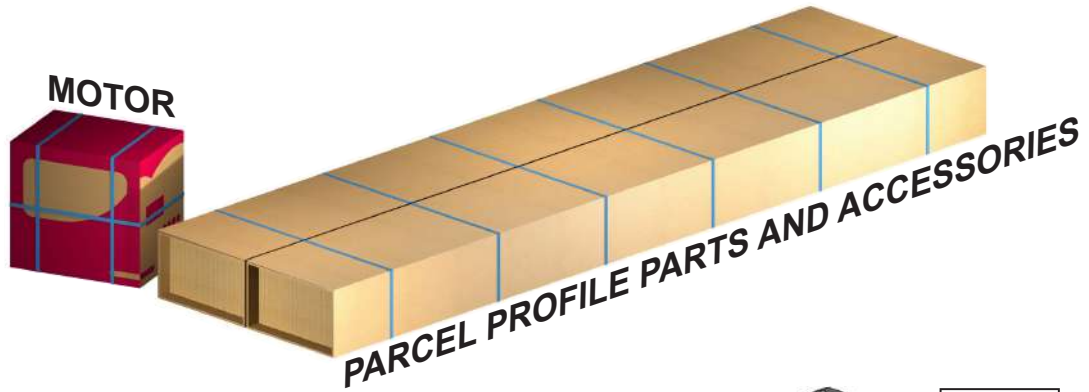
Check that your wall and floor are level. In the case of a hollow or curved wall or floor, use solid wedges to ensure that the elements to be installed are correctly aligned.
Must be installed on concrete slab.

Recommendation: We recommend lubricating stainless steel screws before assembly to prevent seizing due to the fasteners overheating when screwed in too quickly. We also recommend screwing in gradually, back and forth, using moderate torque.

THE COMBINED SLIDING GATE



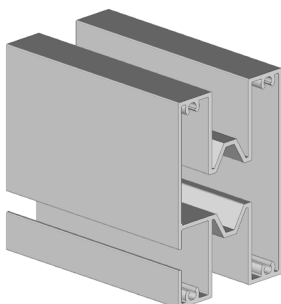
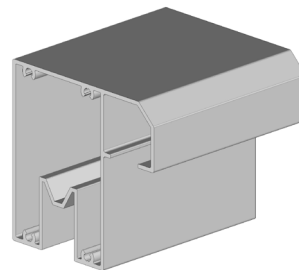
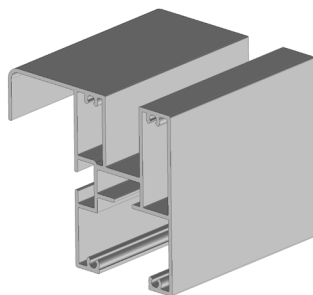
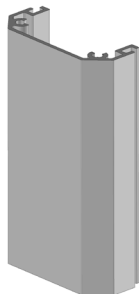
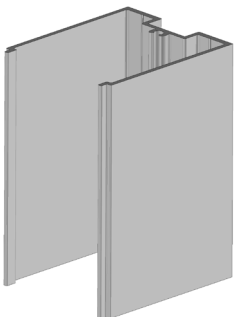
Unpack the parcels you have received. Be careful not to scratch them; do not use a CUTTER.



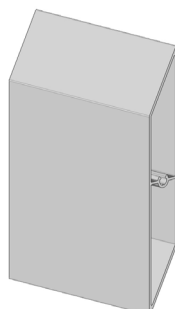
Profiles:

PPC01 : Nb 2
Profil Montant

PPC02 : Nb 2
Profil Finition Montant



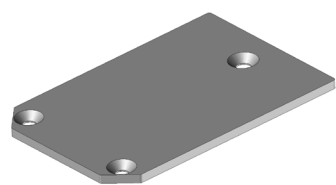
PPC06 :
Crossbar Profile
Nb 1



CL07 02:
Filling profile
Height 2062 mm = 9
Height 1906 mm = 8
Height 1750 mm = 7
Height 1594 mm = 6

Height 1993 mm = No. 3
Height 1843 mm = No. 3
Height 1692 mm = No. 3
Height 1542 mm = No. 3

Parts and screws:



EBPPC 01 :
Nb 4



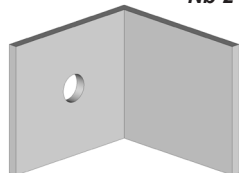
PLE06 :
Nb CREM1MP x 6 + 4



DIN125M6 :
Nb CREM1MP x 6



DIN912M6x18 :
Nb CREM1MP x 6



EQ50x50 03 :
Nb 2



DIN7504K-ST4.8x16
: Nb 2



DIN912M6x30 :
Nb 4



DIN7982ST4.2x50 :
Nb (CL0702 + PB0602) x 2



DIN7981ST4.2x50 :
Nb (PPC03 + PPC04 + PPC06) x 4

Accessories :

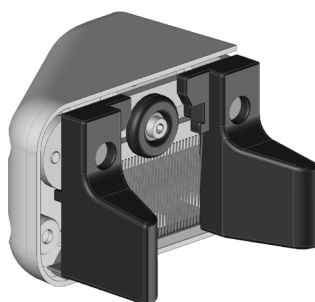
CHP11 : Nb 2



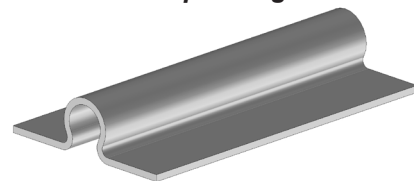
CHP09 : Nb 1



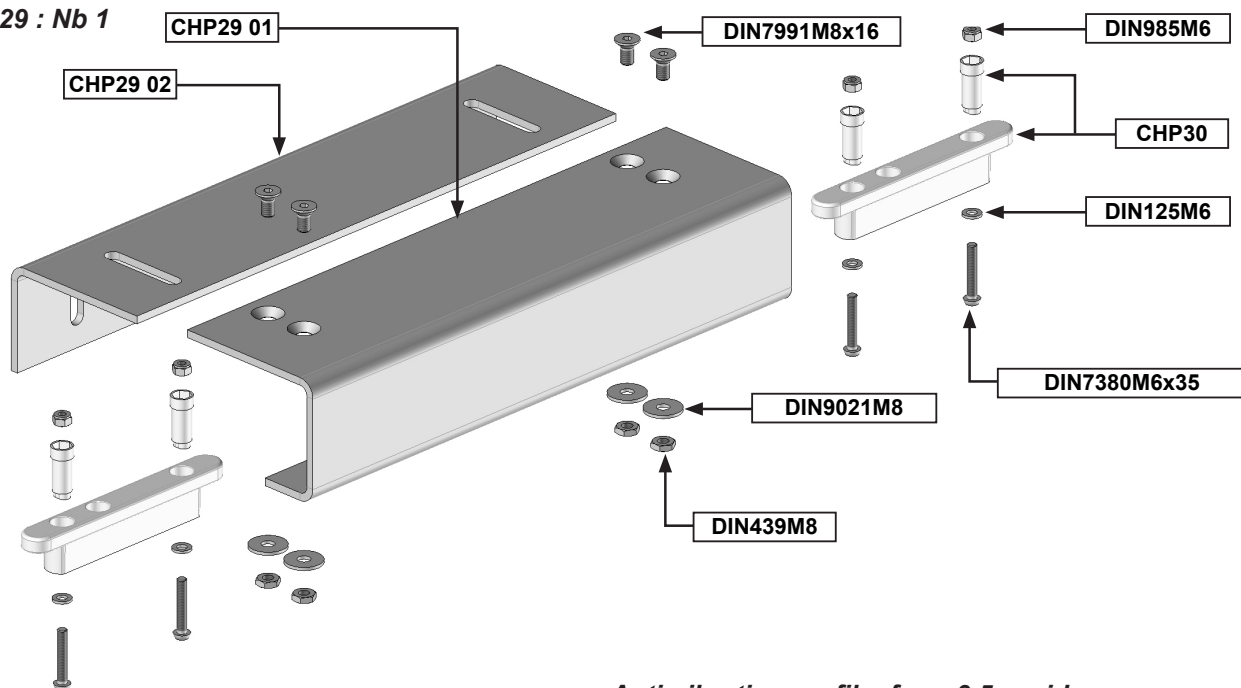
CHP12 : Nb 1



CHP13 : Nb Depending on width

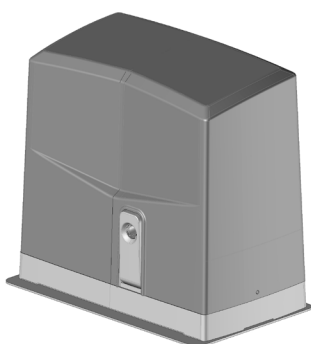


CHP29 : Nb 1



Motor:

KIT SLIDEGATE : Nb 1



Anti-vibration profile: from 3.5m wide.

VB05 : 1



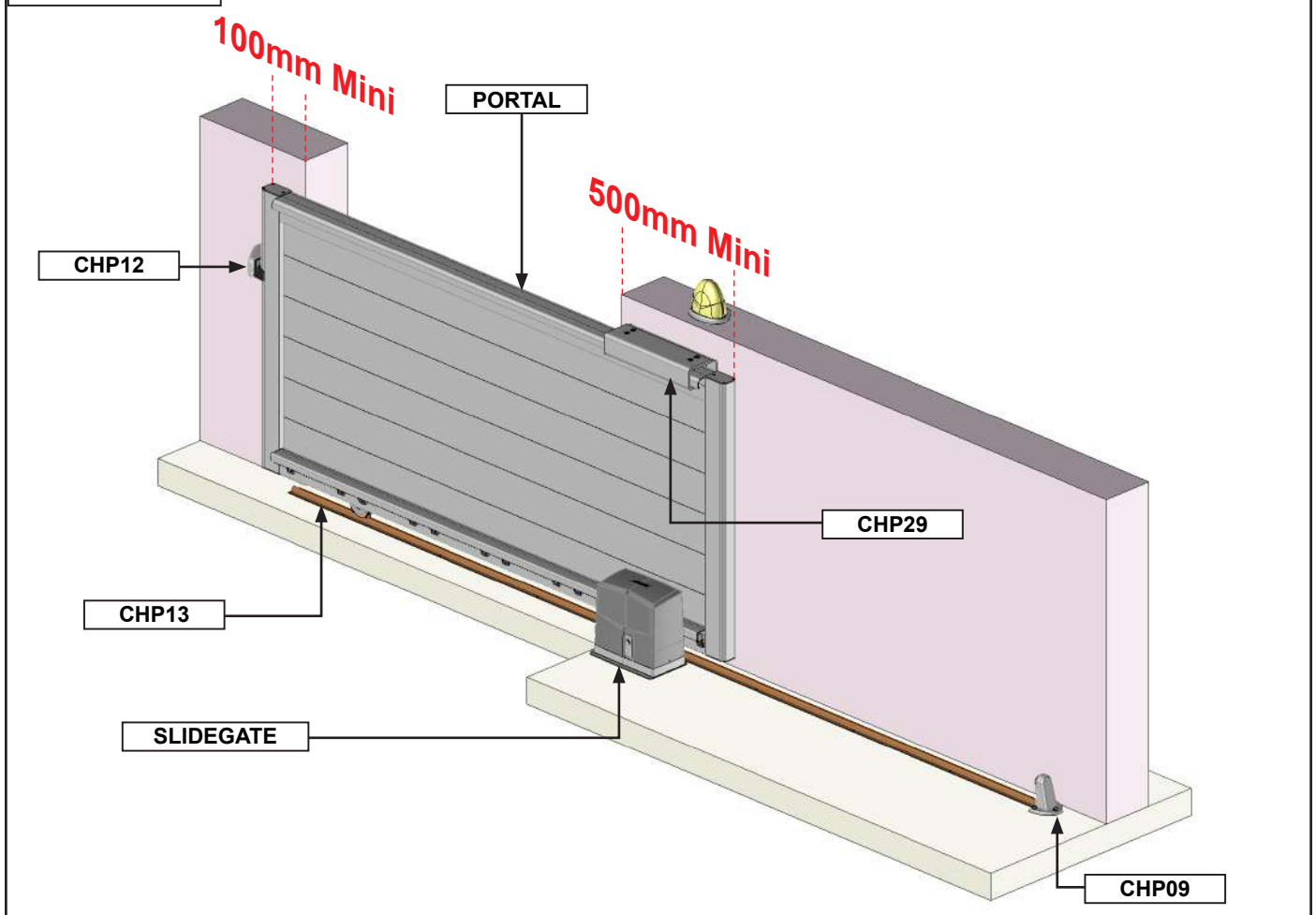
VB04 : 1



DIN7504K-ST4.8x16 :
Nb CL07 02



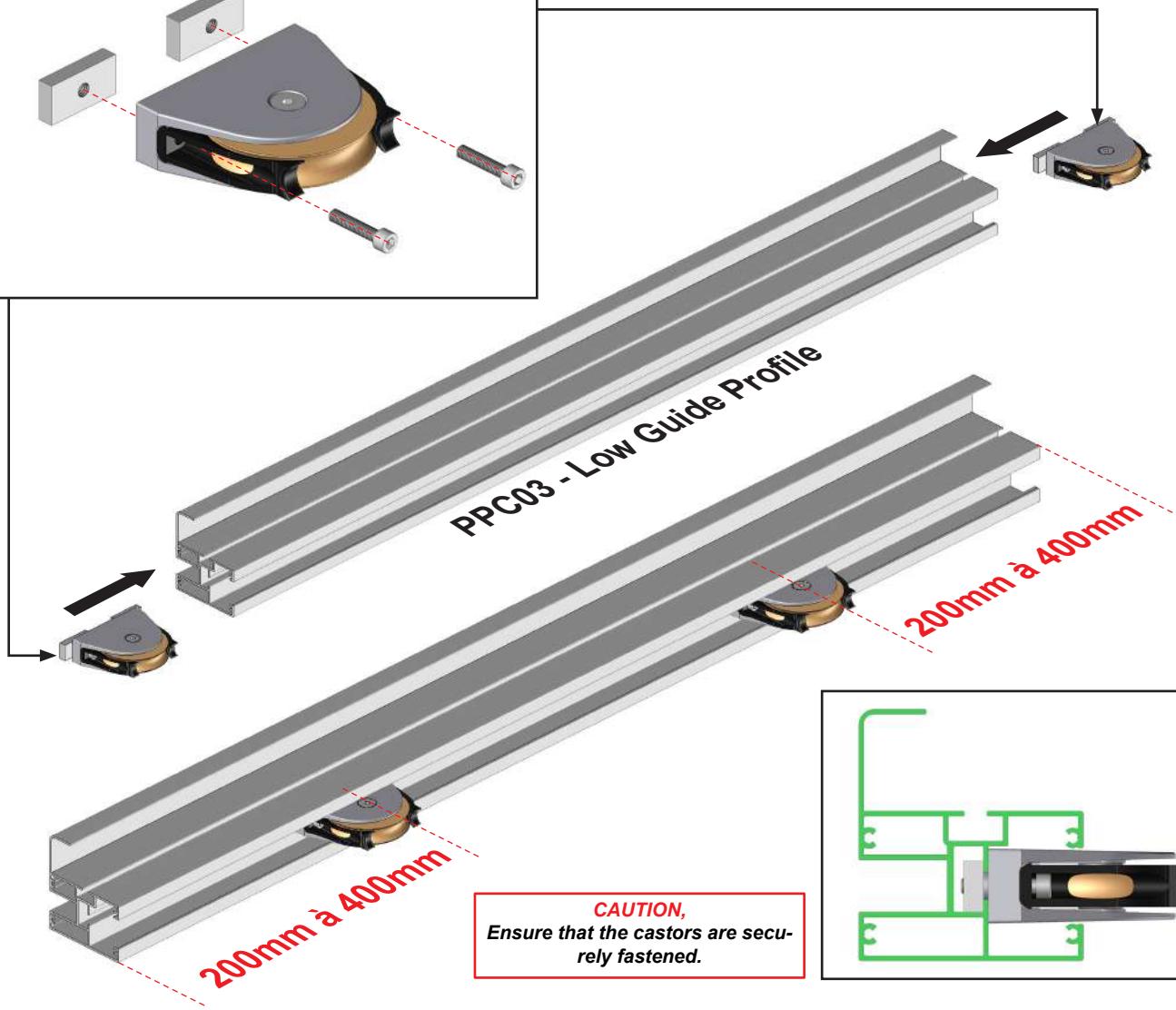
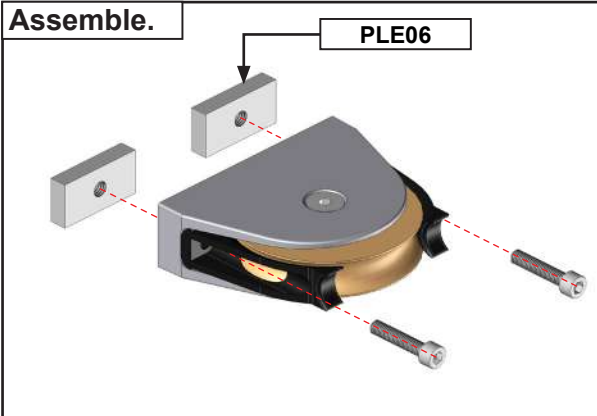
Situation.



Summary :

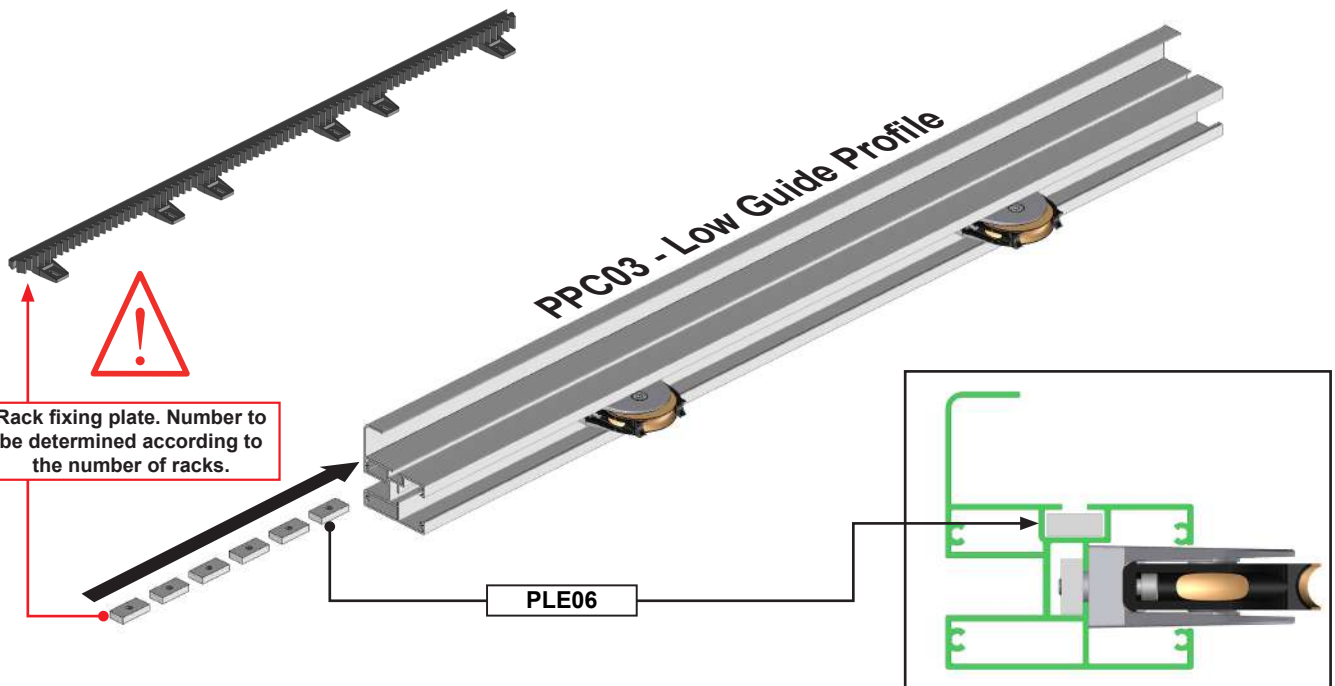
1 - Preparing the low guide profile.....	Page 5
2 - Pre-assemble the rack plates.....	Page 5
3 - Assembling the lower frame	Page 6
4 - Assembling the PB06 02 infill	Page 7
5 - Assembling the PPC06 crossbar profile.....	Page 8
6 - Assembling the CL07 02 infill	Page 9
7 - Assembling the PPC04 high guide profile.....	Page 10
8 - Slide on the PPC02 upper finishing profiles.....	Page 10
9 - Assembling the end caps.....	Page 11
10 - Assembling the rack.....	Page 11
11 - Installing the rail.....	Page 13
12 - Installing the gate on the rail and levelling it.....	Page 14
13 - Assembling the guide piece.....	Page 14
14 - Installing the guide piece.....	Page 15
15 - Installing the guide piece (continued).....	Page 16
16 - Installing the motor.....	Page 17
17 - Securing the motor.....	Page 18
18 - Checking the movement.....	Page 19
19 - Installing the opening stop.....	Page 19
20 - Installing the closing strike plate.....	Page 20
21 - Installing the motor mechanical stops.....	Page 21
22 - Preparing the motorisation.....	Page 22
23 - Connection and programming.....	Page 22
24 - Vibration part option.....	Page 22

1 Preparation of the PPC03 low guide profile.



CAUTION,
Ensure that the castors are securely fastened.

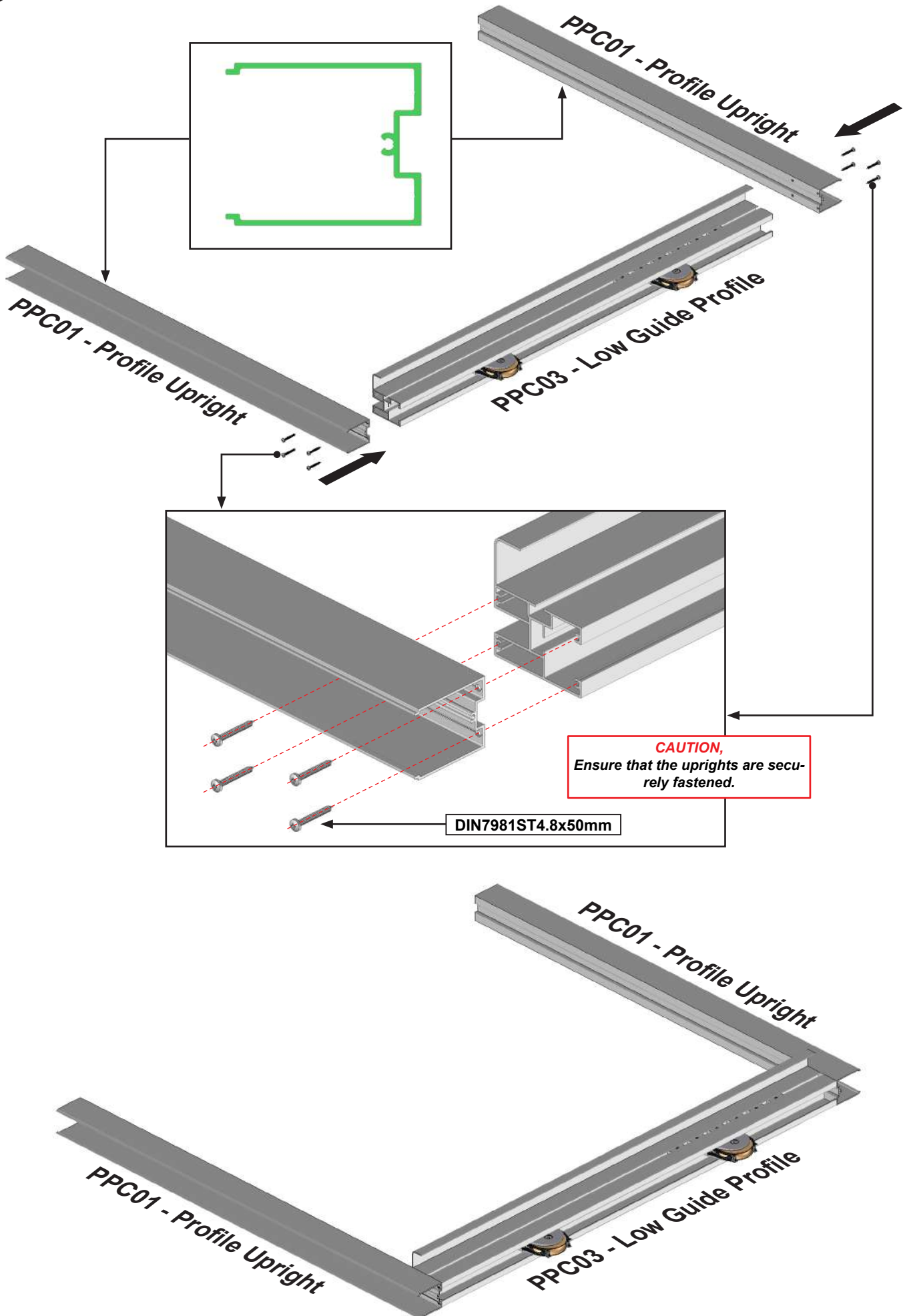
2 Pre-assemble the rack plates.



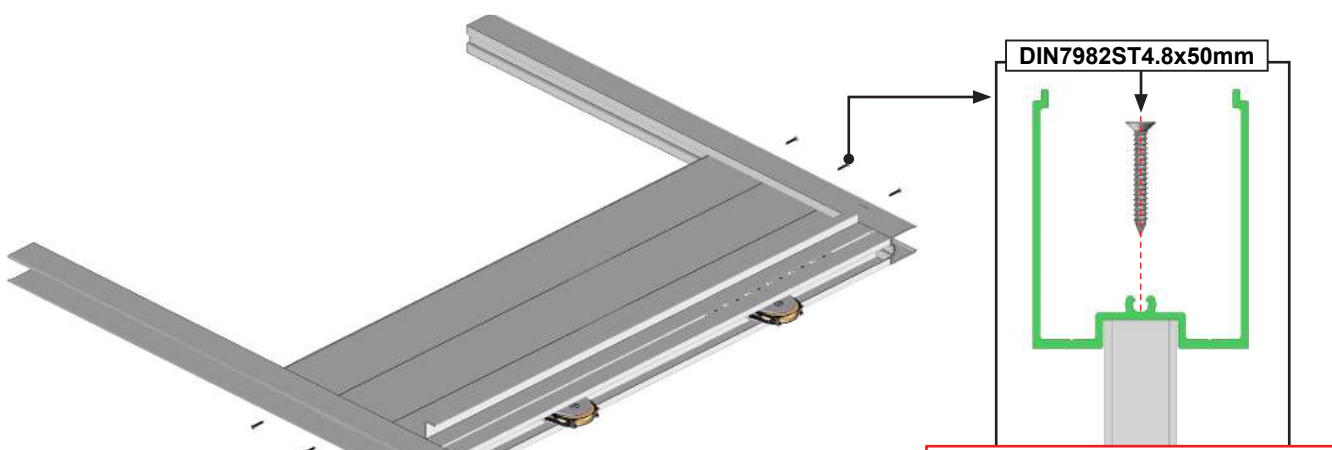
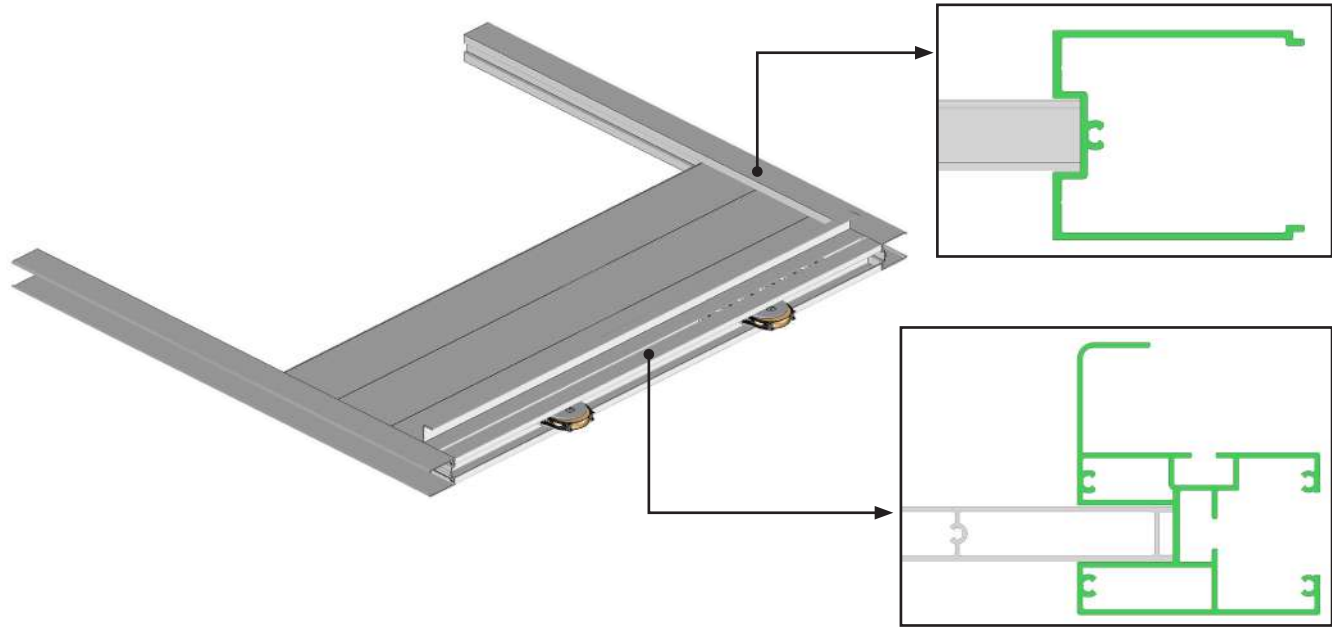
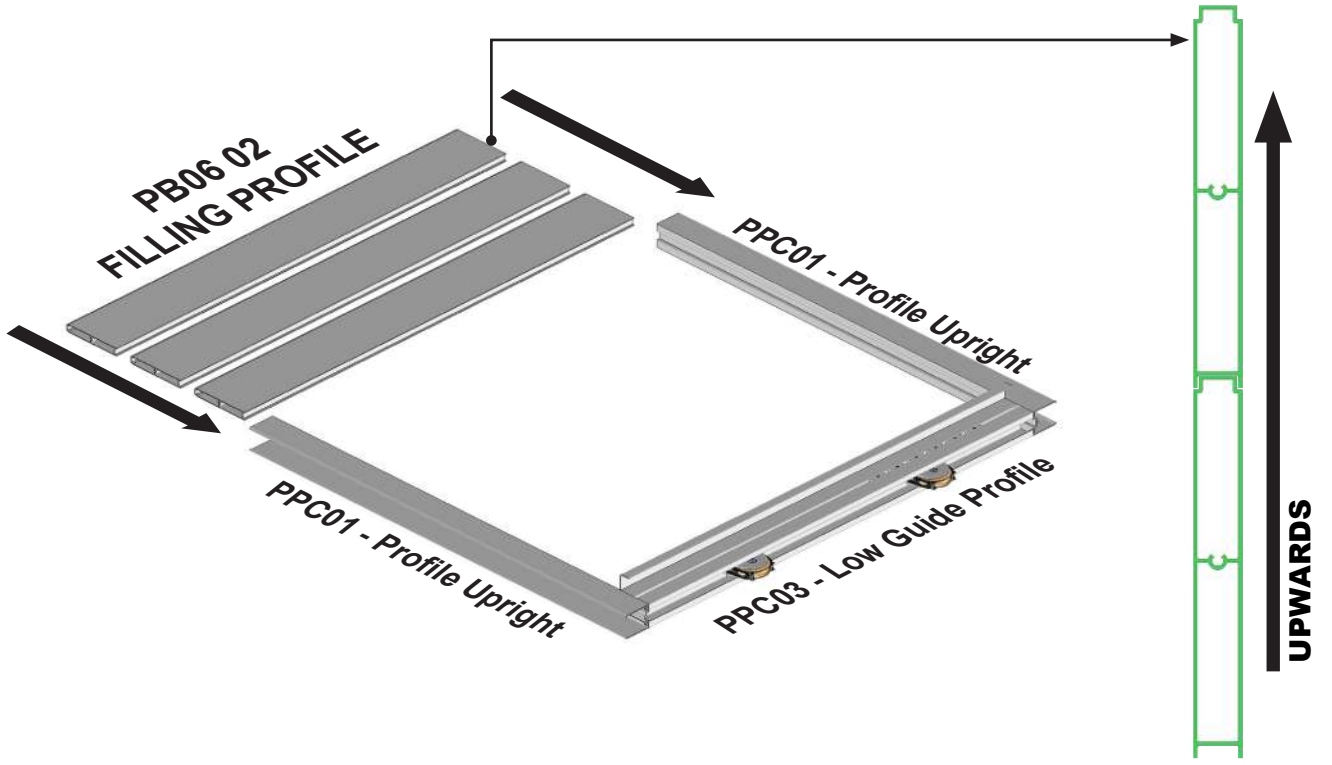
Rack fixing plate. Number to be determined according to the number of racks.

PLE06

3 Assembling the lower frame.

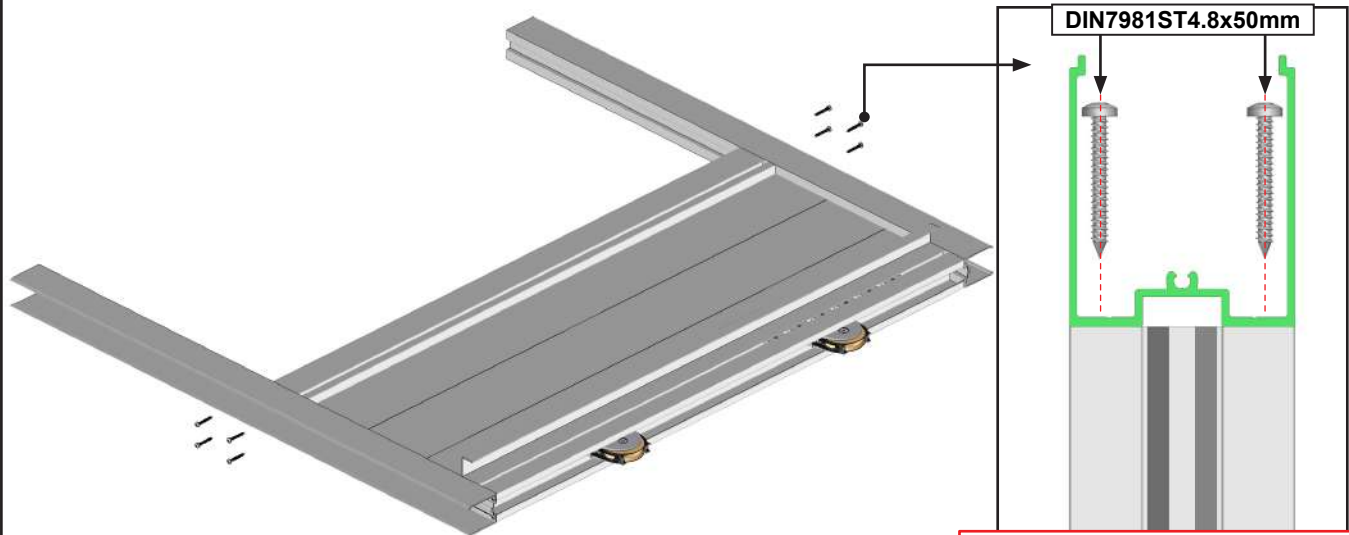
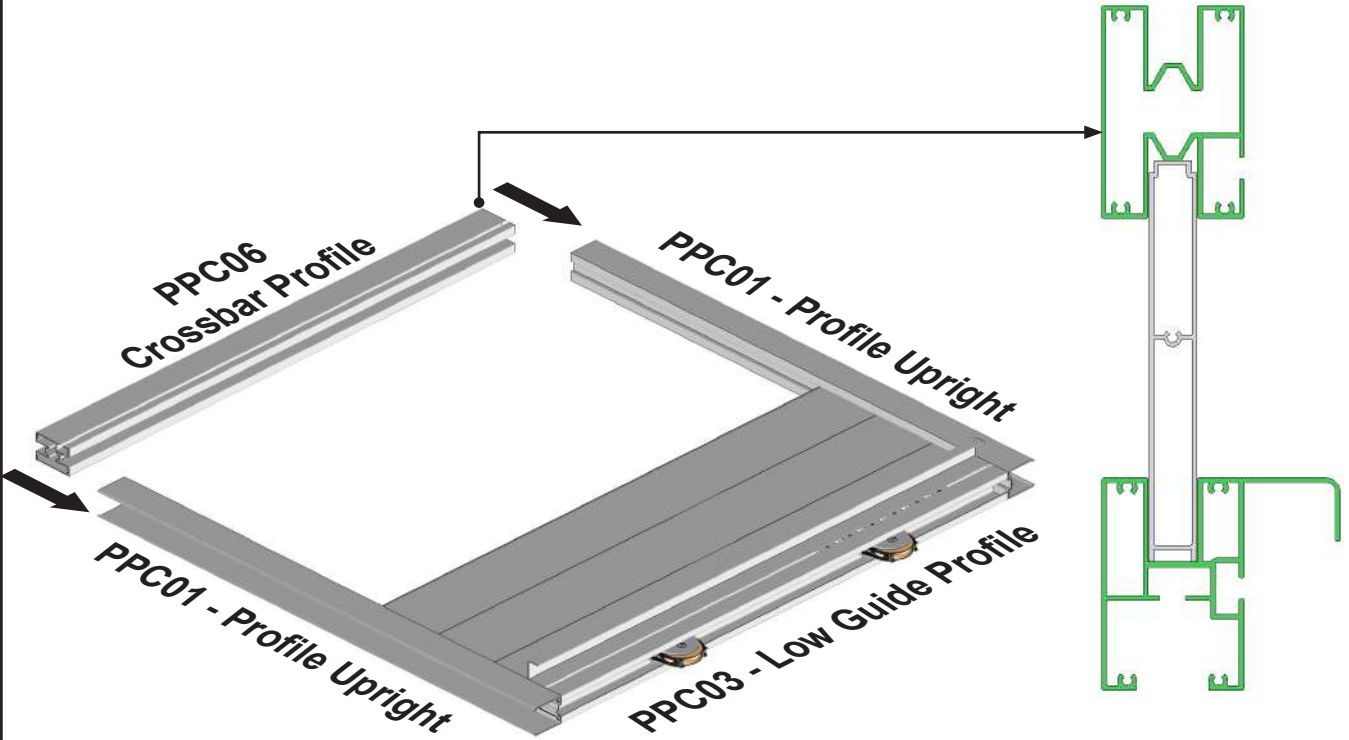


4 Assembly of PB06 02 filling.



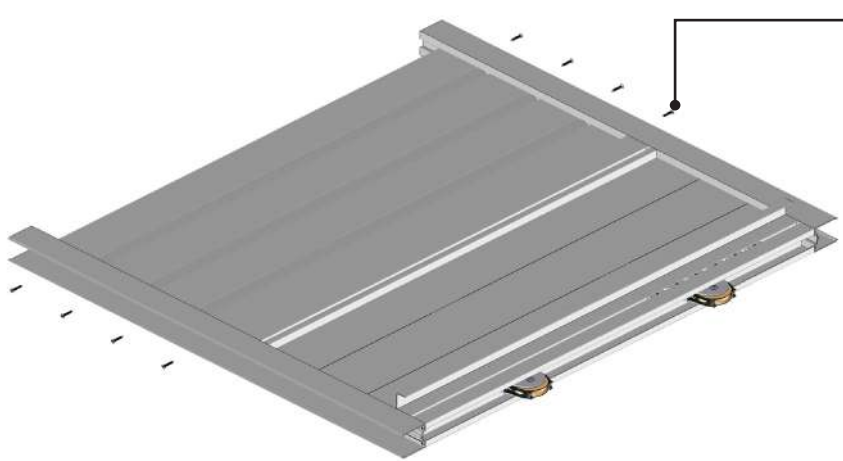
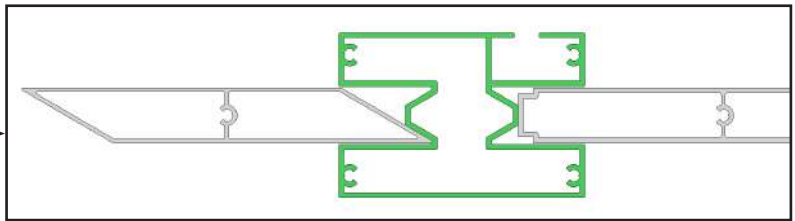
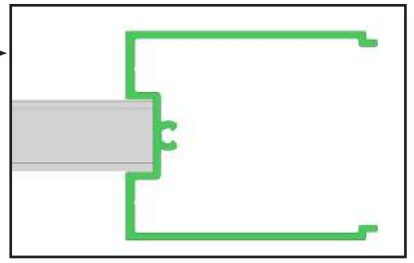
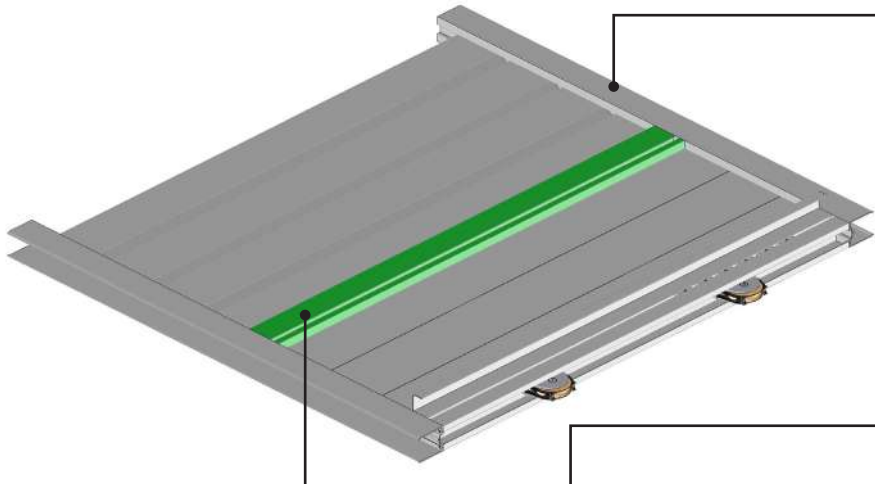
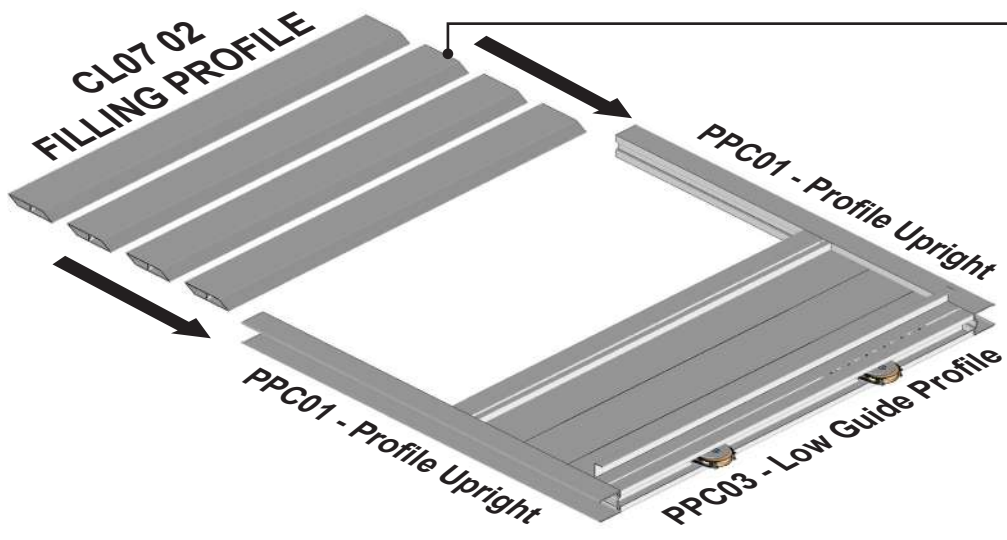
CAUTION,
Ensure that the infill is securely fastened to the uprights. One screw on each side per filling profile.

5 Assembly of the PPC06 crossbar profile.



CAUTION,
Ensure that the infill is securely fastened to the uprights. Four screws on each side of the crossbar profile.

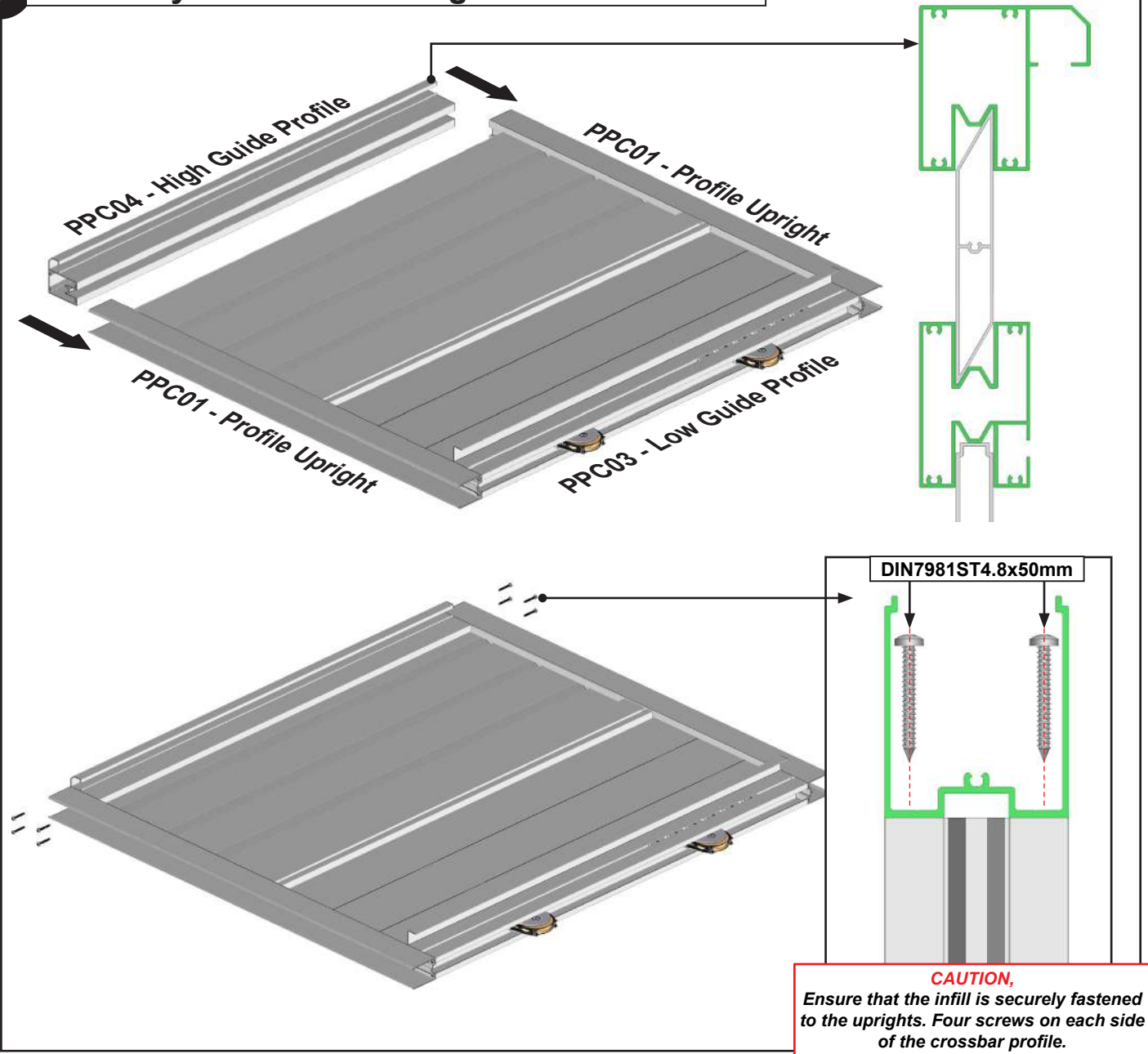
6 Assembly of the CL07 02 filling.



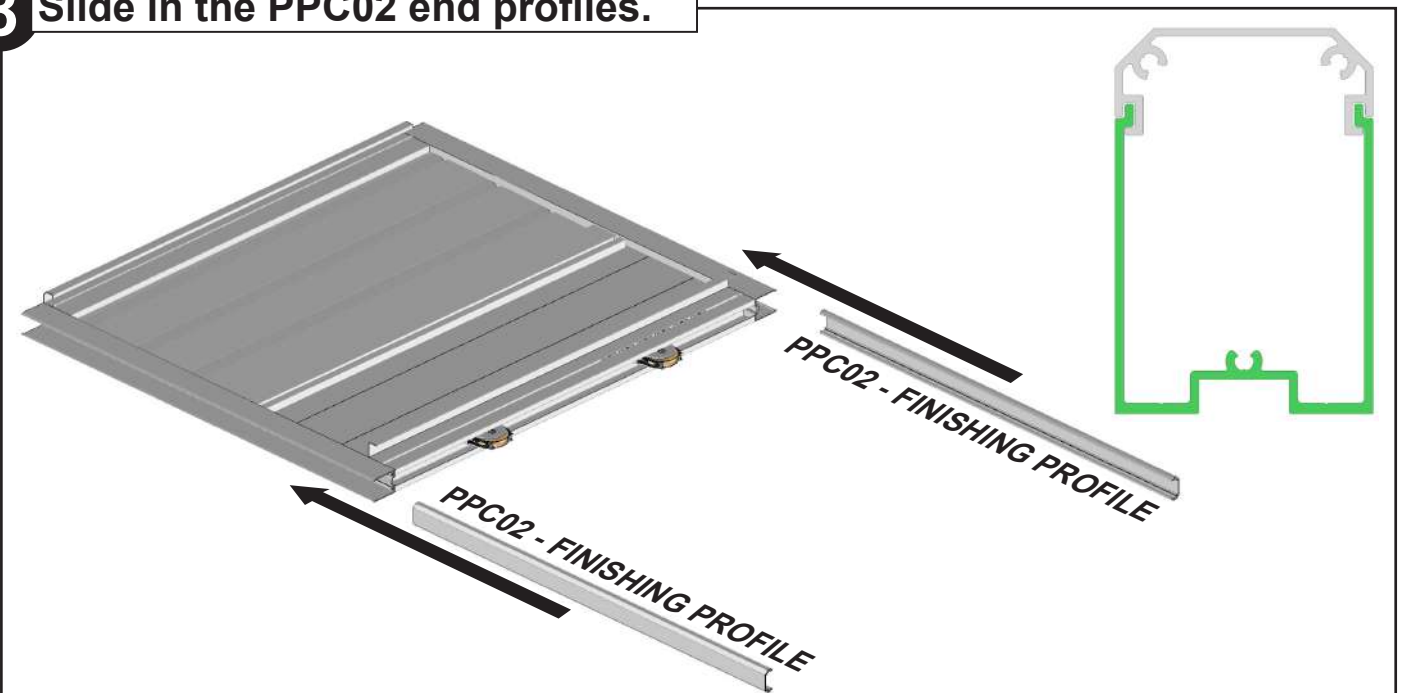
DIN7982ST4.8x50mm

CAUTION,
Ensure that the infill is securely fastened to the uprights. One screw on each side per filling profile.

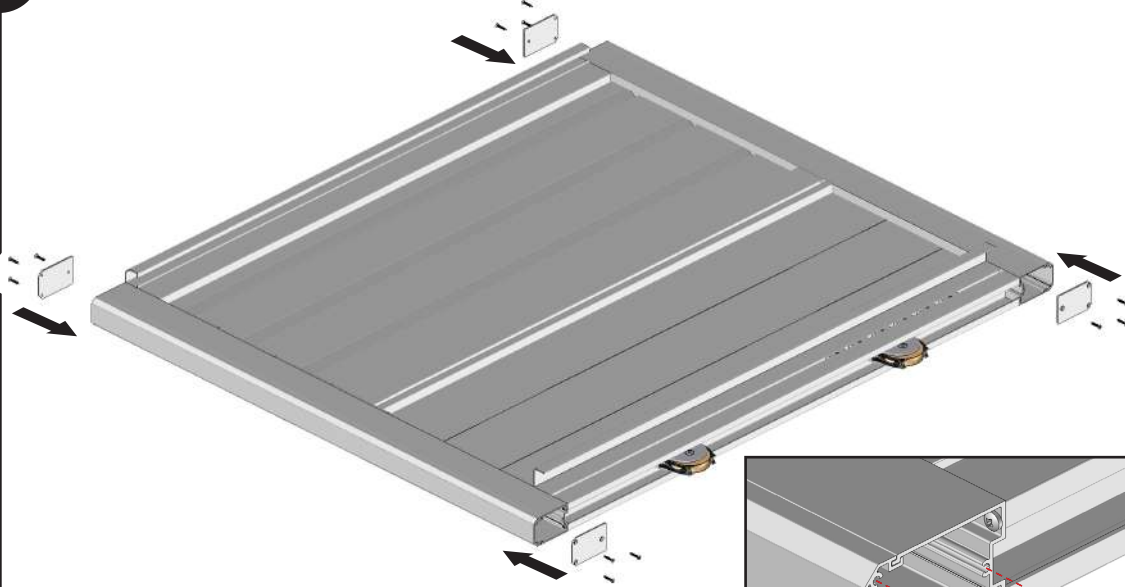
7 Assembly of the PPC04 High Guide Profile.



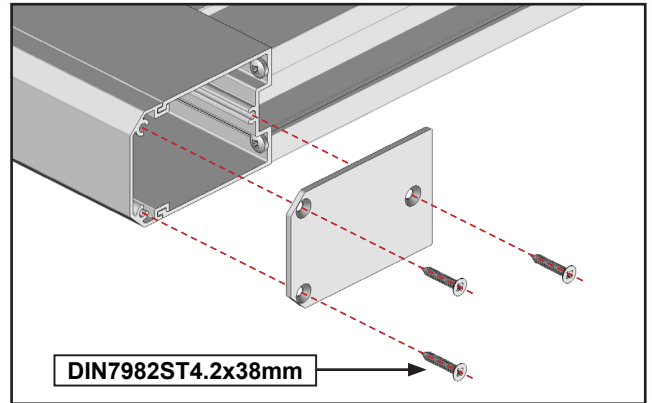
8 Slide in the PPC02 end profiles.



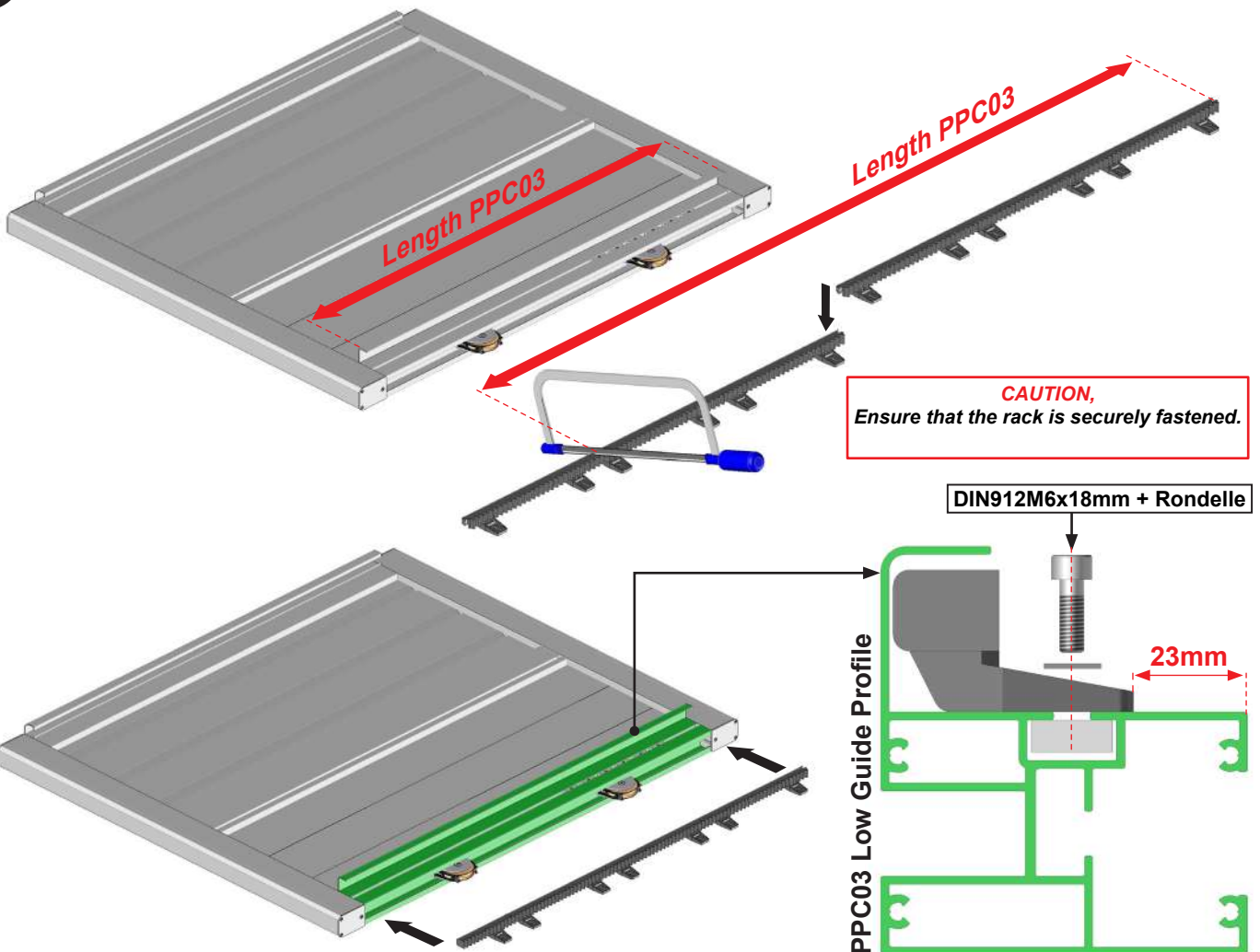
9 Assembling the caps.



IMPORTANT,
For gates wider than 3.5 m, refer to paragraph 24
on page 22. Continue with the assembly descri-
bed in the paragraph below.

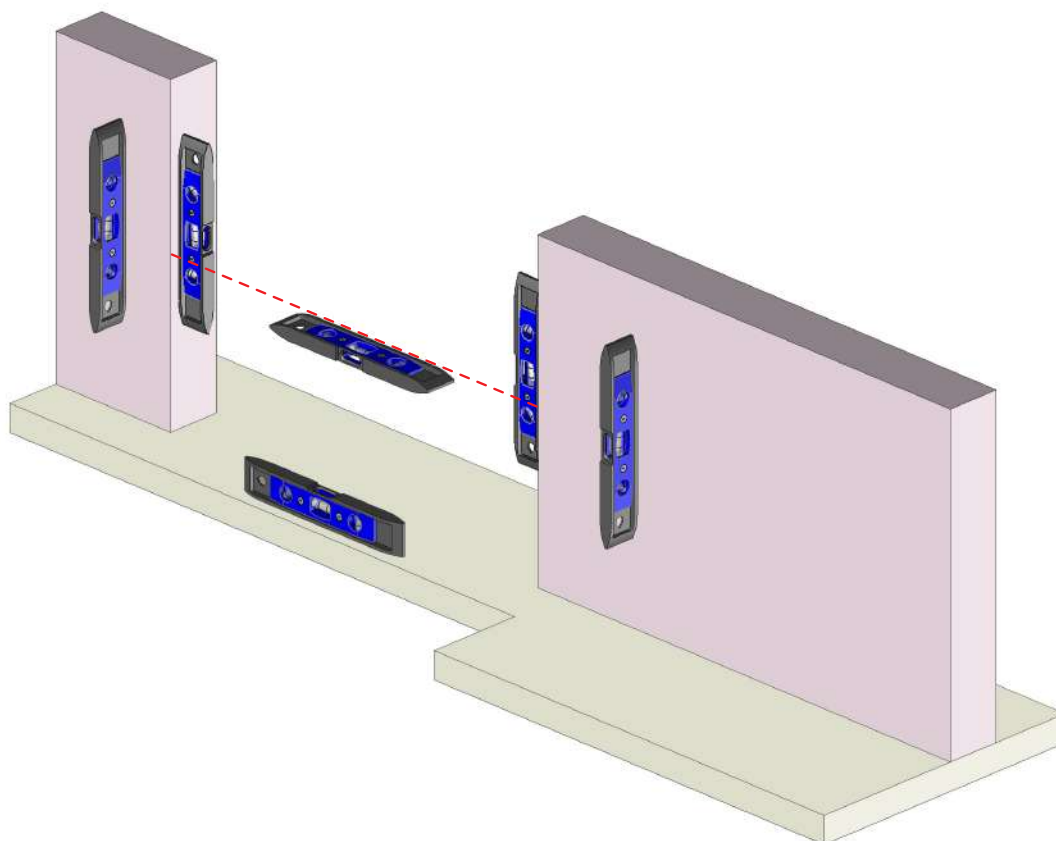


10 Assembling the rack.



INSTALLATION OF THE GATE

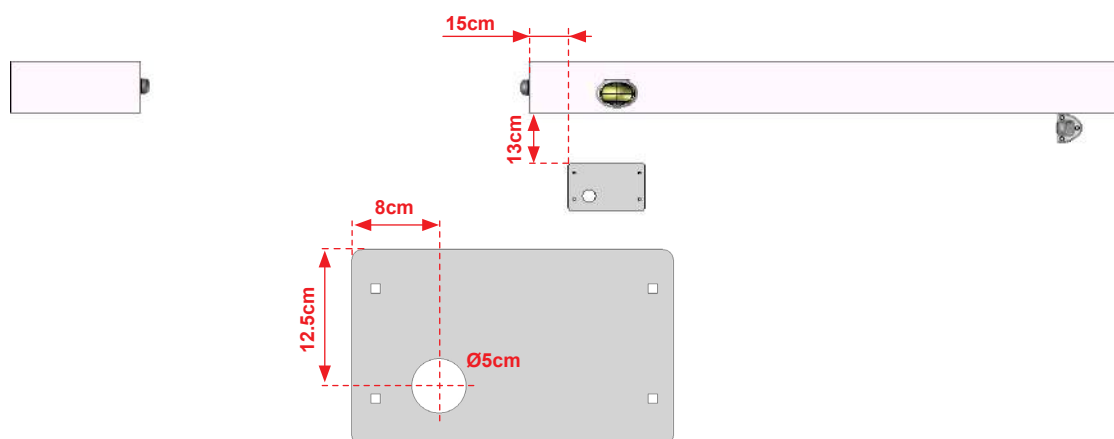
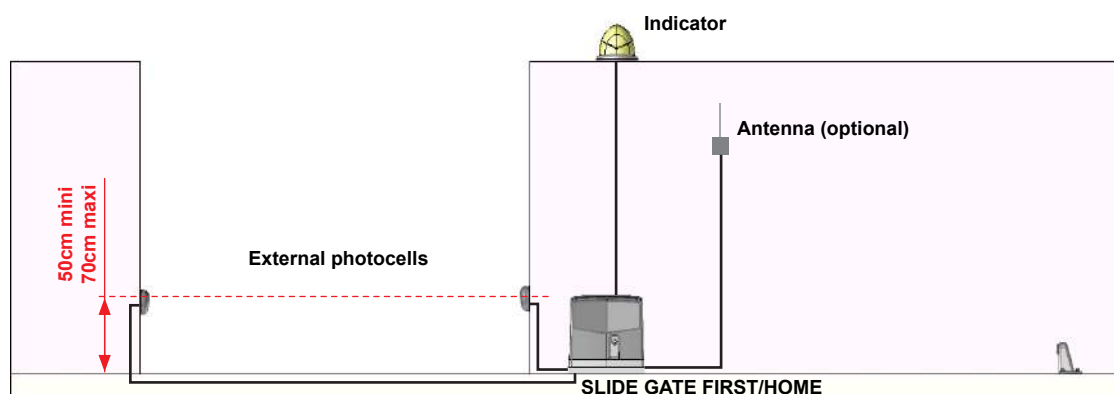
Check the level and flatness of the walls and floor. In the event of poor levels or unevenness, carry out the necessary operations to readjust the whole structure.



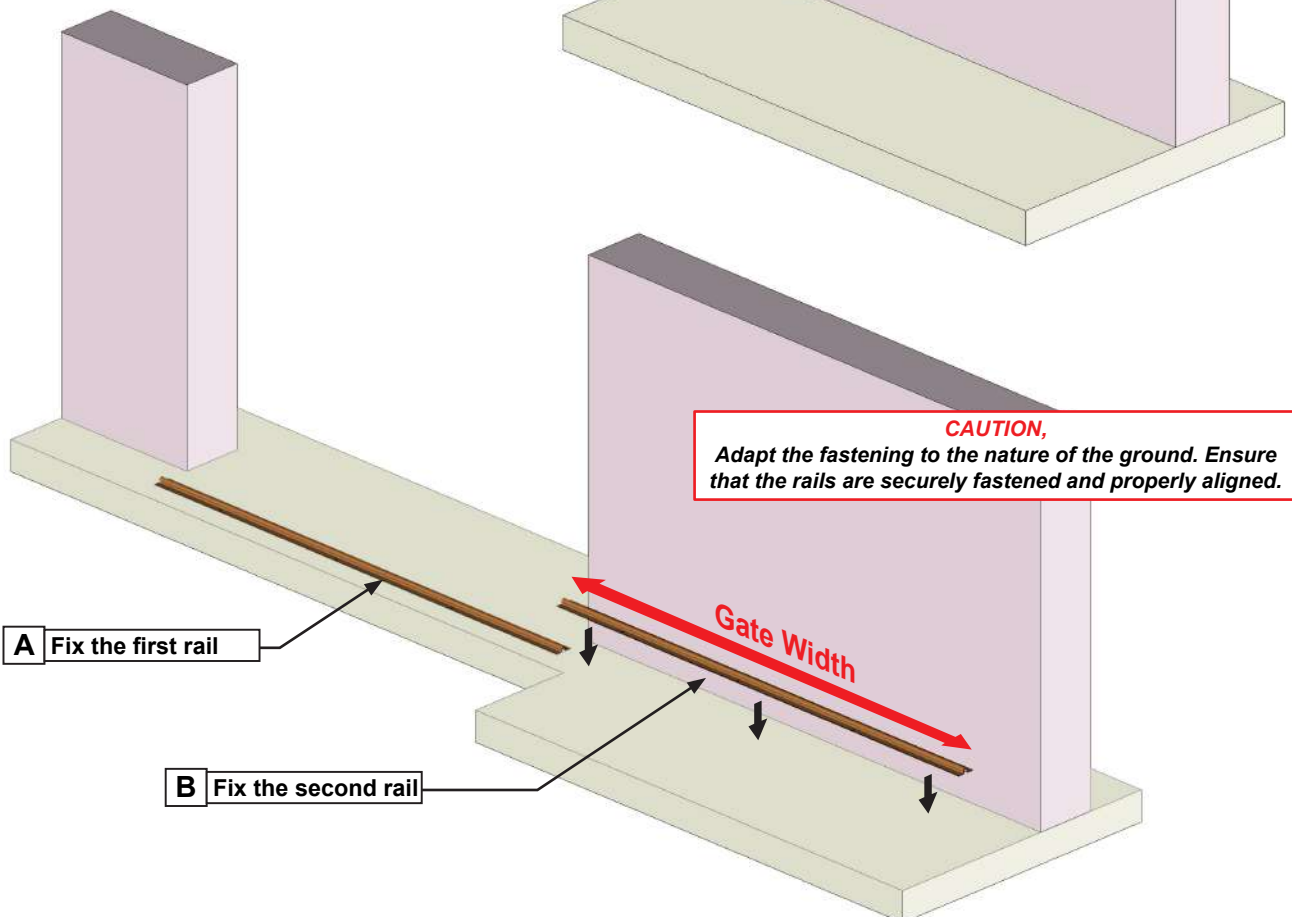
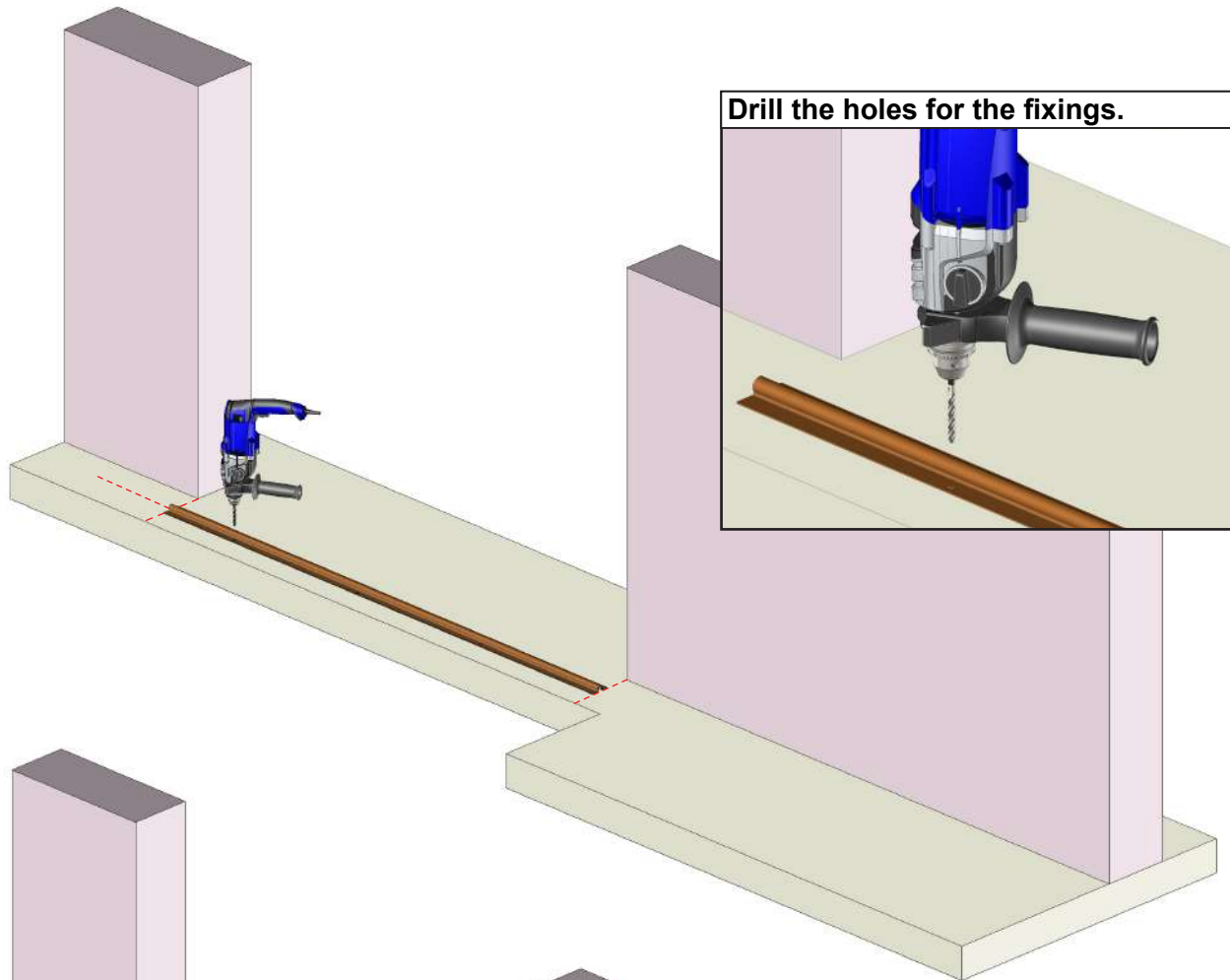
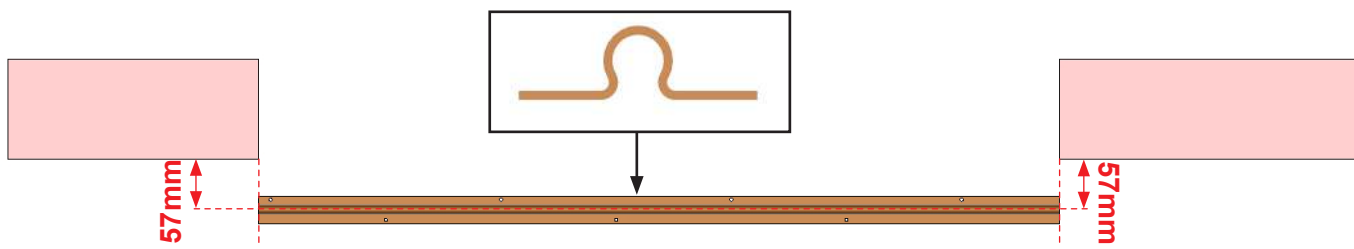
Situation of the electrical system:

Ensure that the components are correctly positioned to avoid any collisions.

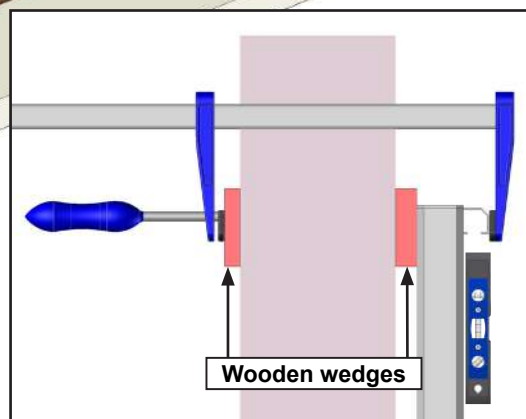
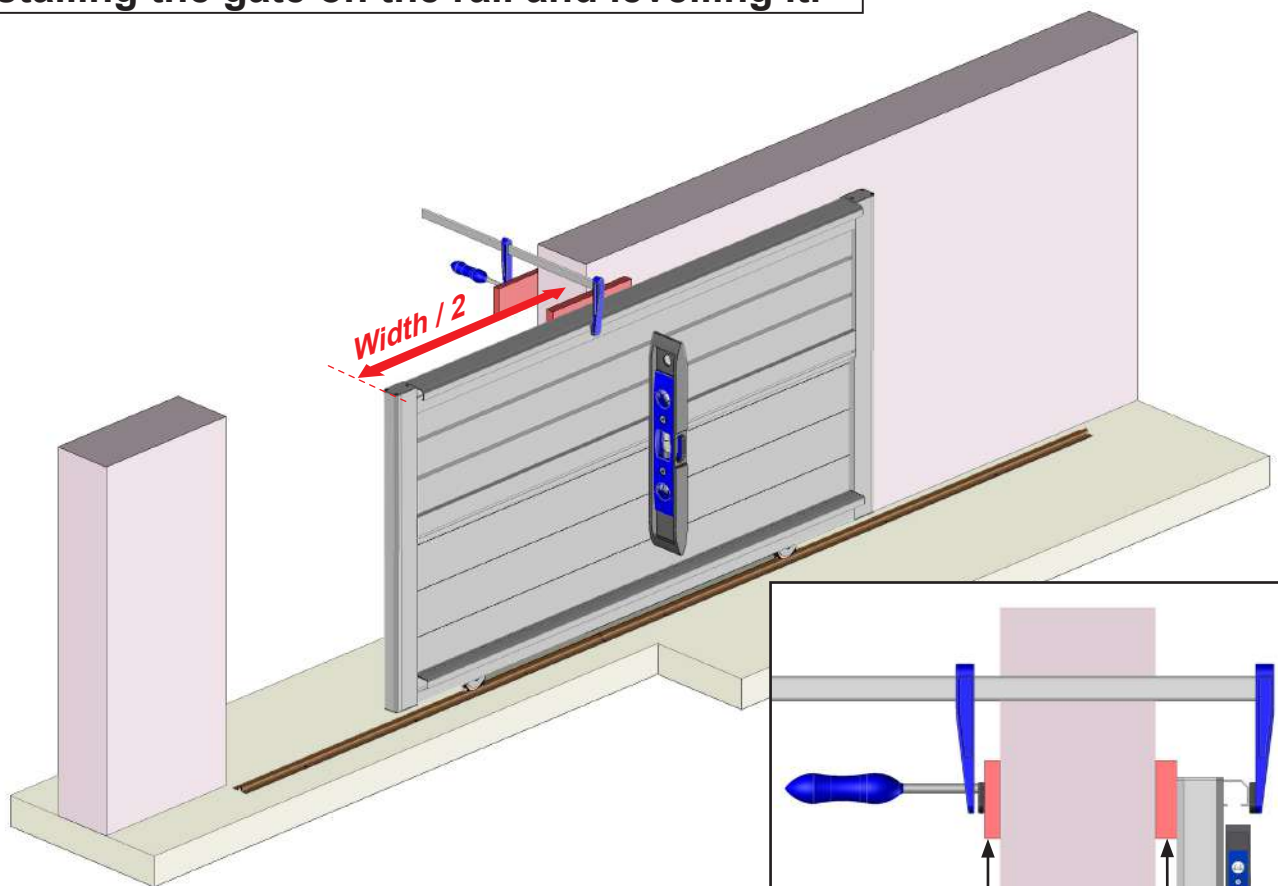
SLIDE GATE PRO motor: please refer to the motor manual.



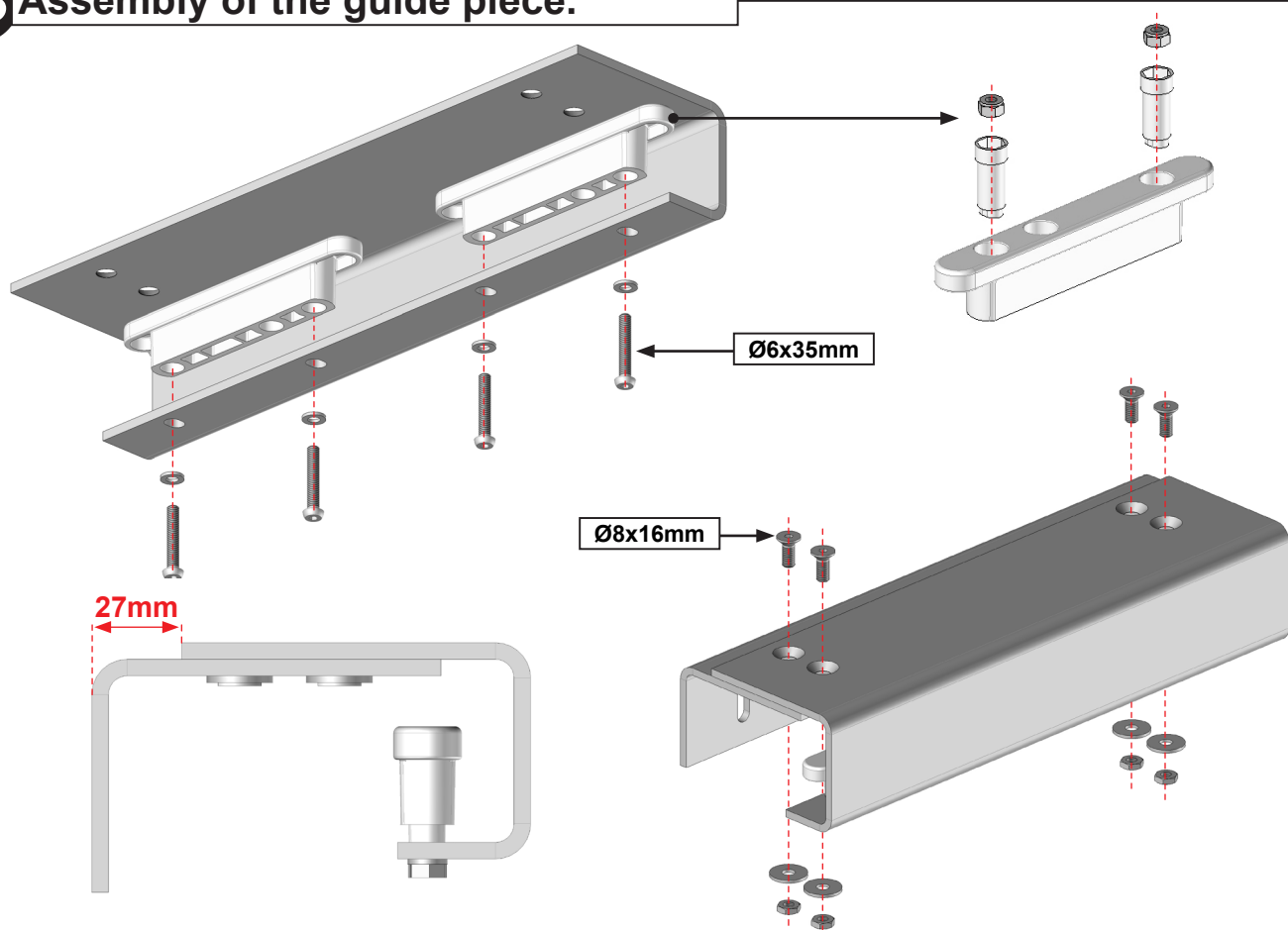
11 Installation of the rail.



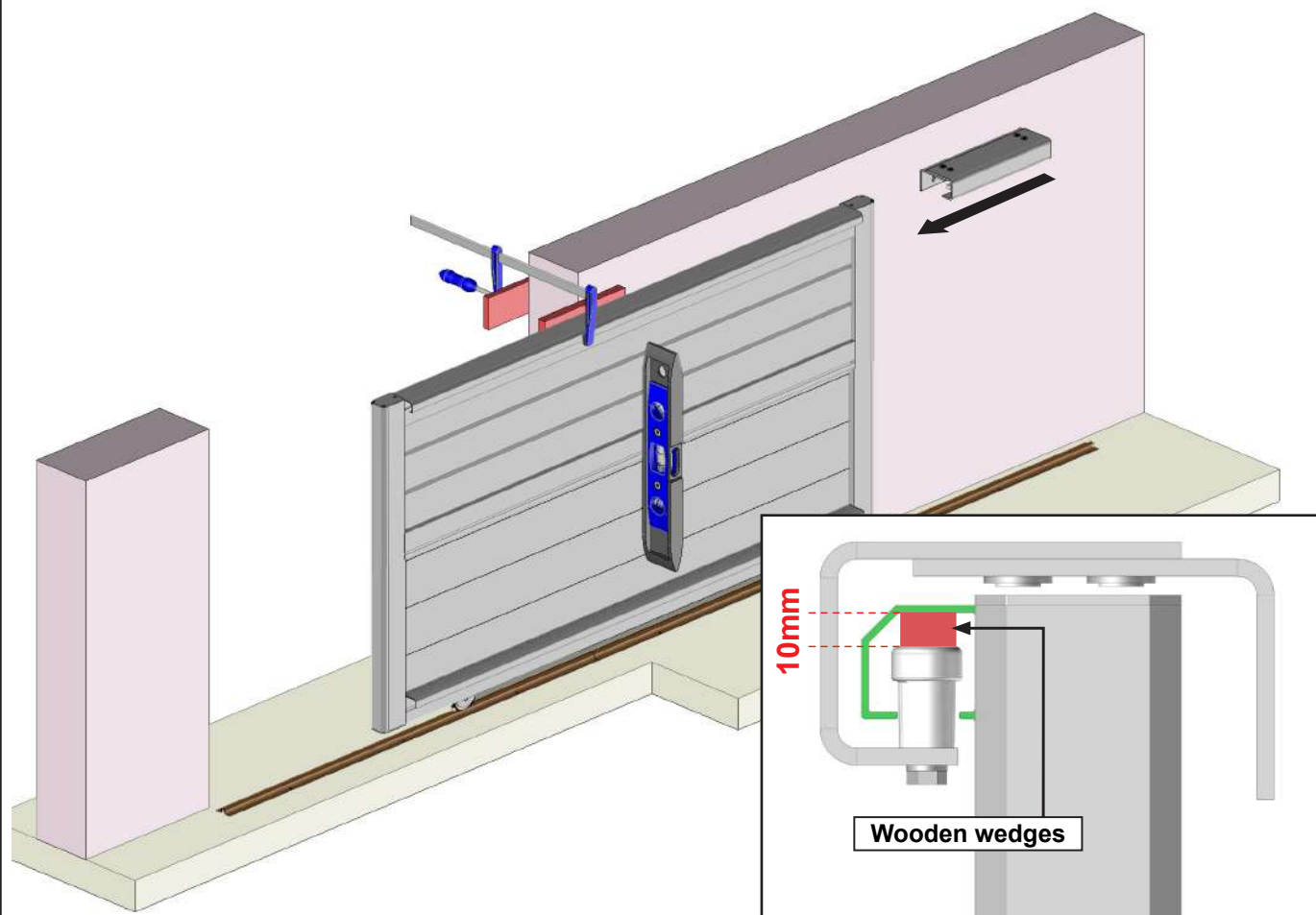
12 Installing the gate on the rail and levelling it.



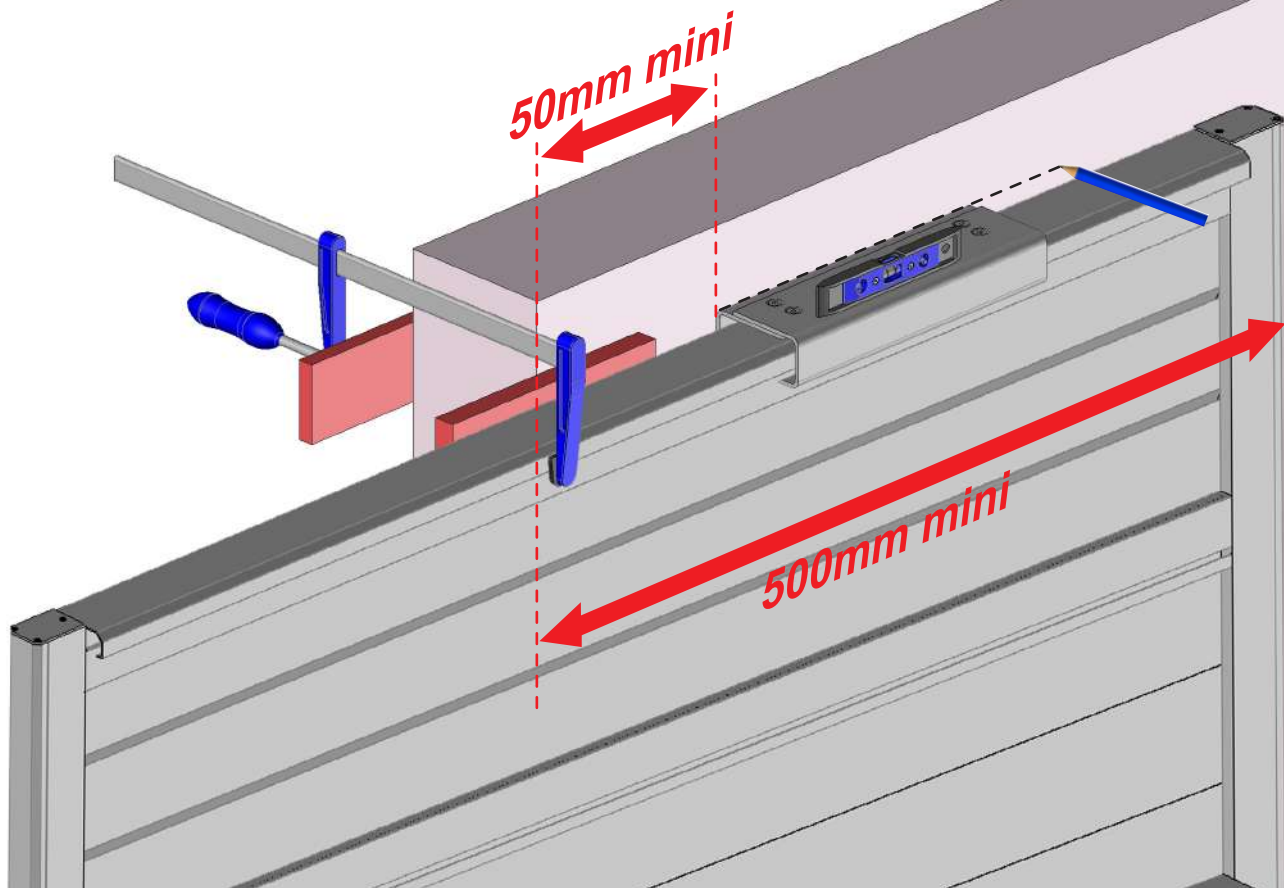
13 Assembly of the guide piece.



14 Pose de la pièce de guidage.



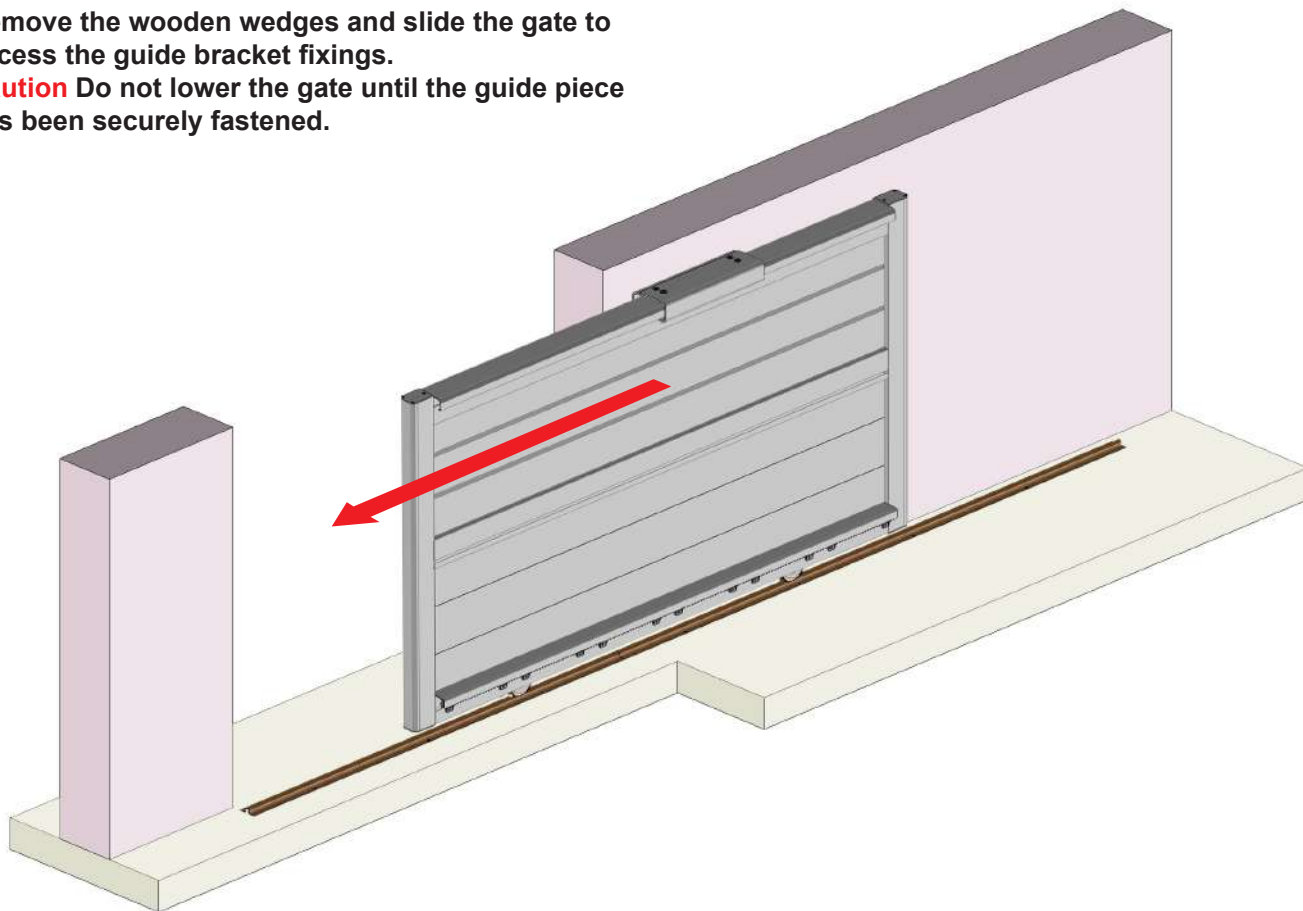
CAUTION,
The overlap of the gate, when closed on the guide side, relative to the wall must be at least 500 mm.



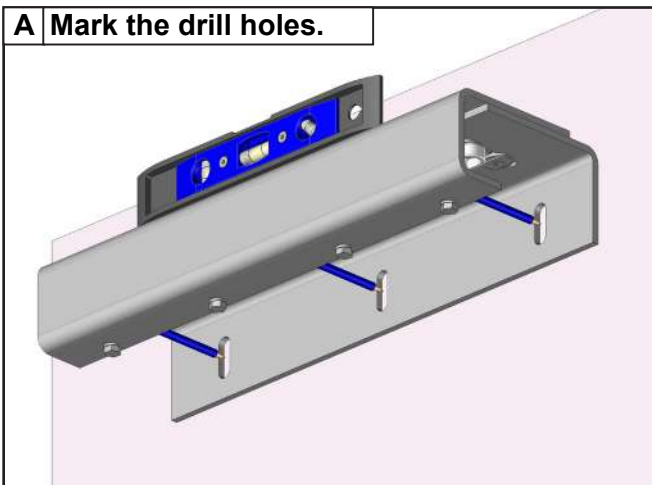
15 Installation of the guide piece continued.

Remove the wooden wedges and slide the gate to access the guide bracket fixings.

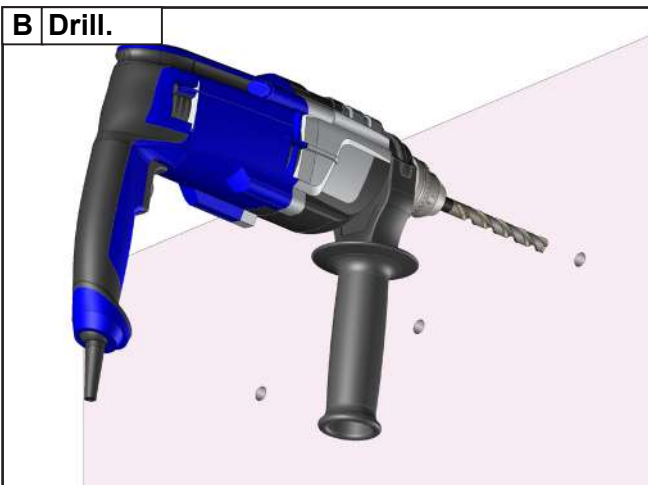
Caution Do not lower the gate until the guide piece has been securely fastened.



A Mark the drill holes.



B Drill.

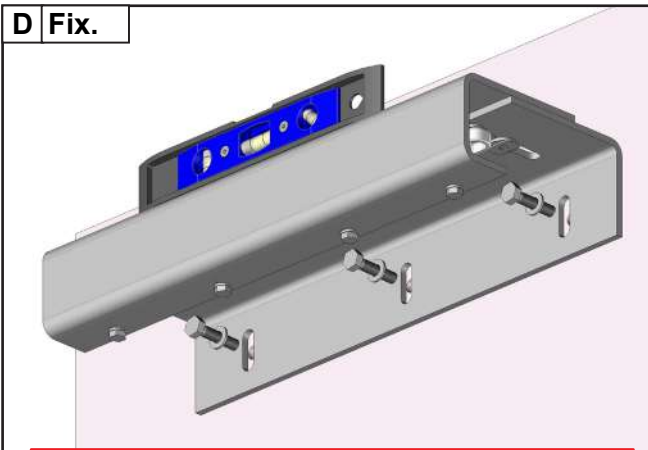


C



Adapt the fixing to the type of wall. Ø8mm fixing kit not supplied. For fixings using chemical anchors, refer to the instructions supplied with the anchors.

D Fix.

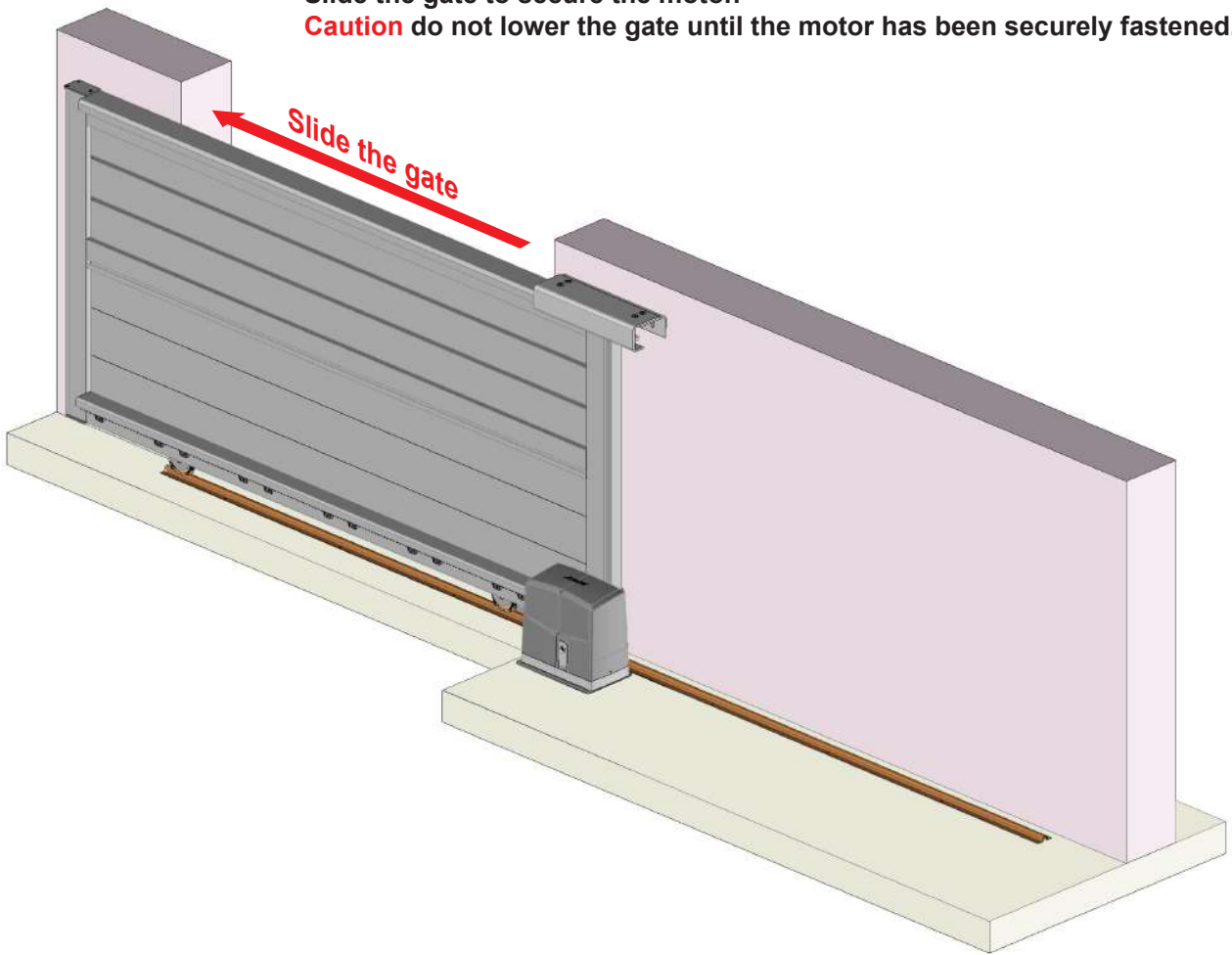


CAUTION,
Ensure that the guide piece is securely fastened. Risk of falling.

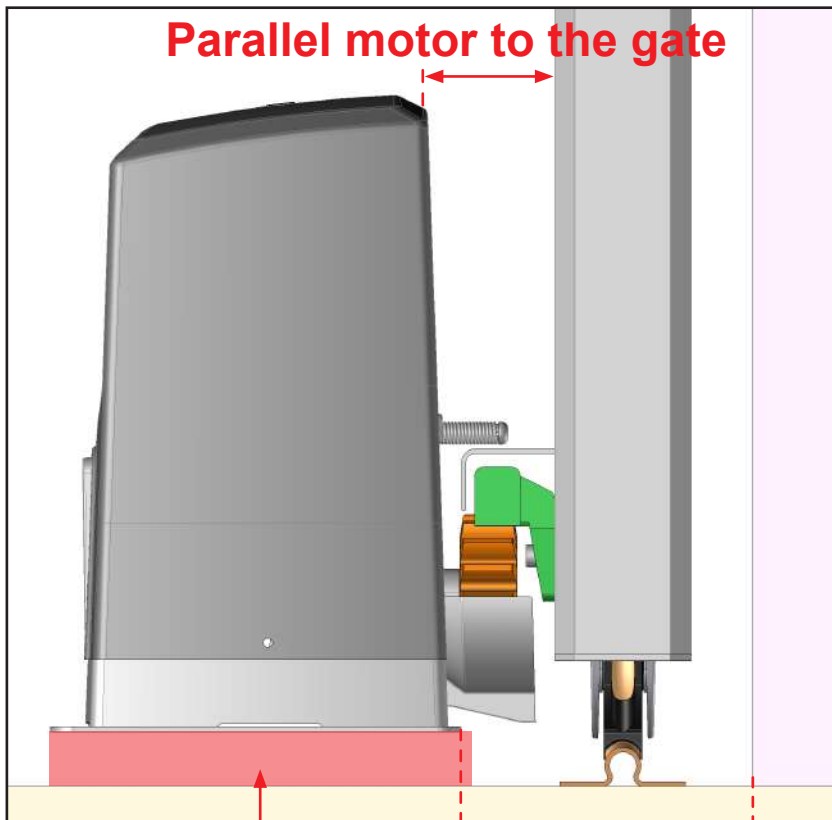
16 Installation of the motor.

Slide the gate to secure the motor.

Caution do not lower the gate until the motor has been securely fastened.



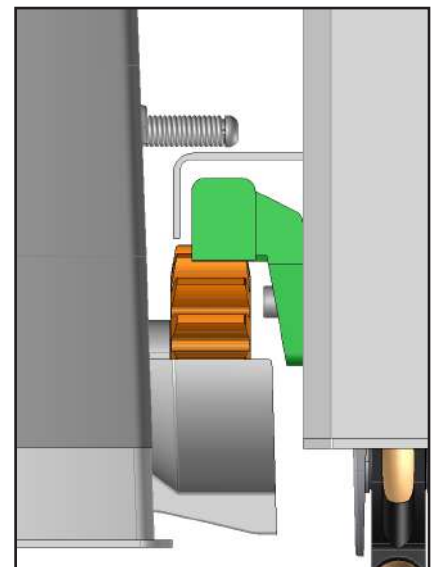
Parallel motor to the gate



25mm extension
Not provided

130mm

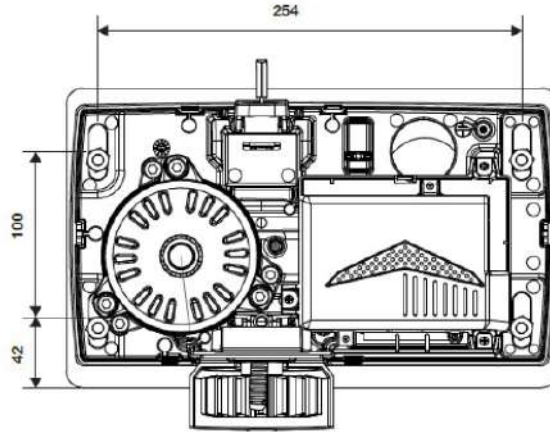
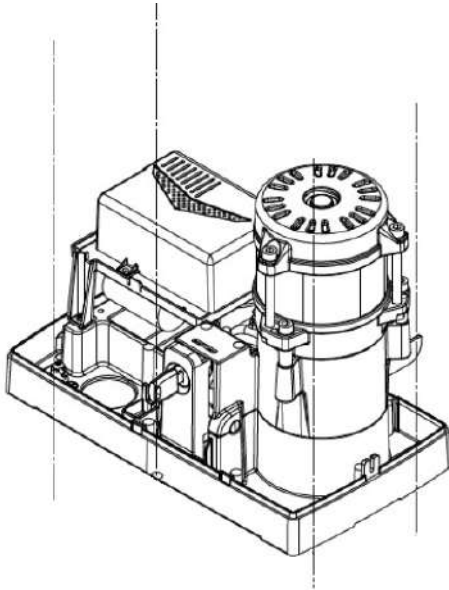
BEWARE OF COLLISIONS
Ensure that the motor and its end stop do not collide with the gate components.



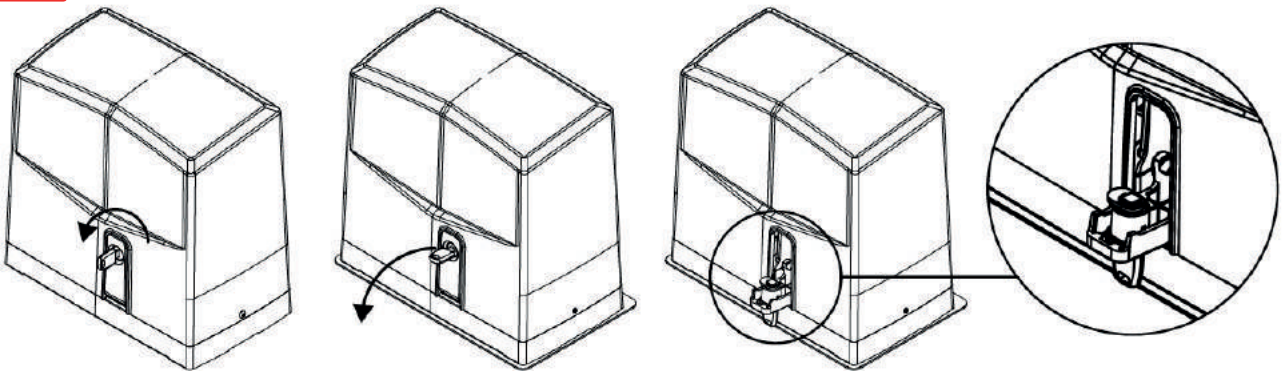
17 Motor mounting.



Adapt the fixing to the type of ground. Fixing kit not supplied. For fixings using chemical anchors, refer to the instructions supplied with the anchors.

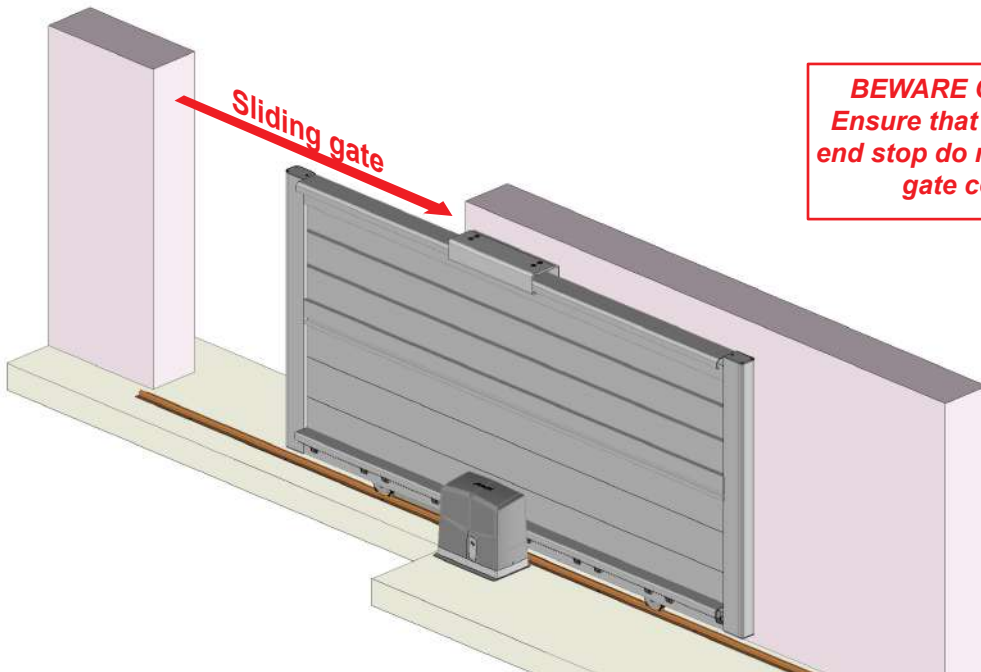


Unlash the motor.



Slide the gate to engage it with the motor.

Caution do not lower the gate until the motor has been securely fastened.

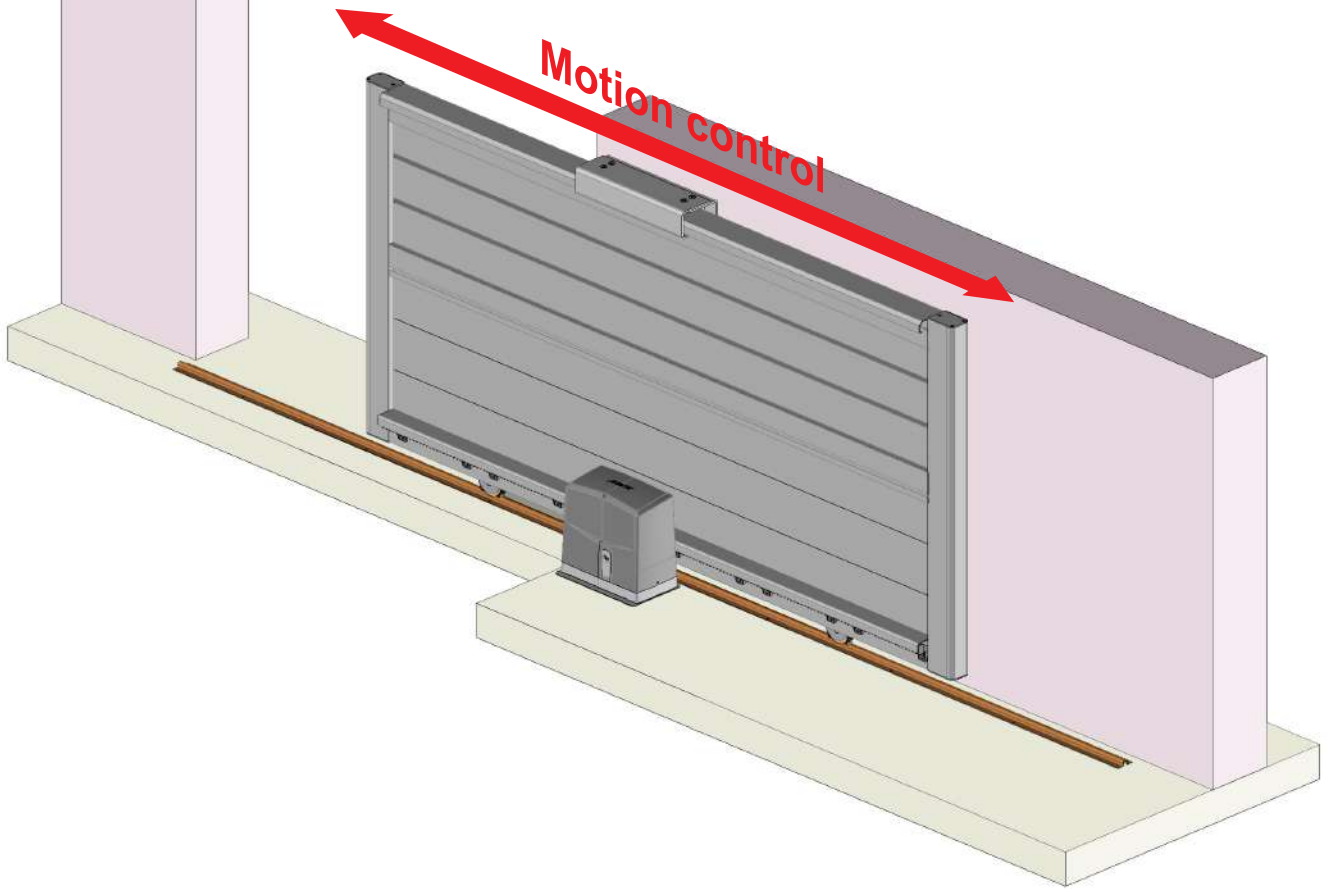


BEWARE OF COLLISIONS
Ensure that the motor and its end stop do not collide with the gate components.

18 Movement control.

Slide the gate to validate the movement. Check the movement at the motor; the gate should slide effortlessly.

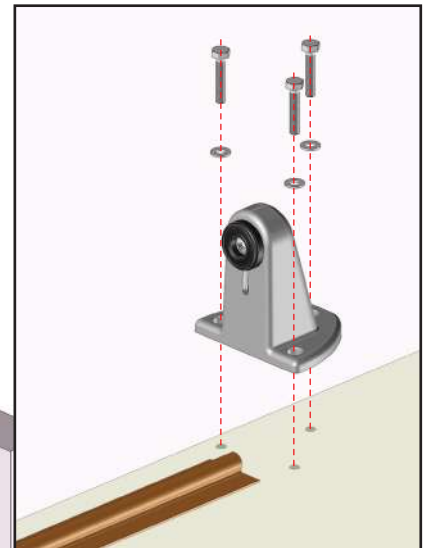
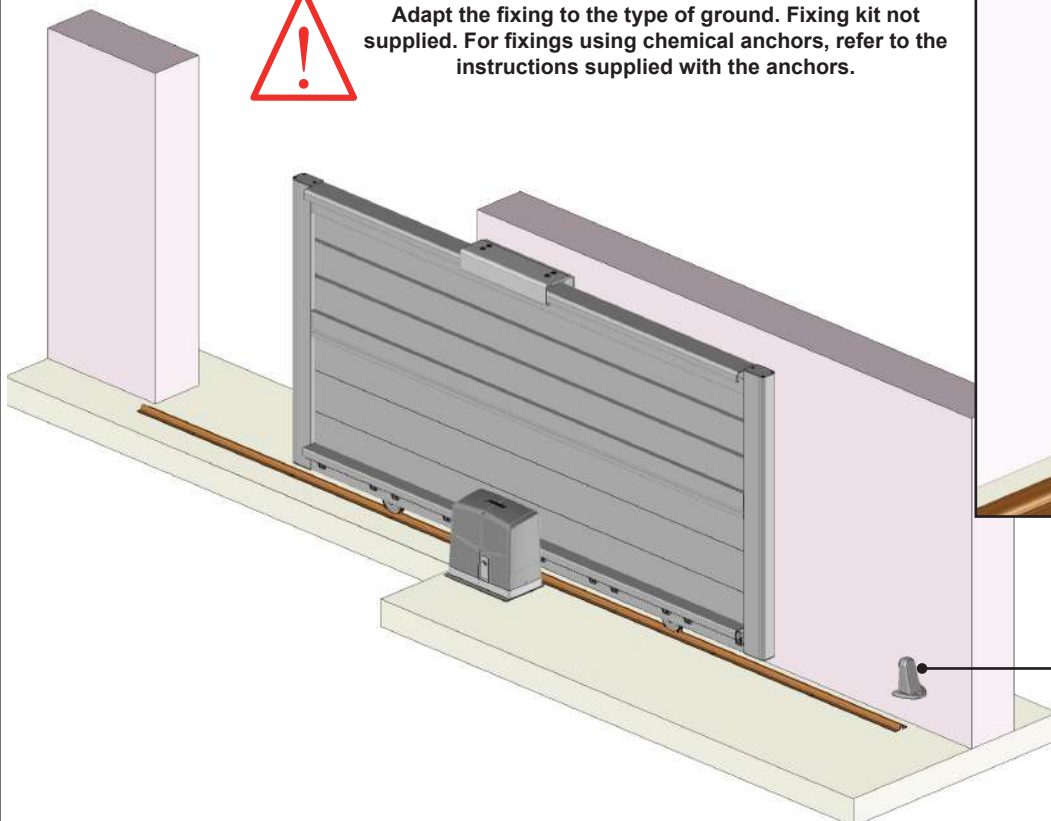
Caution do not lower the gate until the motor has been securely fastened.



19 Installation of the opening stop.

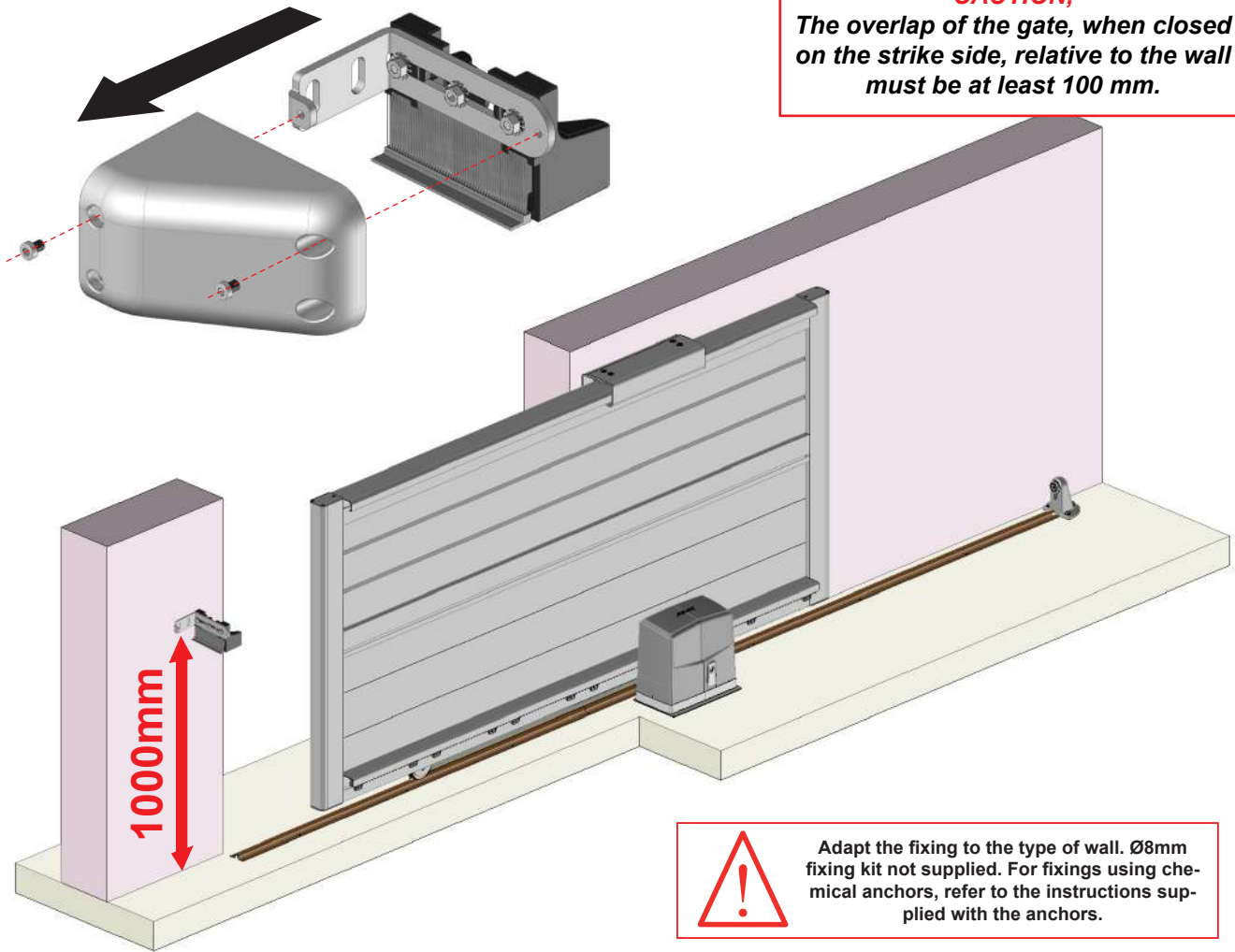


Adapt the fixing to the type of ground. Fixing kit not supplied. For fixings using chemical anchors, refer to the instructions supplied with the anchors.

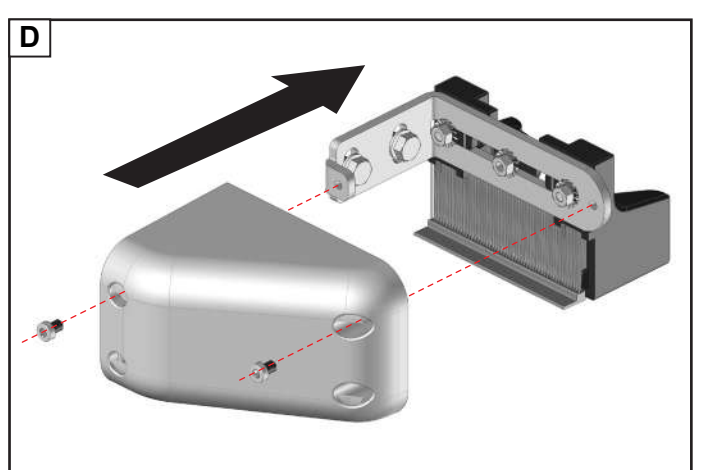
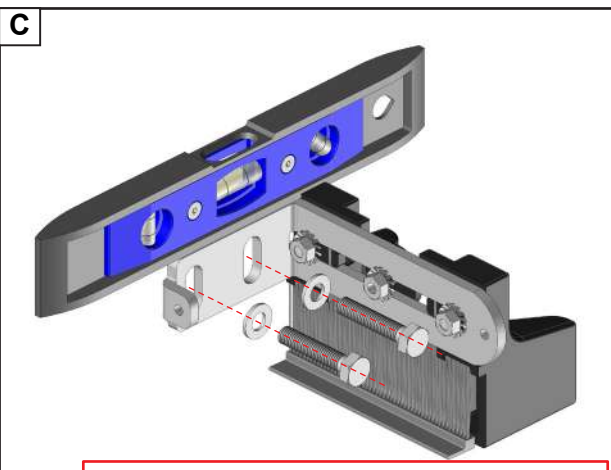
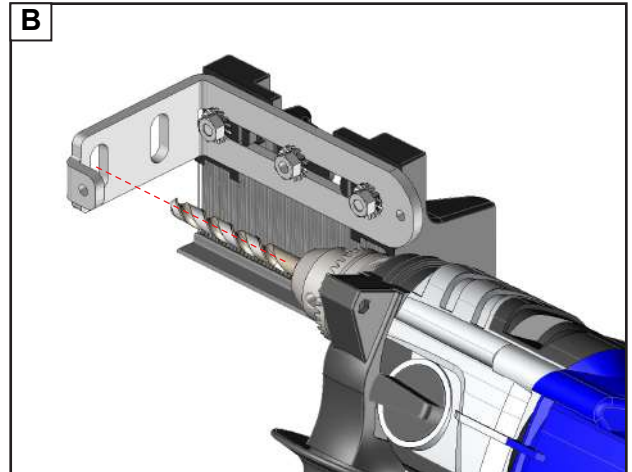
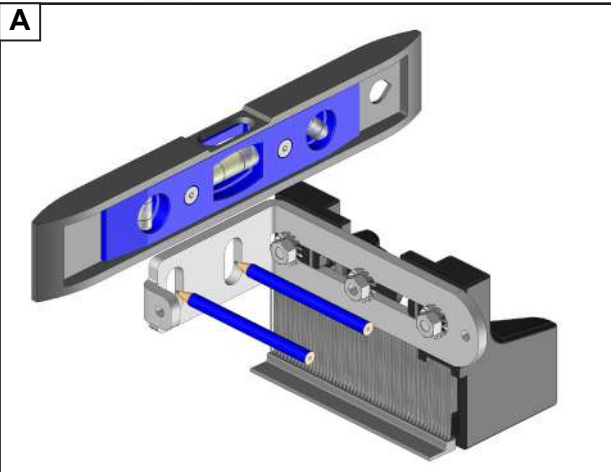


20 Installation of the locking strike plate.

CAUTION,
The overlap of the gate, when closed on the strike side, relative to the wall must be at least 100 mm.

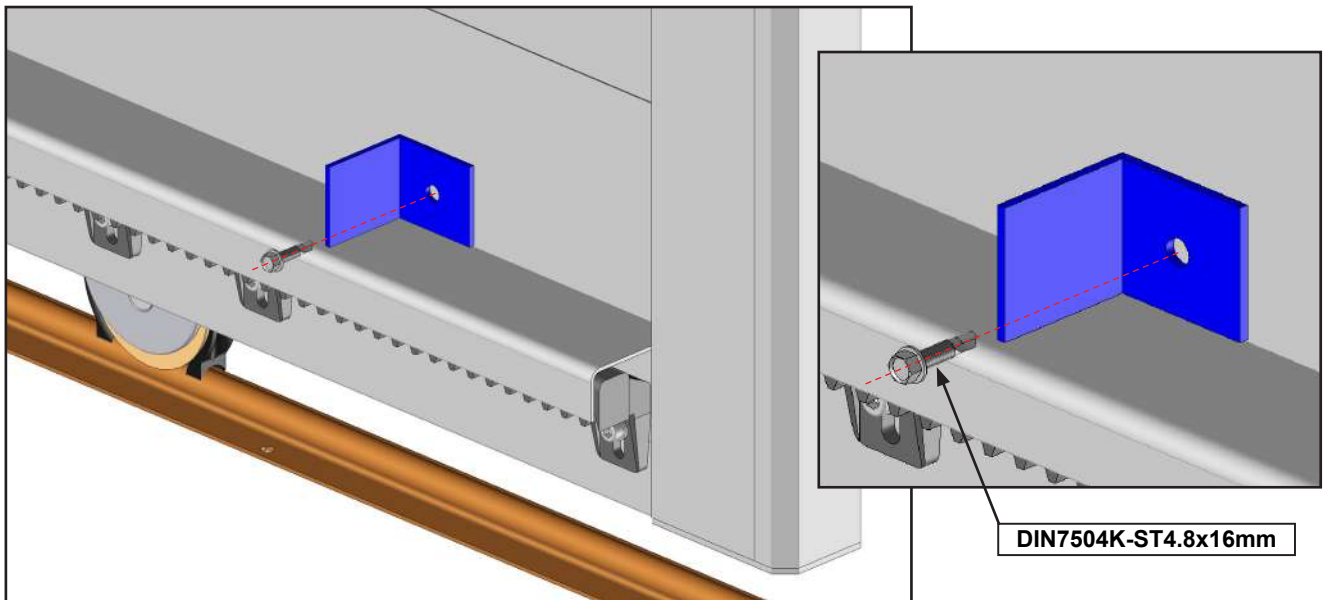
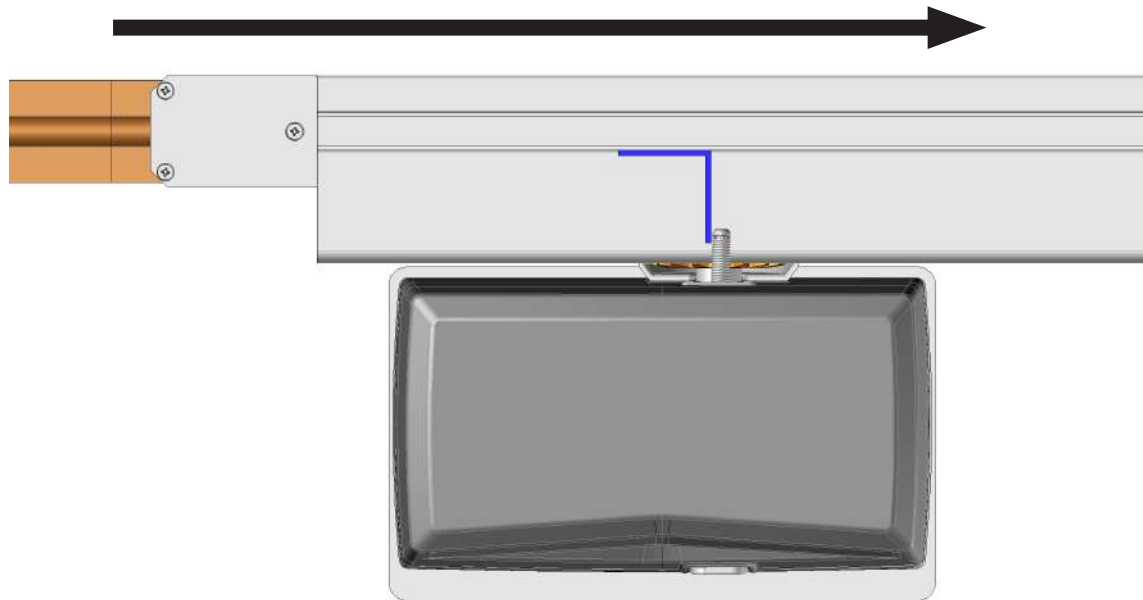
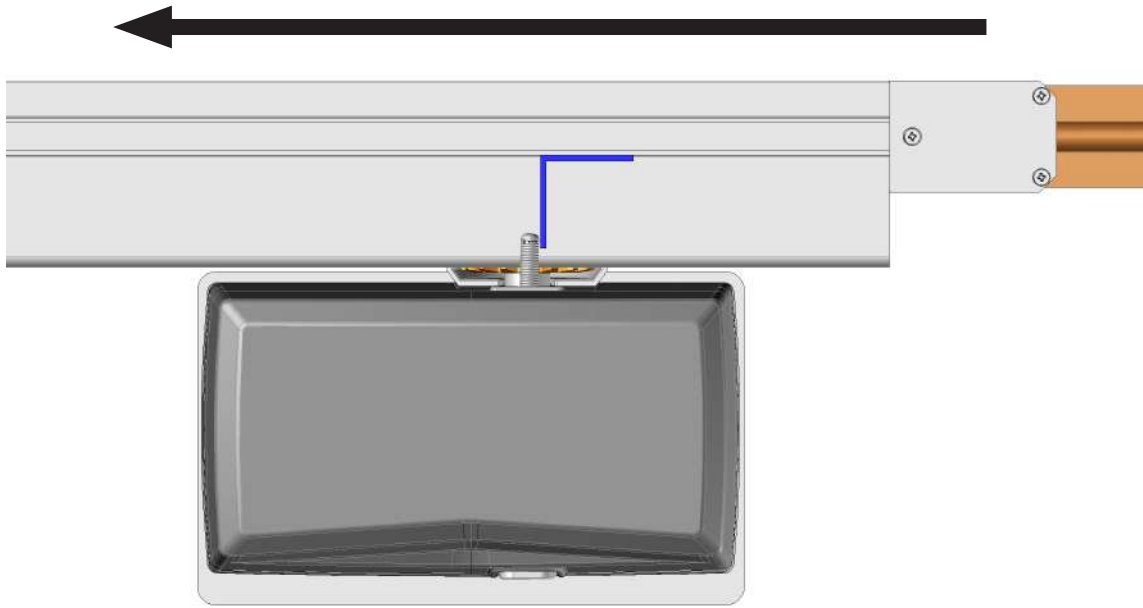


Adapt the fixing to the type of wall. Ø8mm fixing kit not supplied. For fixings using chemical anchors, refer to the instructions supplied with the anchors.

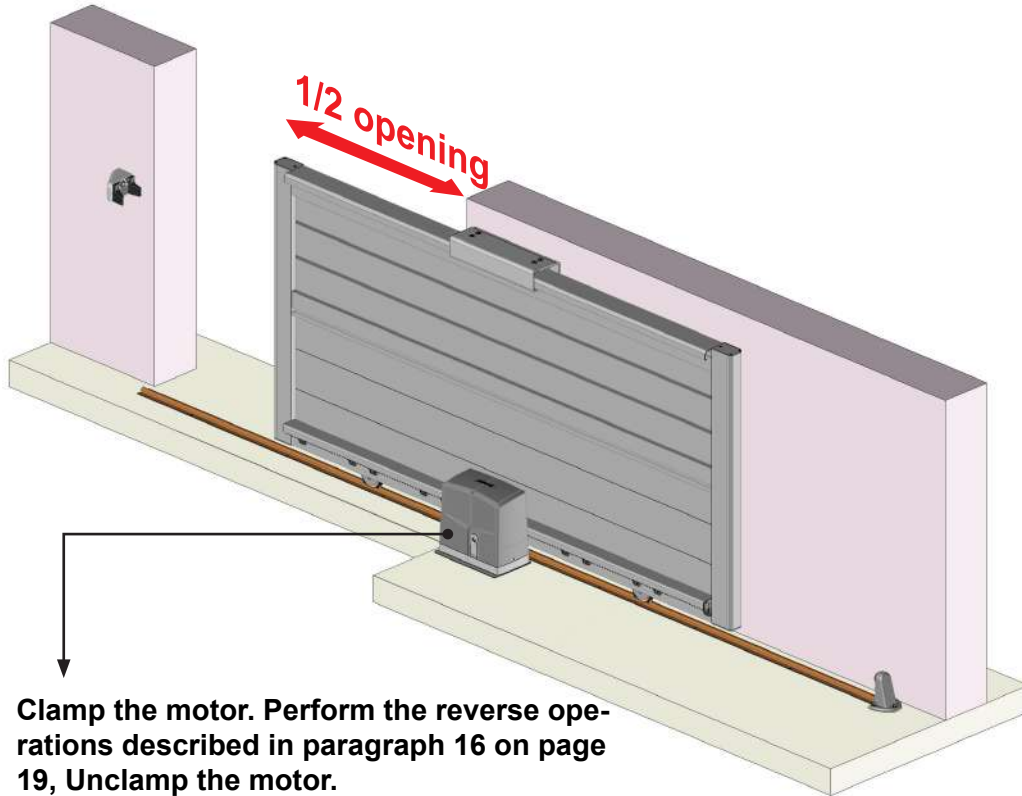


CAUTION,
Ensure that the guide piece is securely fastened.
Risk of falling.

21 Installation of mechanical motor stops.



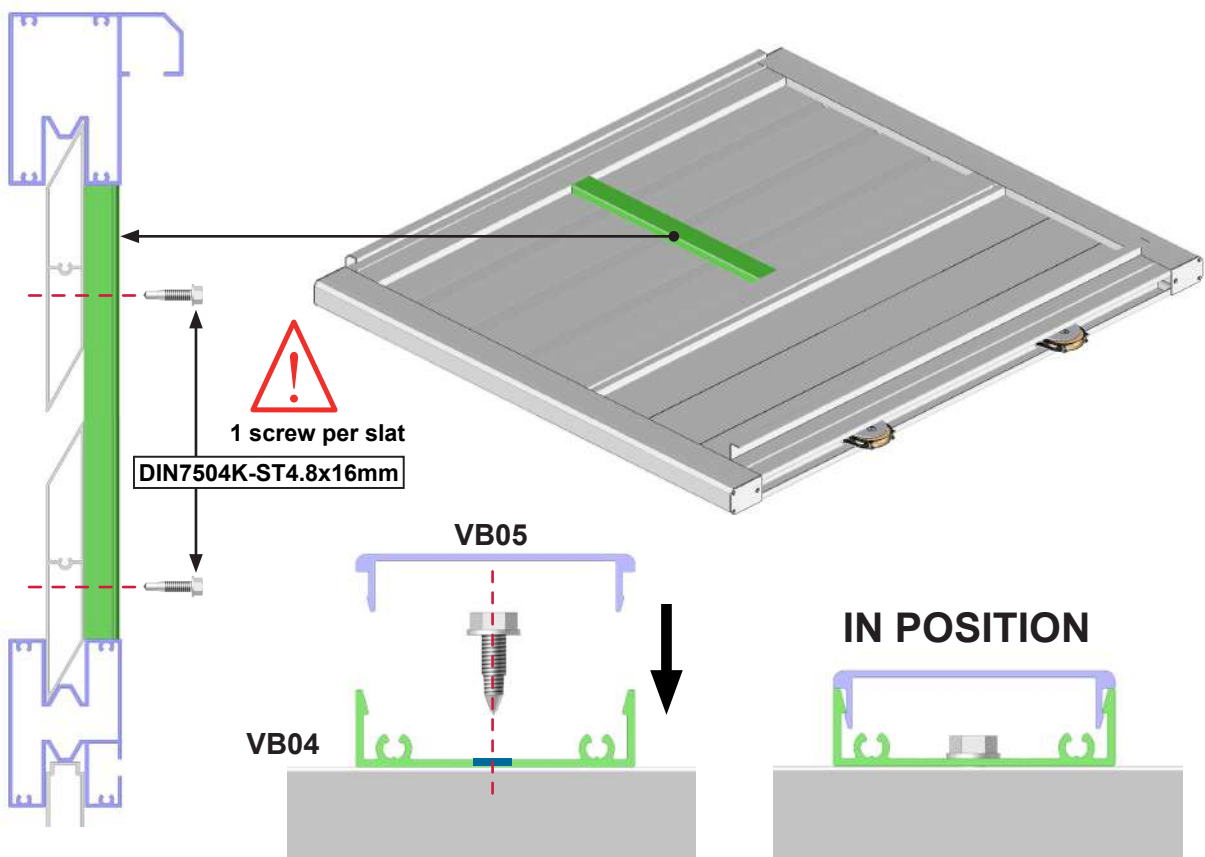
22 Preparation of motorisation.



23 Connection and programming.

Refer to the AUTOMO-SGATE230V instructions supplied with the motorisation kit.

24 Anti-vibration profile. Width only 3.5m to 5m.



WARNING

- Never use the product before it is completely secured. Before using the product, you must ensure that all components have been installed and tightened correctly.
- Check that your wall or floor is level. If the wall or floor is uneven or curved, wedge the parts or rail in place to align them correctly. Misalignment can cause malfunction, breakage and/or the product to fall.
- Do not operate the product while maintenance is in progress. Disconnect the product from the power supply when maintenance is in progress.
- Do not allow children to play with the control devices. Keep remote control devices out of the reach of children. Supervise your children to ensure that they do not play with the product or remote control.
- Be careful with your fingers during installation.
- No changes to the design or configuration of the equipment should be made without first consulting the manufacturer.
- Never use accessories not recommended by the manufacturer. These could create risks for the user and damage the product. Only use original parts and accessories.
- If the product is to be stored, it must be stored under cover in a dry, non-humid environment.
- Do not use the product in areas subject to vibrations or shocks.
- Use fasteners that are suitable for the material of your façade and floor. Seek advice from a specialist. Fastening hardware is not supplied.
- Do not unpack the product using a tool that could scratch it.

PRODUCT USE:

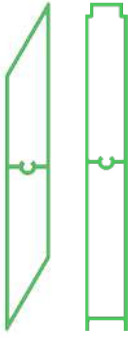
- Never use the product if it is damaged.
- Only use this product for its intended purpose.
- We accept no liability for damage resulting from incorrect use or failure to follow the instructions.
- Do not hang anything on the product frame. It could fall and cause property damage and/or personal injury.
- Do not hang from the product frame. It could fall and cause damage to property and/or personal injury.
- Ensure that no foreign objects can damage the product when opening or closing it.
- Do not light a fire near the product.

REPAIR AND MAINTENANCE:

- Never attempt to disassemble or repair the product without the necessary qualifications. Call in a professional to carry out any necessary repairs.
- Do not use the product if it needs repair.
- Check the installation frequently throughout the year for any imbalance or signs of wear and tear on parts.
- Check the wall or floor fixings, clamping screws and other components frequently throughout the year.
- Clean the frame at the beginning and end of the season. Do not use detergent.

ELECTRICAL COMPONENTS:

- Before handling, ensure that the power supply is disconnected. Risk of electric shock.
 - If the power cable is damaged, it must be replaced by a qualified person (after-sales service or electrician) to avoid danger. The power cable for this motorisation can only be replaced with the same type of cable (same wire cross-section and same protection rating).
 - Ensure that the motor is not located in a non-immersible area. The motor must never be immersed in water.
 - Electrical wiring must be connected in accordance with the electrical standards in force in France (standard NF C 15100). If in doubt, contact a certified electrician.
 - Before connecting the product to a power source, check that the voltage of this power source and the nominal voltage correspond to the power specifications in the instructions.
 - Do not wet the automation box. The automation must be positioned away from the elements.
- Do not allow children to play with the automation box.
- Danger of explosion! NEVER incinerate, short-circuit, disassemble, charge or attempt to reactivate the batteries.
- Do not expose the batteries to extreme temperatures. Do not place the remote control on a radiator. Battery acid leaks can cause damage.
- Replace used batteries with batteries of the same type only.
- Caution! Risk of explosion! Never insert batteries in the wrong direction.
- In the event of leakage, remove them from the battery compartment using a cloth.
- Dispose of your batteries in accordance with applicable regulations. In the event of battery acid leakage, avoid contact with skin, eyes and mucous membranes. Immediately rinse affected areas after contact with acid and rinse thoroughly with water. Consult a doctor.
- Swallowing batteries can be fatal. Keep batteries out of the reach of children and pets. Consult a doctor immediately if a battery is swallowed.
- Remove used batteries from the remote control. Remove the batteries from the remote control when not in use for an extended period of time.
- The number of cycles assigned must not be exceeded.



PORT-COUL-MIX



**Installation instructions
MIXED SLIDING GATE**