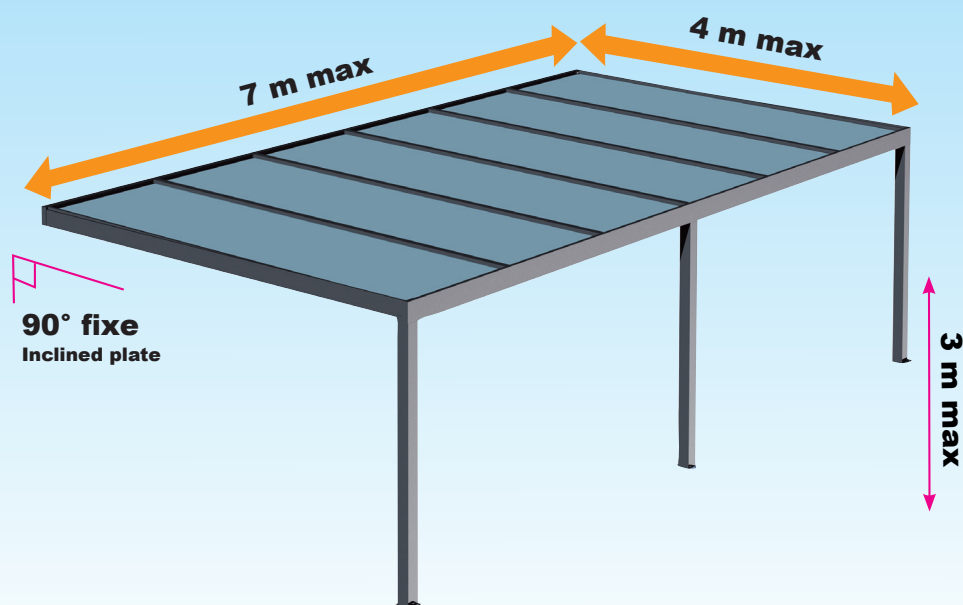


PERGOLA TOP LUCIA

New pergola for
32mm panels



PRODUCT ADVANTAGES:

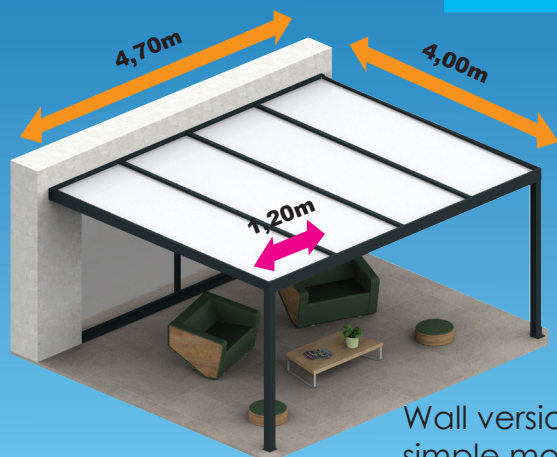
- Total and constant coverage
- 32mm Thermotop
- Easy assembly with clip on system
- Max. width of panel 1.20 m
- Multi-purpose coverage:
carport, cover garden and terrace
- Water drainage to the posts thanks
to the front cassette profile
- Posts 105 x 105mm
- Horizontal frame 0° of the pergola
and panel with tilt inside the frame.
With 4cm slope for wall installation
With 2cm slope in free standing.

MITJAVILA

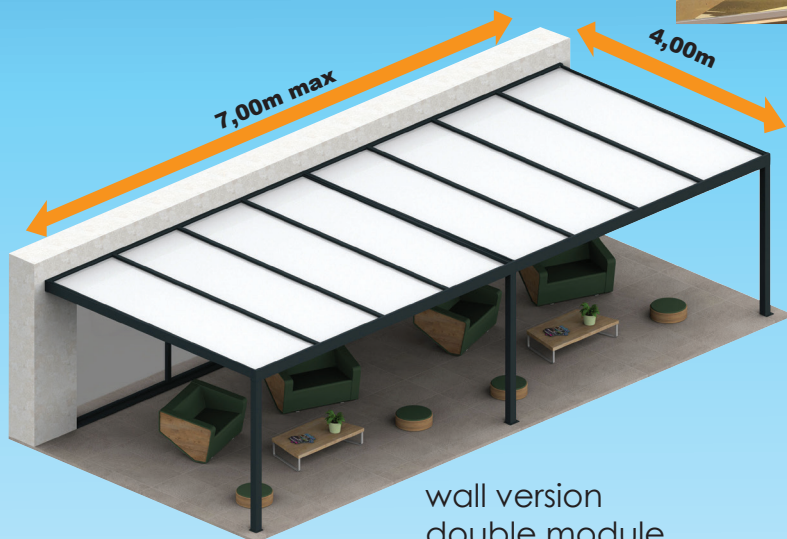
France : professionnels@mitjavila.com
Export : export-fr@mitjavila.com

TECHNICAL INFORMATION

TOP LUCIA



Wall version
simple module



wall version
double module

MAXIMUM DIMENSION

Width per panel: 1,20 m max

Width between posts: 4,70 m

Max. Advanced: 4 m

Max. Height of post: 3 m

Tilt: Straight 0°

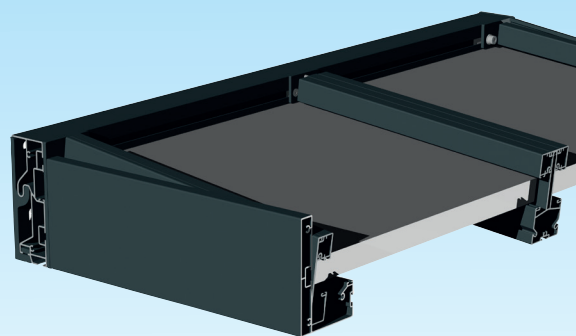
Slope of panels: 2 ou 4 cm

New profile for wall installation.

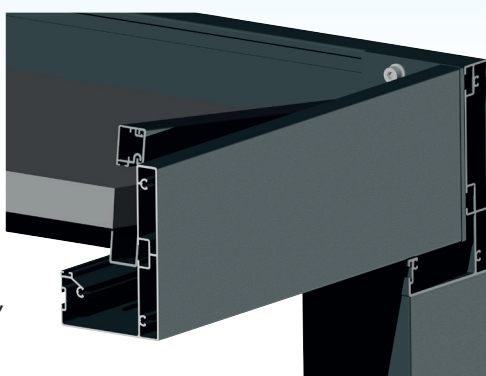
It allows to fix on the fixing plate S275 to get an easy and optimum installation. It also allows to clip panel on upper side for make sealing.

The front cassette assures the liason between rafters the posts. It also acts as a gutter that channels the water for drainage through the posts.

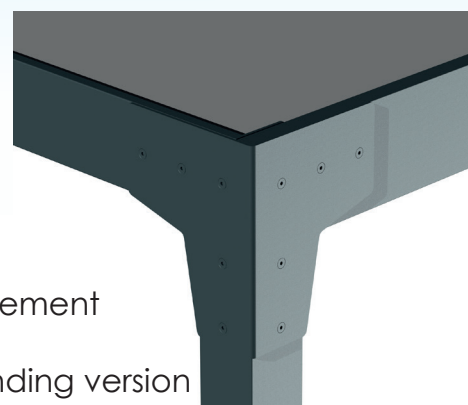
The new lateral profile allows a mechanical attachment in a groove (screw and plate) that enables the creation of a pitch to evacuate water.



New wall hook
bracket with profile.



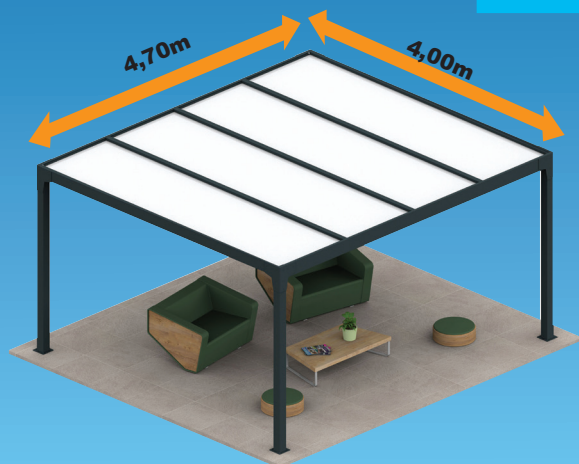
Inclined side profile,
panel support



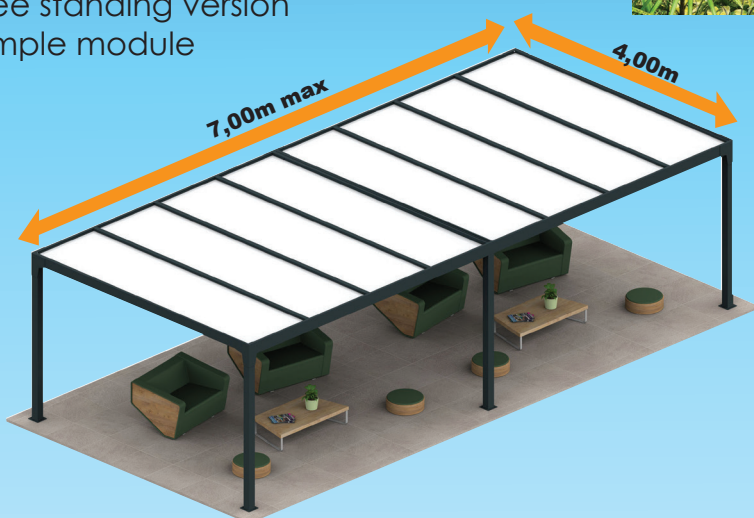
Reinforcement
bracket
free standing version

TECHNICAL INFORMATION

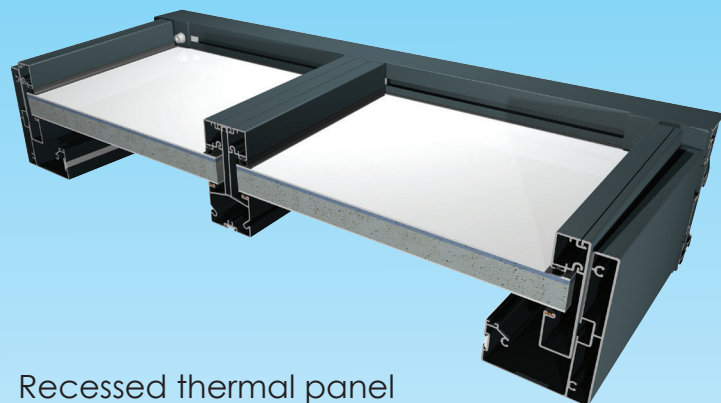
TOP LUCIA



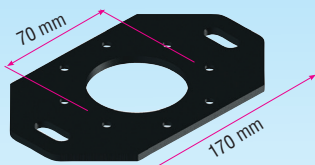
free standing version
simple module



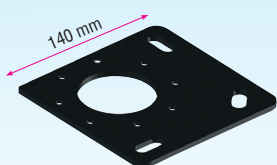
free standing version
double module



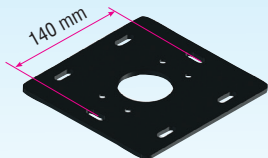
Recessed thermal panel
(aluminum sandwich panel)
in profiles with a slight inclination.



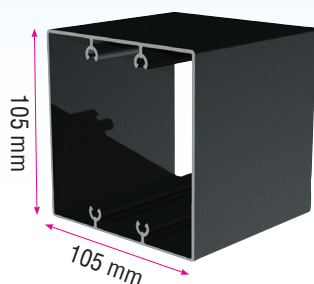
Floor mounting bracket: **ST3802**



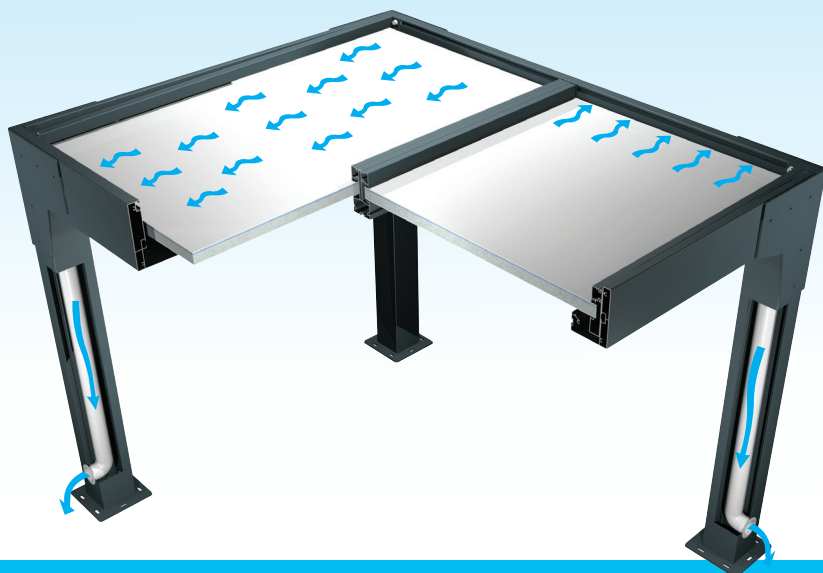
Floor mounting bracket: **ST38**



Floor mounting bracket
free standing installation **ST4509**



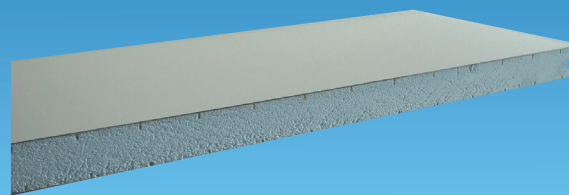
PA29



Water drainage

OPTIONS - ACCESSORIES

The new pergola Top Lucia is compatible with all the 32mm thick panels. Thermal panels can be adjusted perfectly according to the luminosity you desire on your terrace.



Thermal board
(aluminum sandwich panel)

Thermotop panel available:

 - White and white (2 sides)

  - Anthracite and white (inside)

Maximum range / snow measurement

Pergola rafter RDM EUROCODE 1

Pergola Poly Top Classique (PPV2103)

Advanced >	<3 m	3 m	3,5 m	4 m
Max load with thermal panel 1m20	140 kg/m ²	100 kg/m ²	60 kg/m ²	35 kg/m ²



Side coverage



Side coverage with all range of sliding screen 105mm

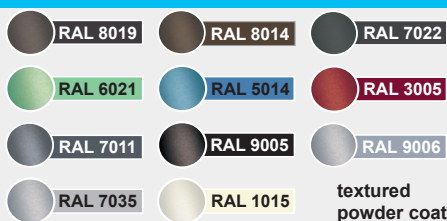
- Sliding glass
- Zip and Cristal Screen
- Clastra*

Standard frame finishing

Ral standard



+ Ral sélection



Led Lighting

Full kit including dimmable Led lighting
On front cassette **KITLEDFIX1C**
On 3 sides **KITLEDFIXT3C**

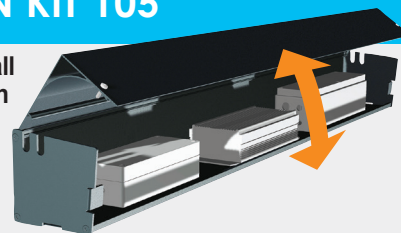


- 3x LED strip lighting 5ml
- 1x Transformer 3 outputs
- 1x Automation – AUTOMOVERLED
- 1x Remote control 7cx – TELEVN07C



OPTION KIT 105

KIT105 storage wall box for automation and connections



www.mitjavila.com

MITJAVILA

France : professionnels@mitjavila.com
Export : export-fr@mitjavila.com