



Installation instructions

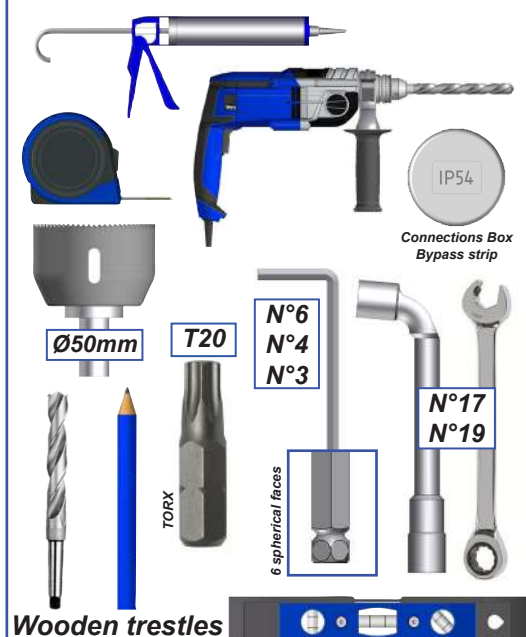
FABRIC PERGOLA V2



3 people
1 day

INSTALLATION PREPARATION

Tools needed



IMPERATIVES



CAUTION, read the instructions below completely before starting to install your pergola. Your safety depends on it.



BEFORE BEGINNING THE INSTALLATION, check the contents of the packages received; if an element catches your attention or is missing during this verification, contact our technical service as soon as possible (do not mount the structure if any elements are defective.)

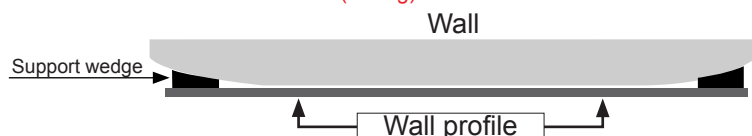


ATTENTION, it is strictly forbidden to climb on the pergola structure. The manufacturer assumes no responsibility for damage caused to the pergola or its contents by natural disasters or special events for any pergolas installed in non-compliance with the recommendations in the installation instructions.

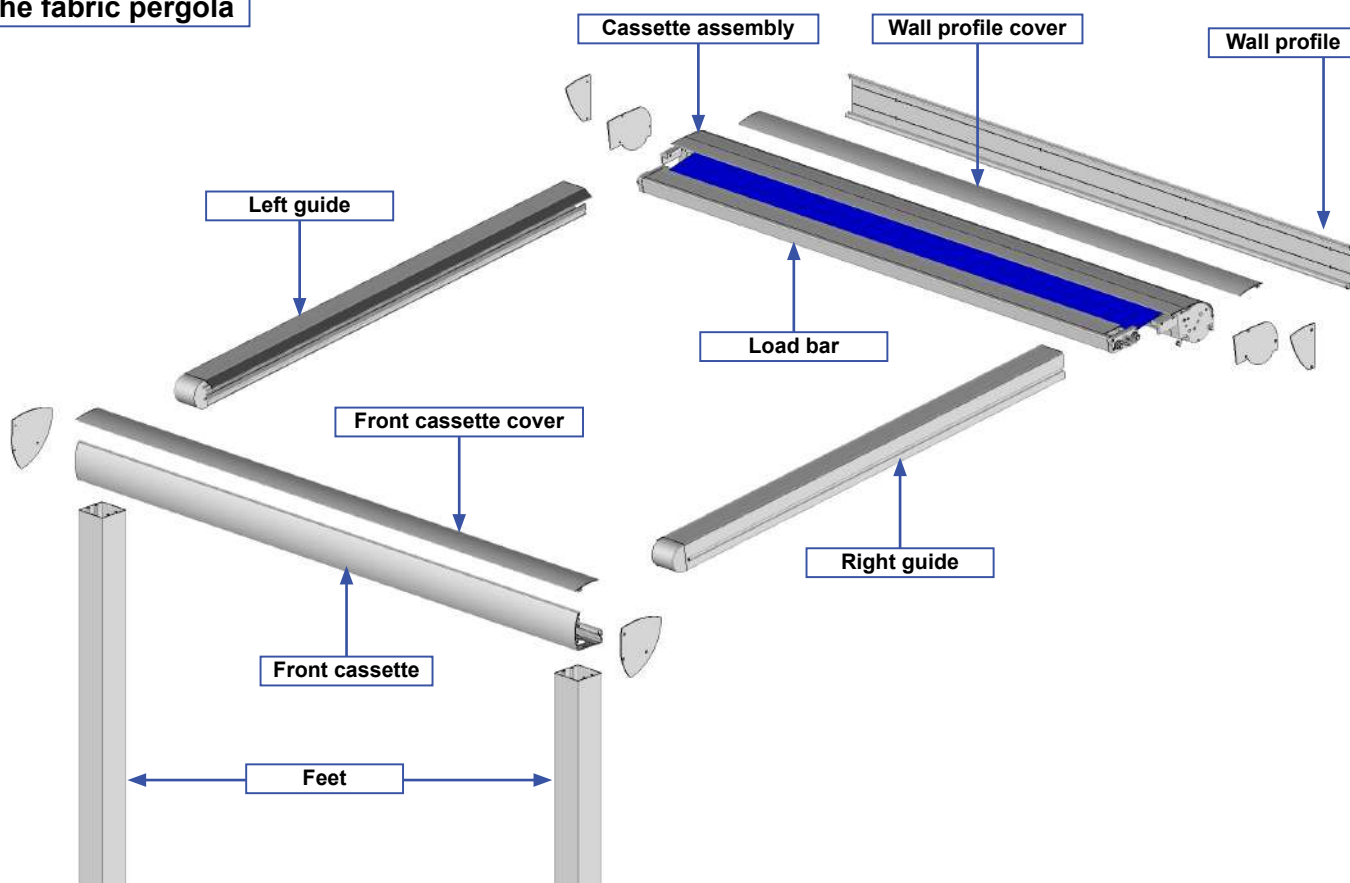
Check the flatness of your wall. In the case of a hollow or curved wall, perform a solid wedging of the wall box in order to obtain a correct alignment.

If there is no concrete slab on the ground, make concrete studs at each leg, so that the supports can be fixed. Dimension and composition of the concrete studs:

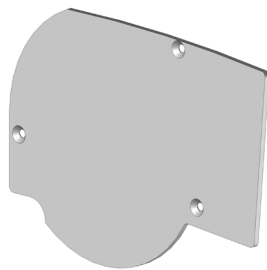
- 63cm x 63cm x 63cm (500Kg) + REINFORCEMENT



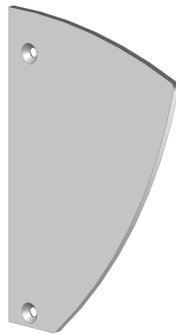
The fabric pergola



The pieces.



JPV11 07 :
Nb : 2 per product
(Right and left piece)



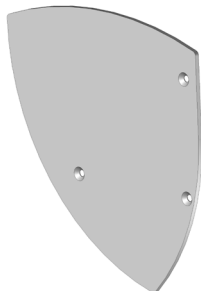
JPV11 08 :
Nb : 2 per product
(Right and left piece)



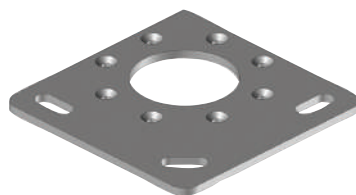
PLO5149 :
Nb : 1 per span
In the load bar



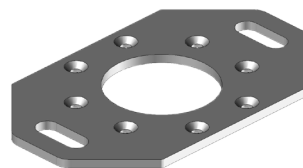
AC12 :
Nb : 2 per span
In the load bar



JPV19 16 :
Nb : 2 per product
(Right and left piece)



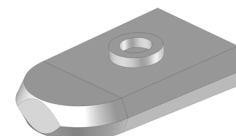
ST38:
Nb : 2 per product



ST38 02 :
Nb : per intermediate foot



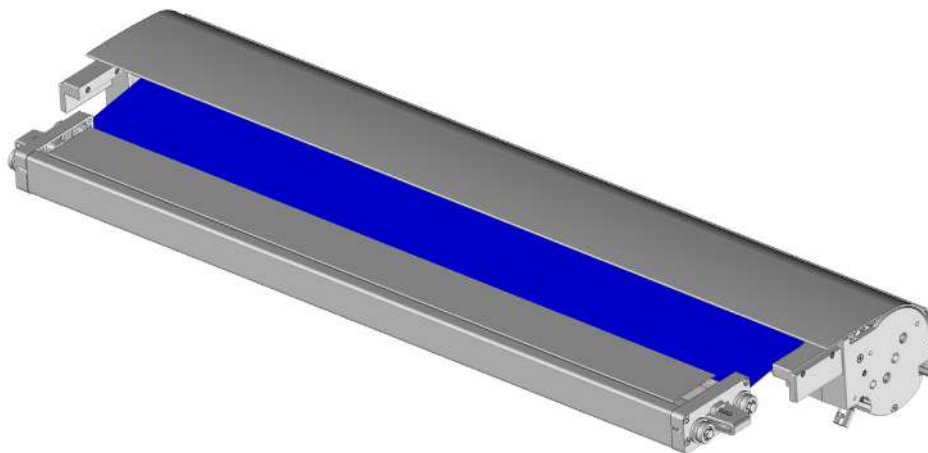
PLB9041 :
Nb : 2 per evacuation



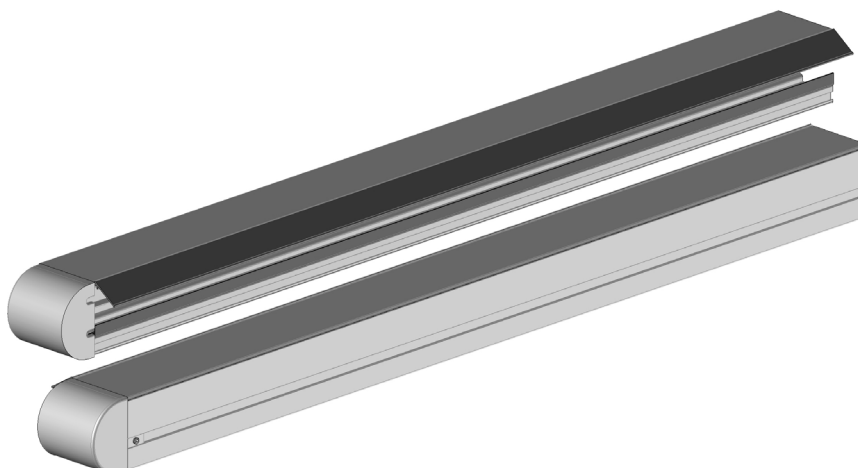
CM155 :
Nb : 1 per span

Assemblies.

Note : exploded view page 35

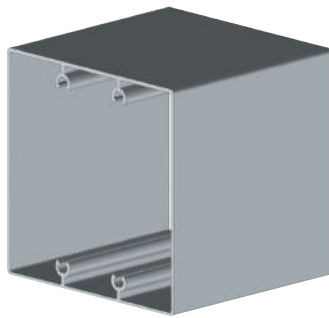


Cassette assembly
N°: 1 per span

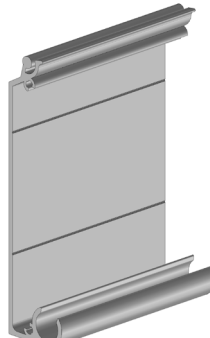


Guides 1 right + 1 left
N°: 2 per span

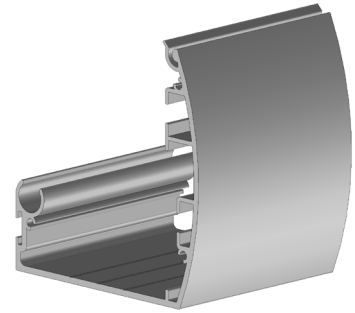
The profiles.



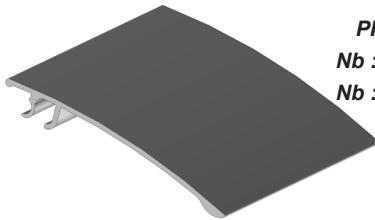
PA29 :
Nb : span number + 1



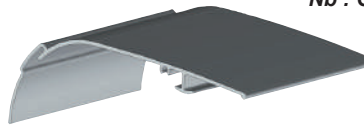
PPV11 02 :
Nb : 1 for < 7m
Nb : 2 for > 7m



PPV19 05 :
Nb : 1 for < 7m
Nb : 2 for > 7m



PPV20 03 :
Nb : 2 for < 7m
Nb : 4 for > 7m



CE135 06 :
Nb : On the Cassette assembly for 1 span
Nb : 1 for 2 span
Nb : 2 for pergola > 7m

Visserie et accessoires



DIN7982ST4.8x38mm
Nb : 4



DIN7504K-ST5.5x50mm
Nb : 4 per foot



DIN912M8x20mm
Nb : 6 per span



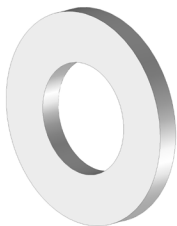
DIN912M8x16mm
Nb : 2 per span



ISO14586ST4.8x25mm :
Nb : 18 per product



DIN913M6x20
Nb : 4 per product



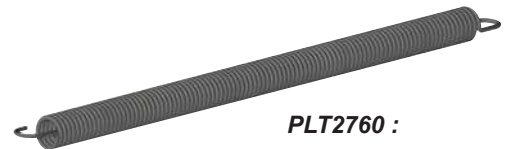
DIN125M8
Nb : 8 per span



PLP11180
Nb : 4 per span



PLT2760 :
Nb : 2 per span



PLT2760 :
Nb : 2 per span



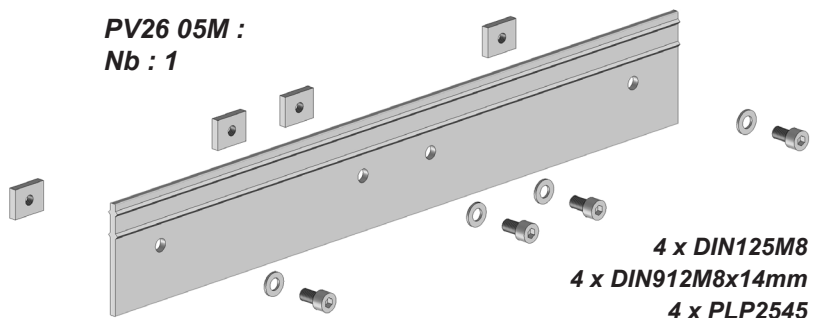
Joint JO51
Nb : 0 for 1 span
Nb : 1 for 2 span

Connecting pieces. Only for structures > 7m.

PLA1492 :
Nb : 2

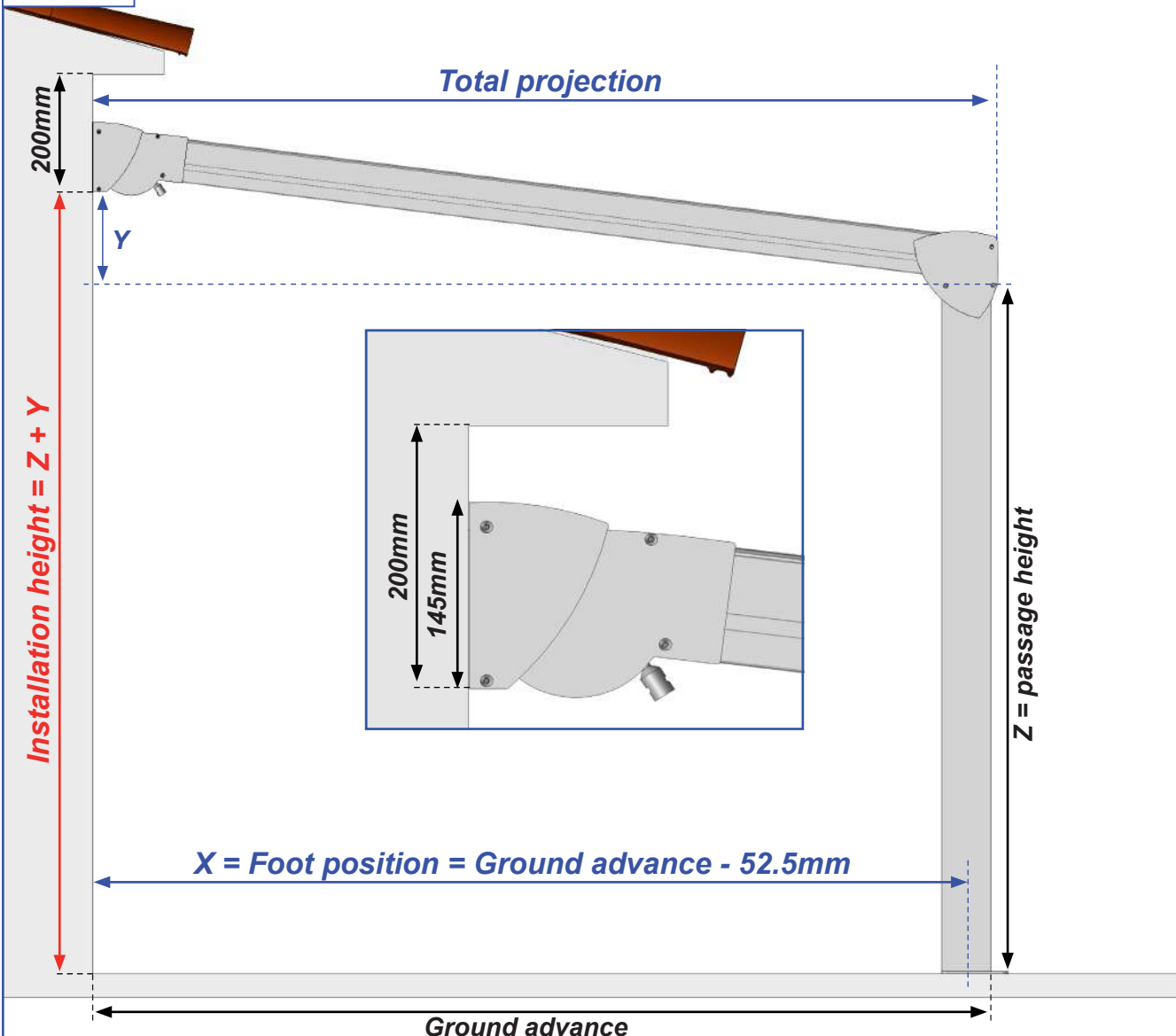


PV26 05M :
Nb : 1



4 x DIN125M8
4 x DIN912M8x14mm
4 x PLP2545

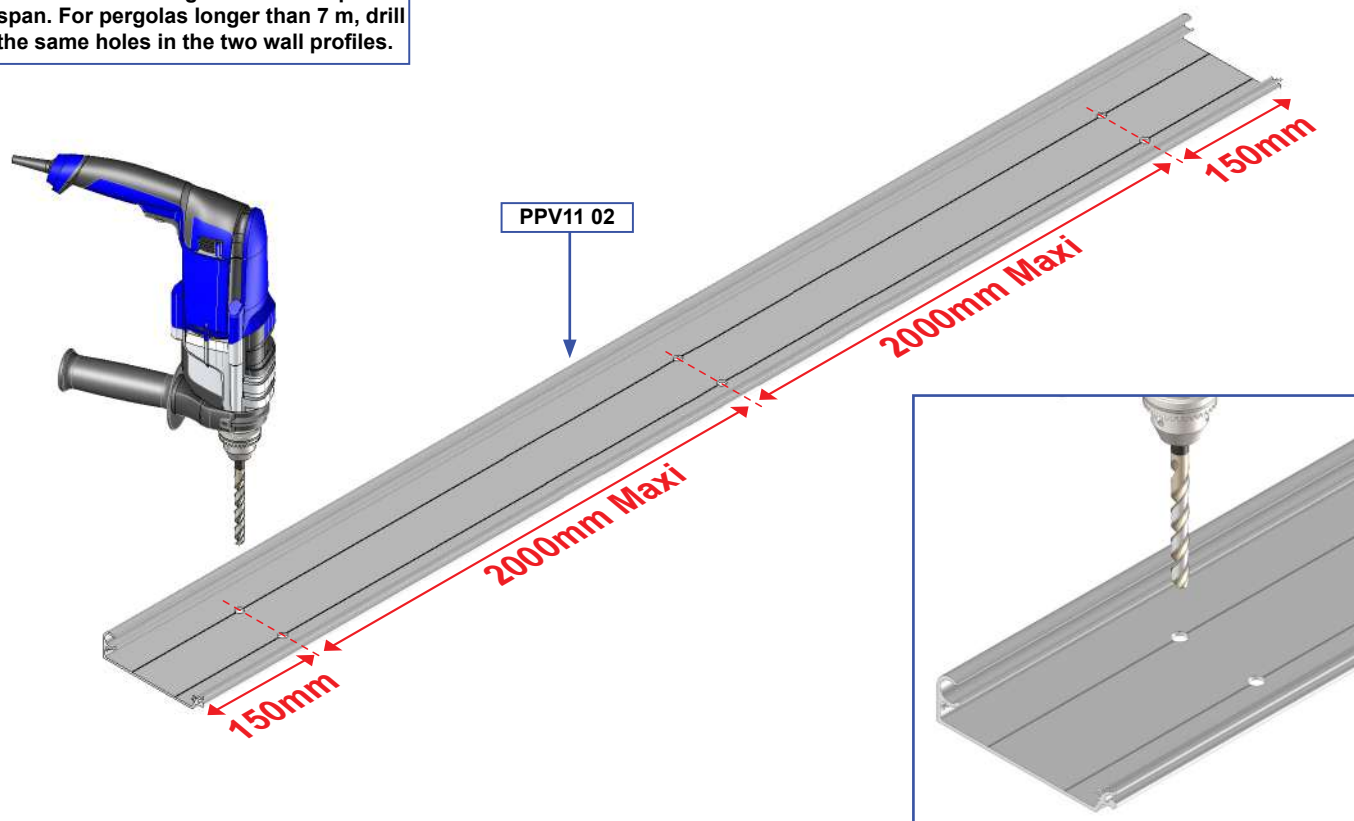
Situation.



Ground advance	Y tilt 5°	Y tilt 10°	Y tilt 15°
2000mm	166mm	345mm	530mm
2100mm	175mm	362mm	556mm
2200mm	183mm	380mm	583mm
2300mm	192mm	398mm	610mm
2400mm	201mm	415mm	637mm
2500mm	210mm	433mm	664mm
2600mm	219mm	451mm	690mm
2700mm	227mm	468mm	717mm
2800mm	236mm	486mm	744mm
2900mm	245mm	504mm	771mm
3000mm	253mm	521mm	797mm
3100mm	262mm	539mm	825mm
3200mm	271mm	557mm	851mm
3300mm	280mm	574mm	878mm
3400mm	289mm	592mm	905mm
3500mm	297mm	610mm	932mm
3600mm	306mm	627mm	958mm
3700mm	315mm	645mm	985mm
3800mm	324mm	663mm	1012mm
3900mm	332mm	680mm	1039mm
4000mm	341mm	698mm	1066mm

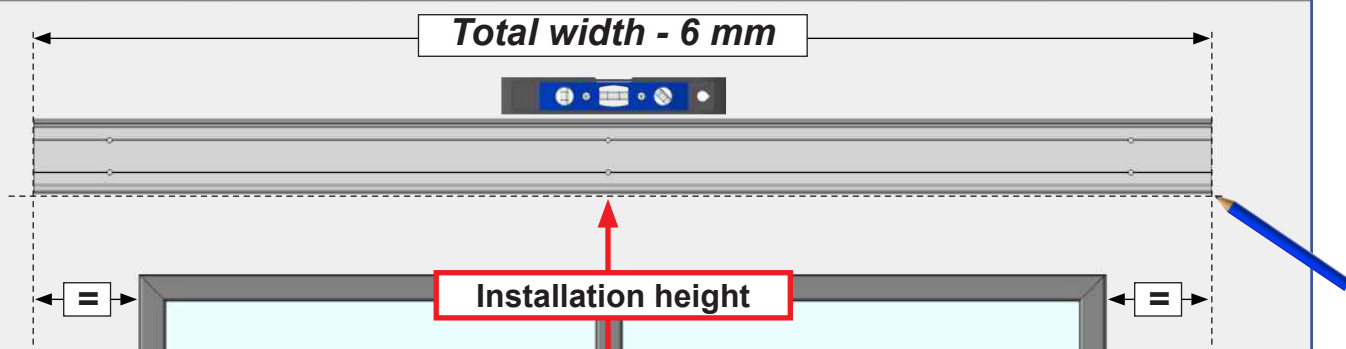
1 Pre-drill the wall profile.

Note : Make 3 fixings of 2 screws per span. For pergolas longer than 7 m, drill the same holes in the two wall profiles.

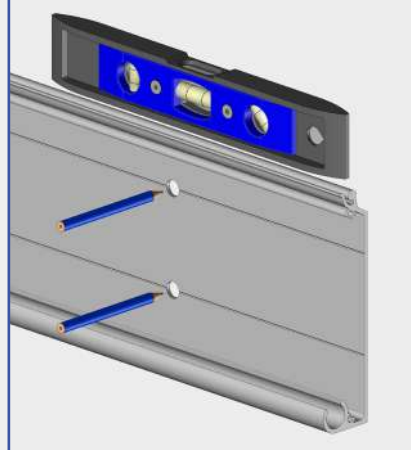


2 Installation of the wall profile. Pergola up to 7m wide.

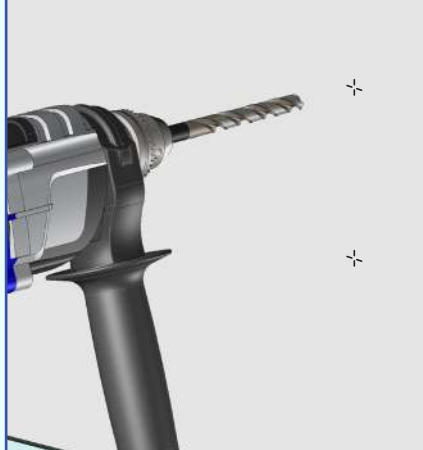
A Mark the installation height on the wall and place the wall profile.



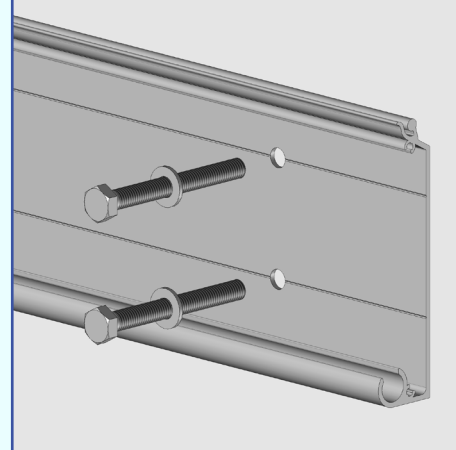
B Mark the holes.



C Drill.



D Fix the wall profile.

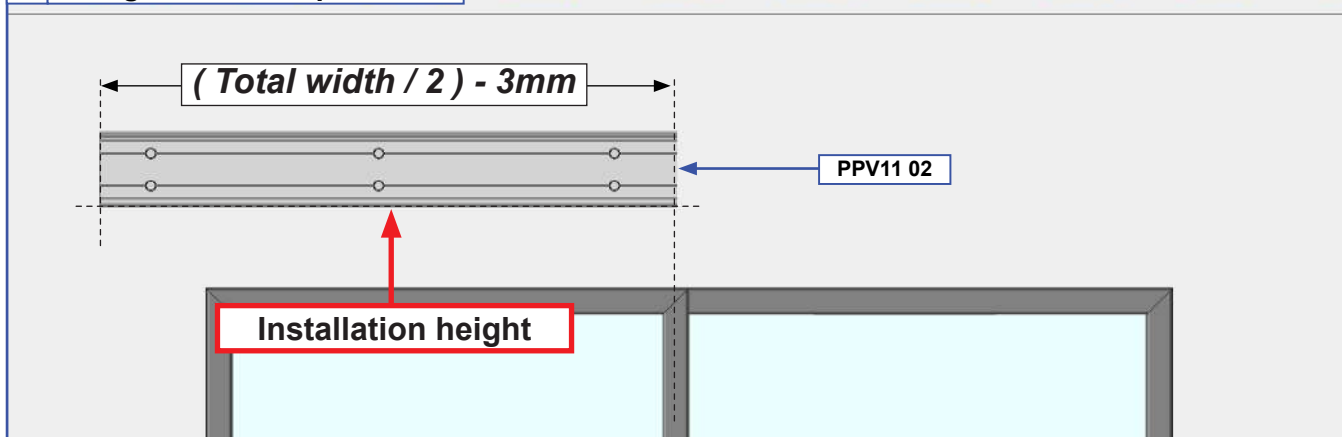


Adapt the fixing to the nature of the wall. Fixing with Ø10 mm screws. Kit of screws and washers not supplied. In the case of installation with a chemical sealing kit, refer to the instructions for use of the product used.

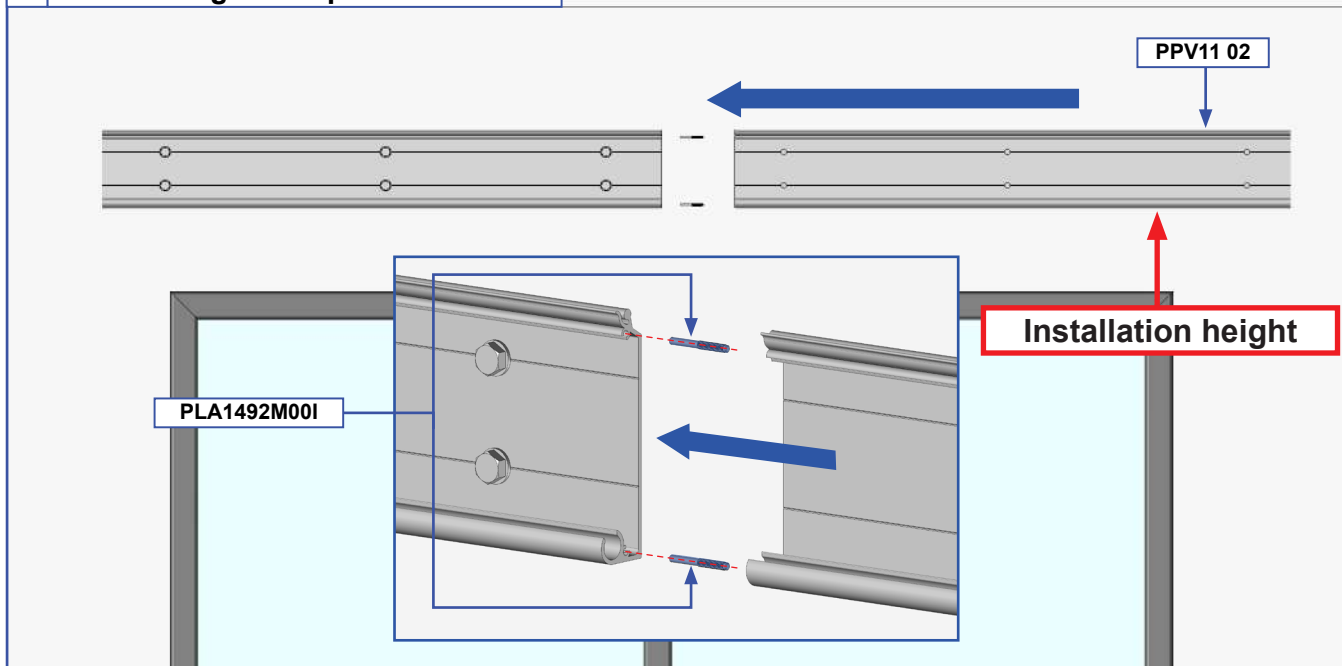
3 Fixing the wall profile. Pergola over 7m wide.

See paragraph 2 on page 5 for marking, drilling and fixing operations.

A Fixing the left wall profile.



B Place the right wall profile.

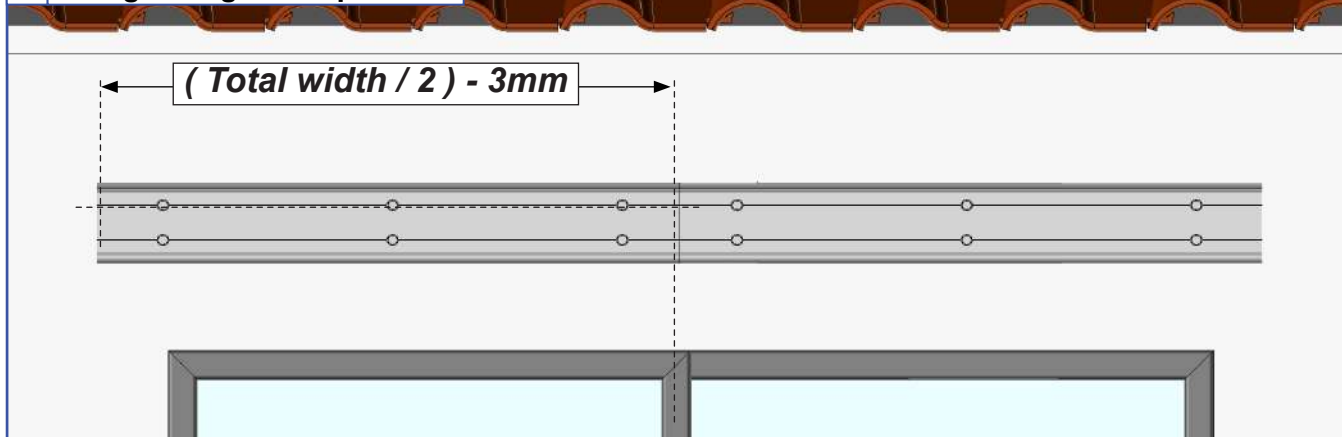


C Mark the position of the holes for the right wall profile.

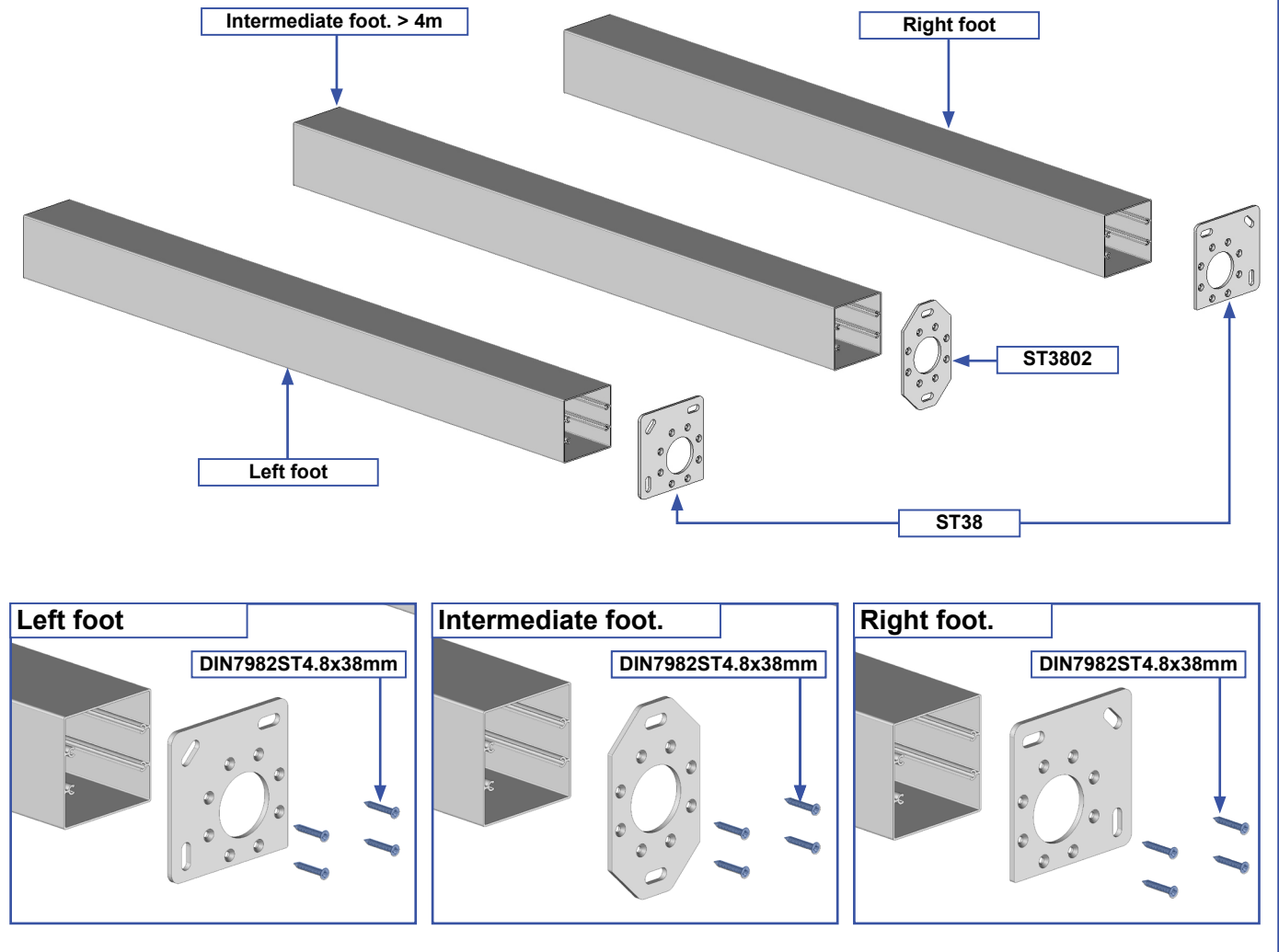
D Remove the right wall profile.

E Drill at the marks for the right wall profile.

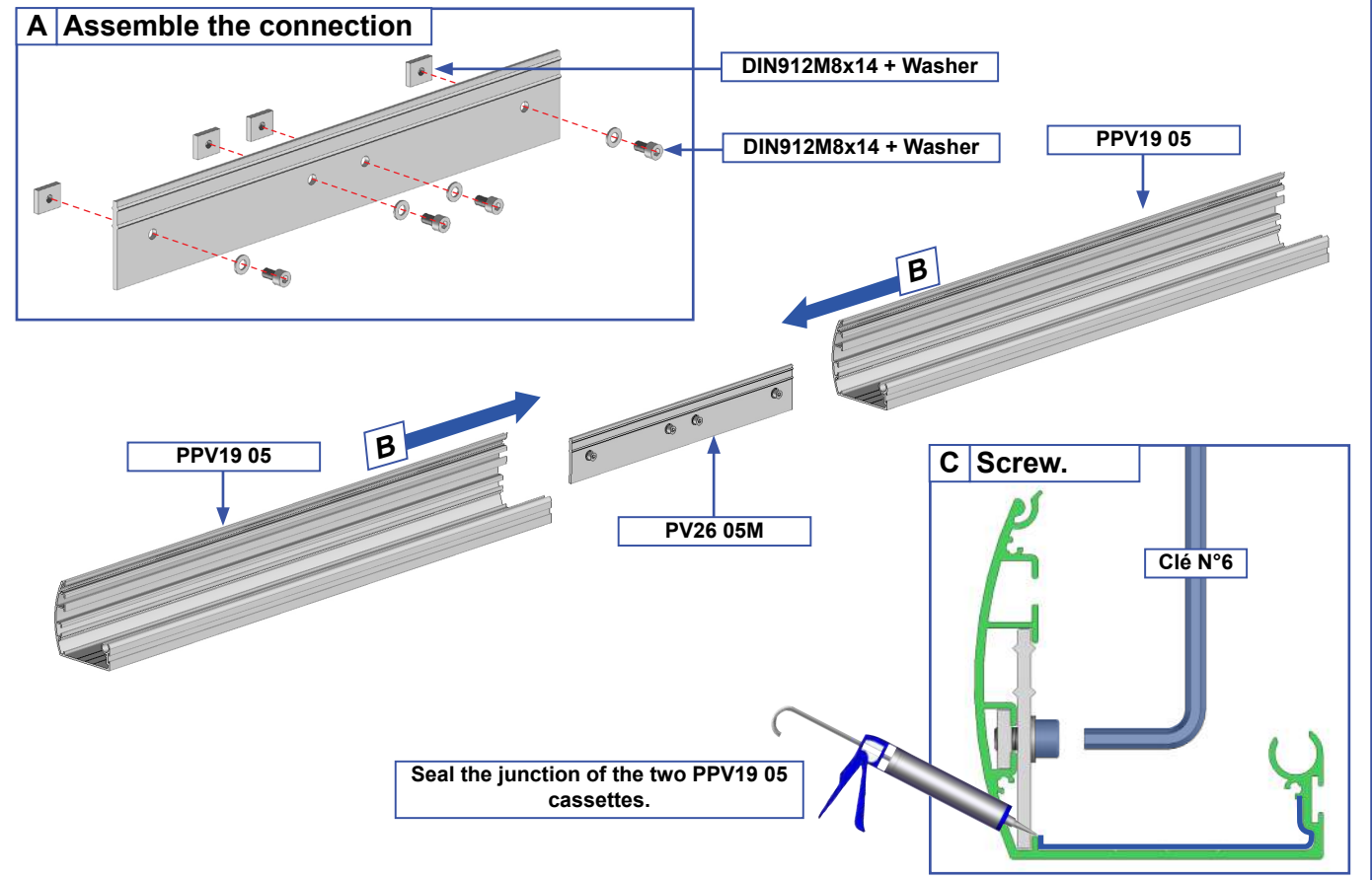
F Fixing the right wall profile.



5 Mount the plates on the feet.

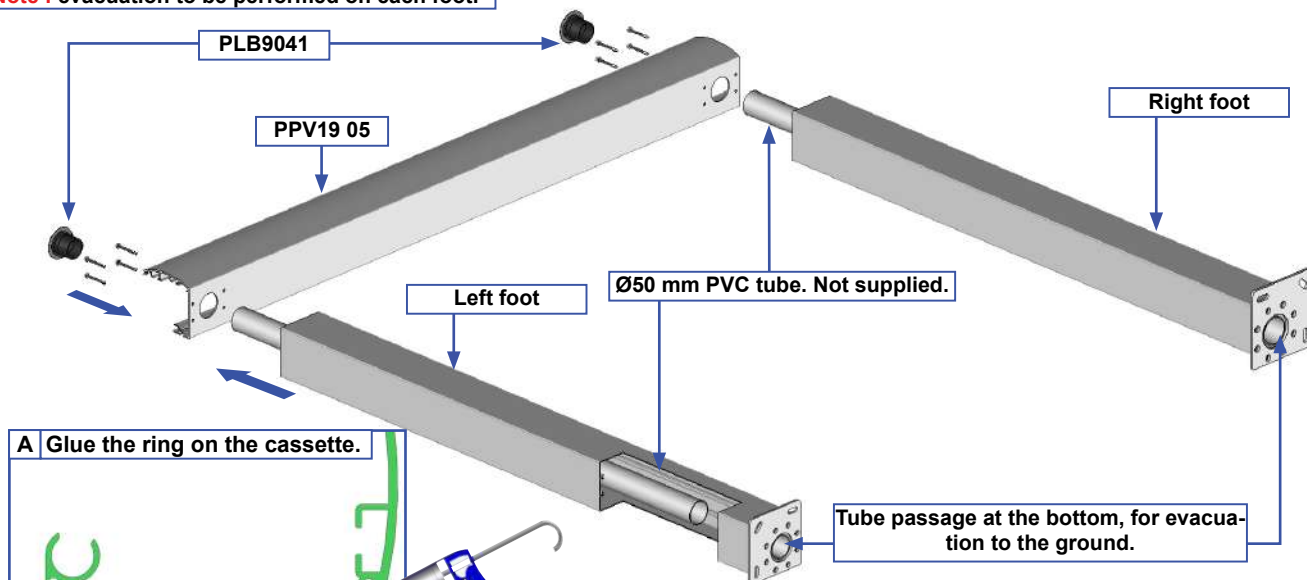


6 Front cassette connection. Pergola over 7m wide only.

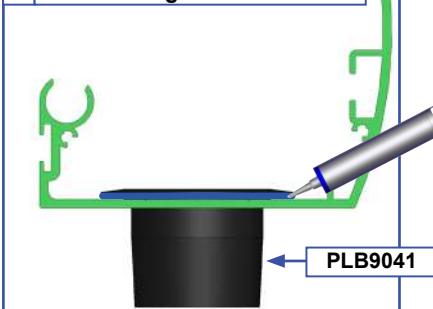


7 Mounting the back cassette.

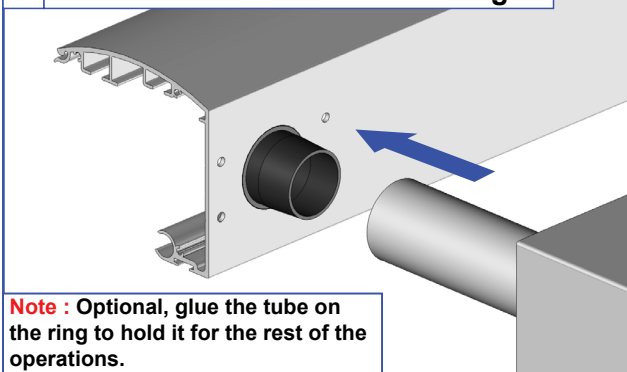
Note : evacuation to be performed on each foot.



A Glue the ring on the cassette.

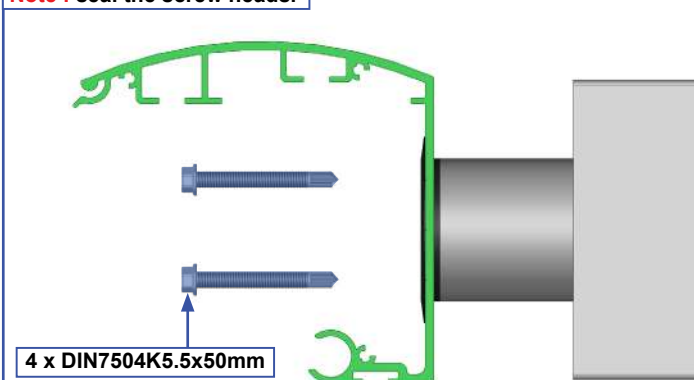


B Guide the PVC tube over the ring.

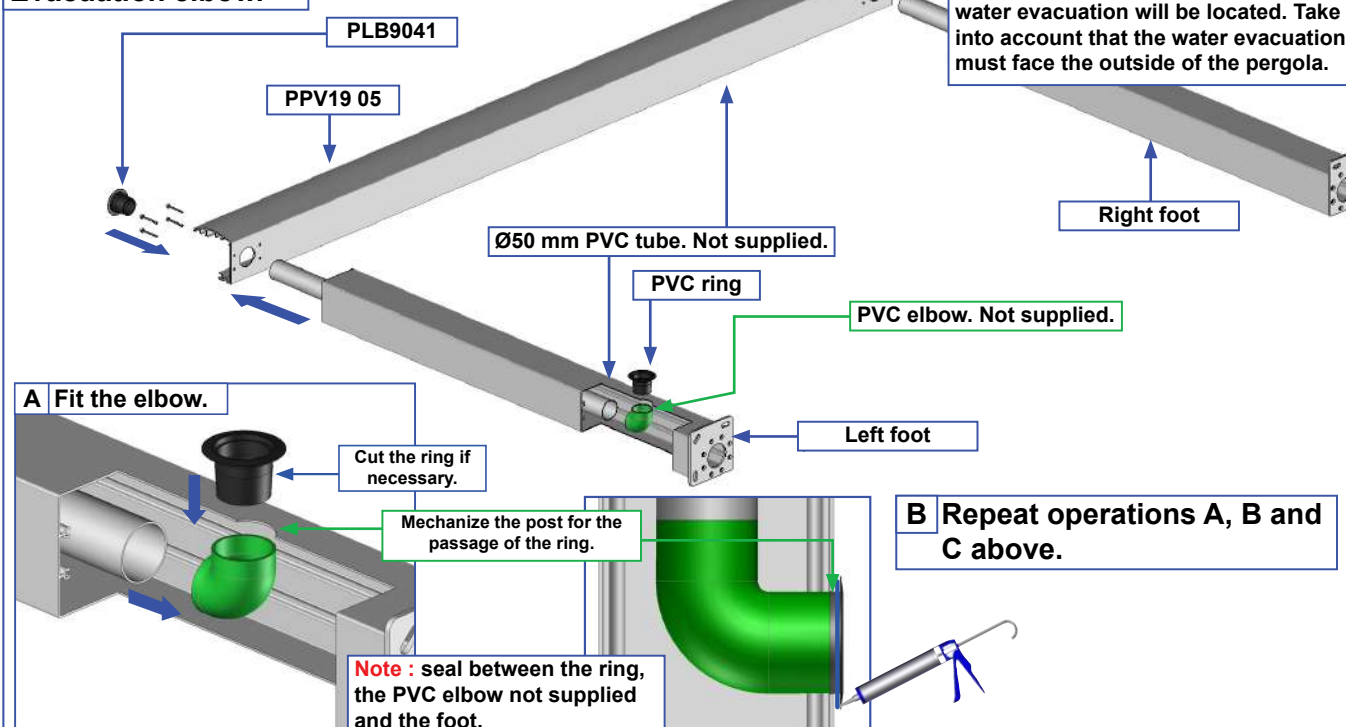


C Attach the post to the front cassette.

Note : seal the screw heads.

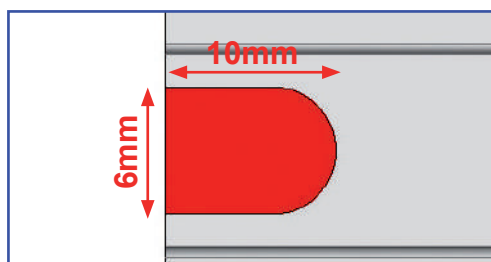


Evacuation elbow.



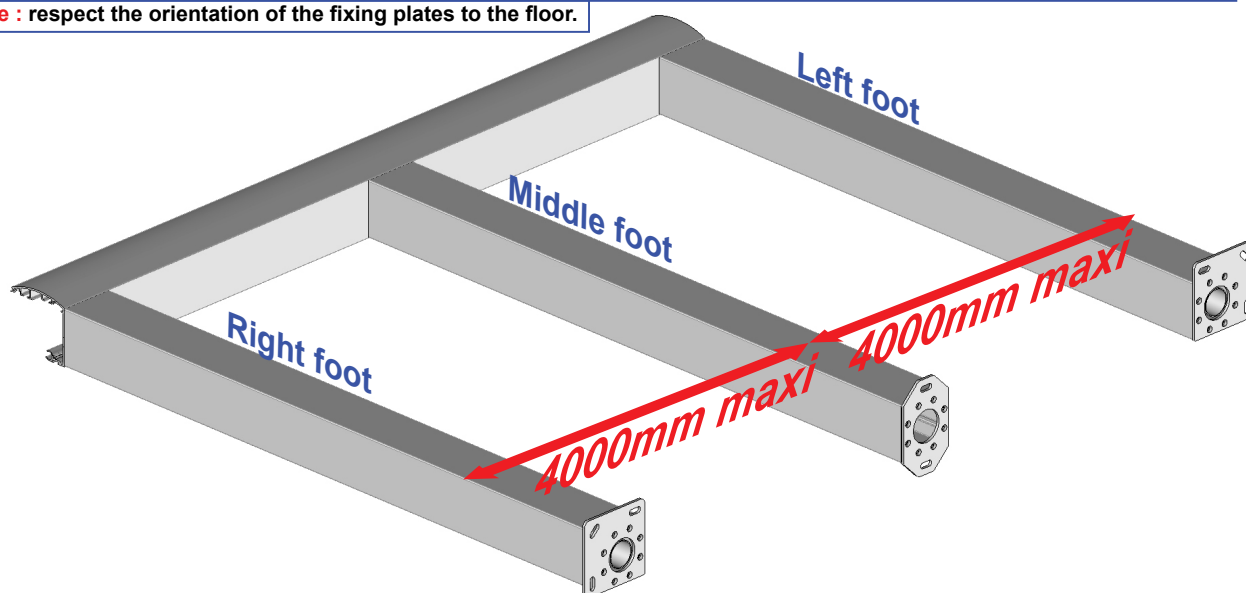
Mechanization of the front cassette, front cassette LED option only.

Note : perform the operation on the motor side. For double span pergola, perform the mechanism at both ends of the front cassette.



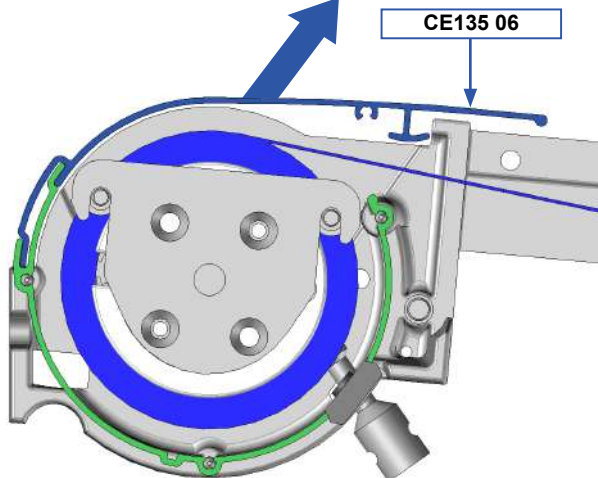
8 Depending on the evacuation chosen, perform the same operations for the middle foot.

Note : respect the orientation of the fixing plates to the floor.

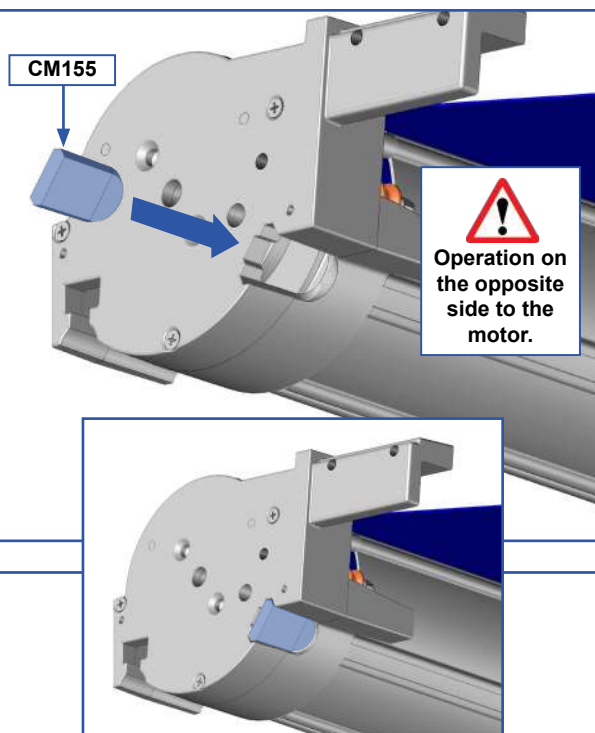


9 Preparation of the Cassette assembly.

A



B



10 Installation of the cassette assembly on the wall profile.

DOUBLE SPAN PERGOLA :
See page 13.

Cassette assembly

A Assemble 2 locking pieces.

DIN912M8x20mm

11mm

B Installing the cassette assembly.

IMPORTANT, hold the cassette until it is screwed on.

Place both caps on the wall profile.

IN POSITION

C Slide the locking pieces.

Note : to carry out on both sides.

IMPORTANT, hold the cassette until it is screwed on.

IN POSITION

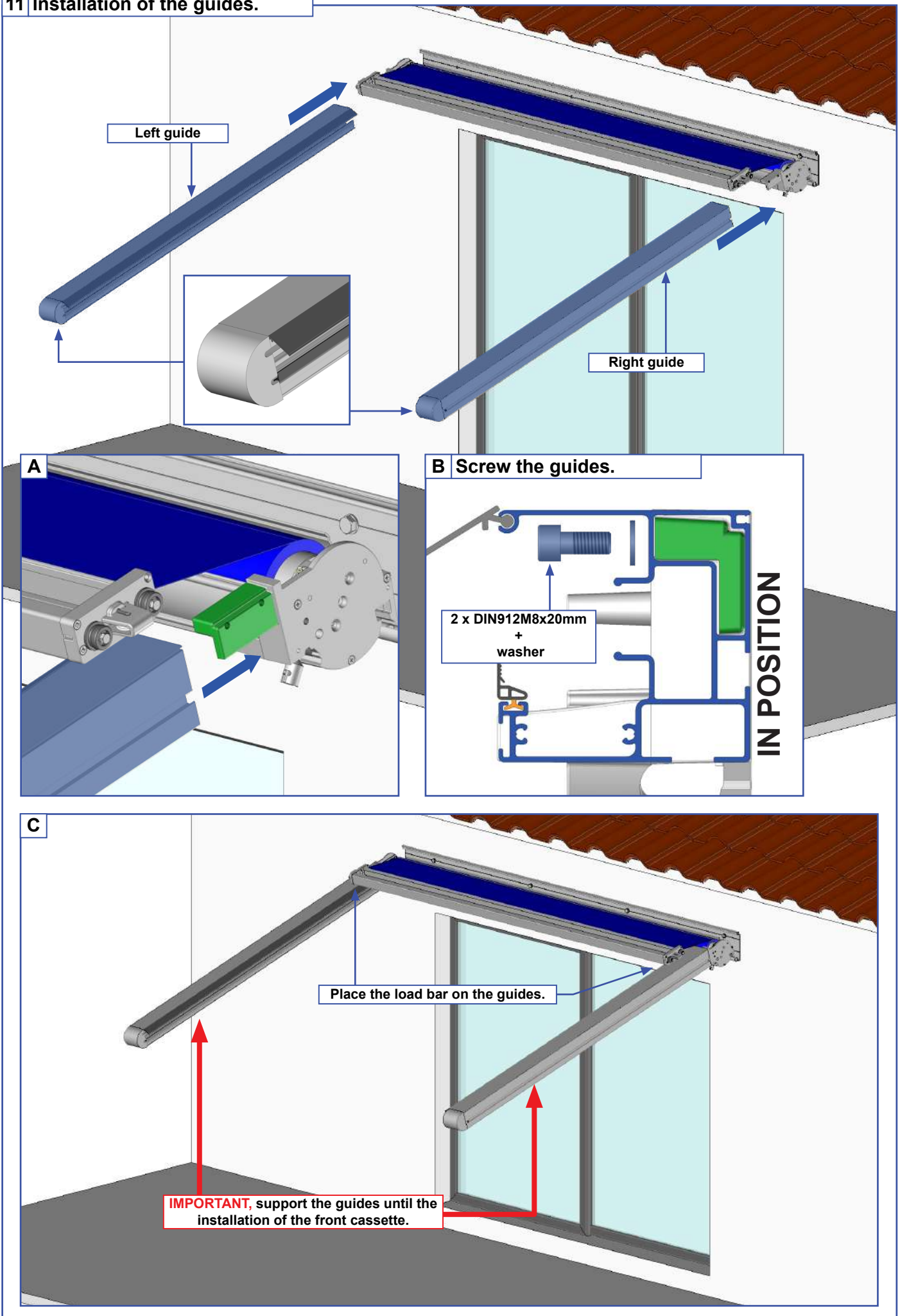
D Screw in the cassette assembly.

Note : to carry out on both sides.

3mm

IMPORTANT, tighten the screw with a # 6 hex wrench from above to hold the cassette assembly.

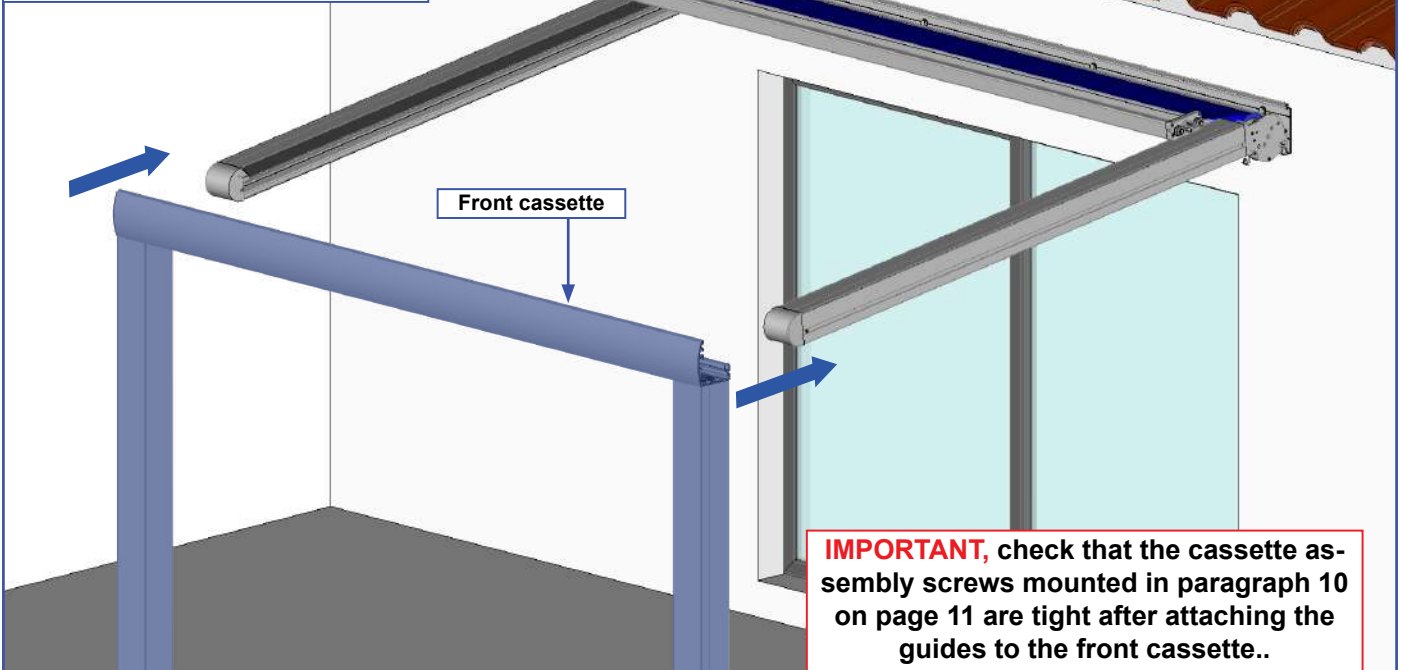
11 Installation of the guides.



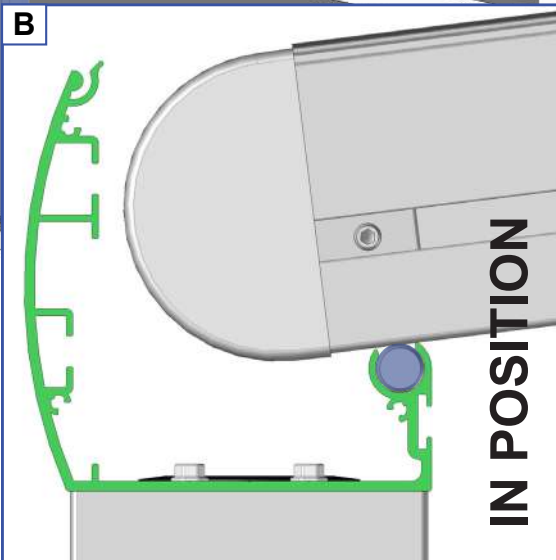
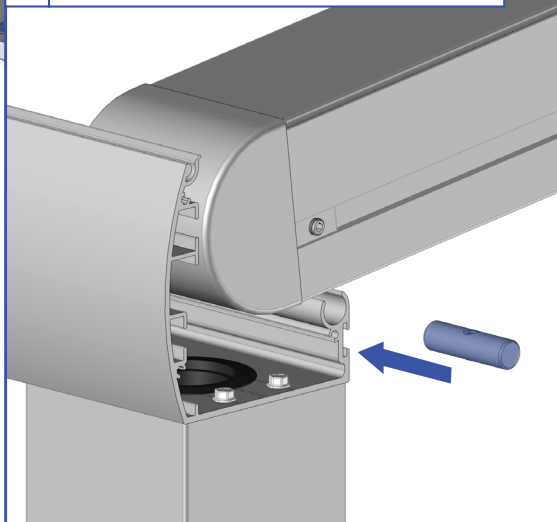
12 Installation of the front cassette.

Note : Loosen the cassette assembly locking screws if necessary to allow the guides to be adjusted.

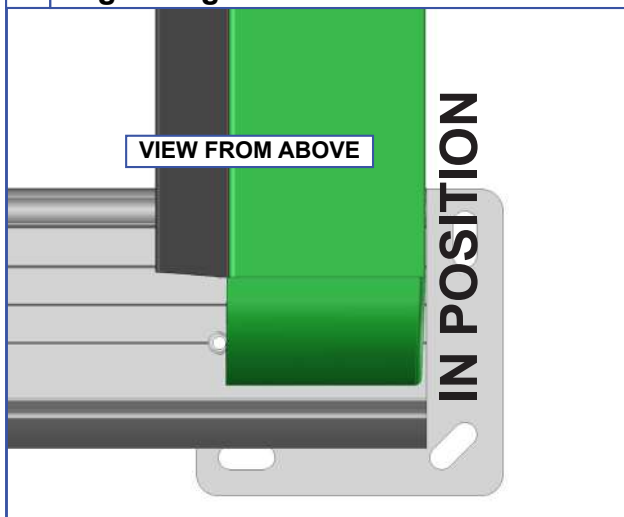
CAUTION : Do not loosen the screws completely.



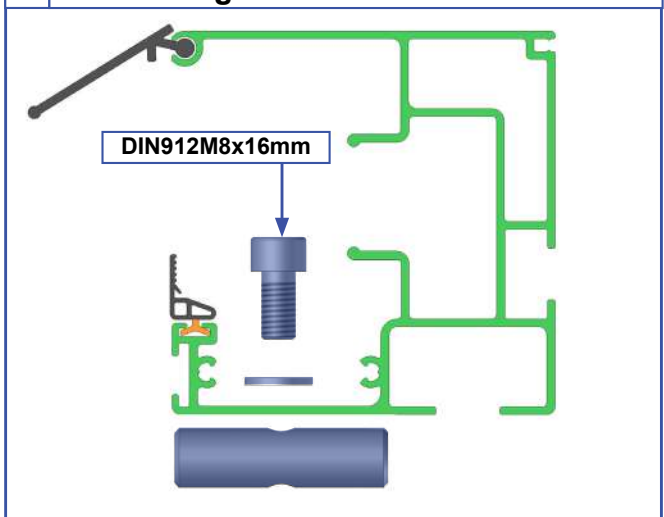
A **Note :** to be carried out on both sides.



C Align the guides on the front cassette.



D Screw the guides to the front cassette.



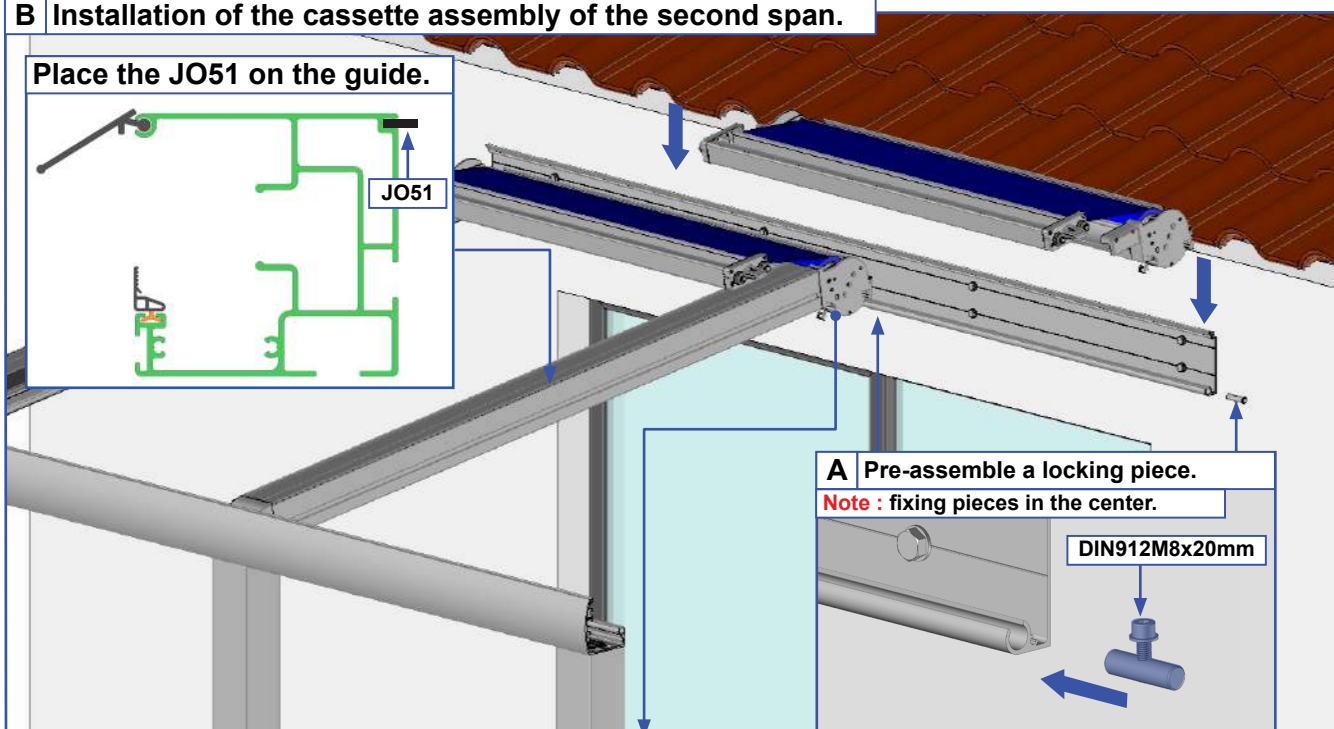
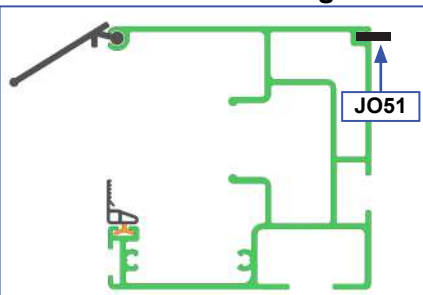
13 Frame assembly. Double span pergola.

A Installation of the first span. Repeat the operations on page 10, page 11 and page 12.



B Installation of the cassette assembly of the second span.

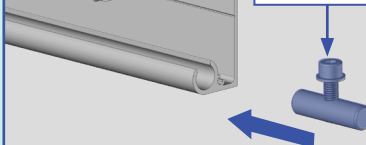
Place the JO51 on the guide.



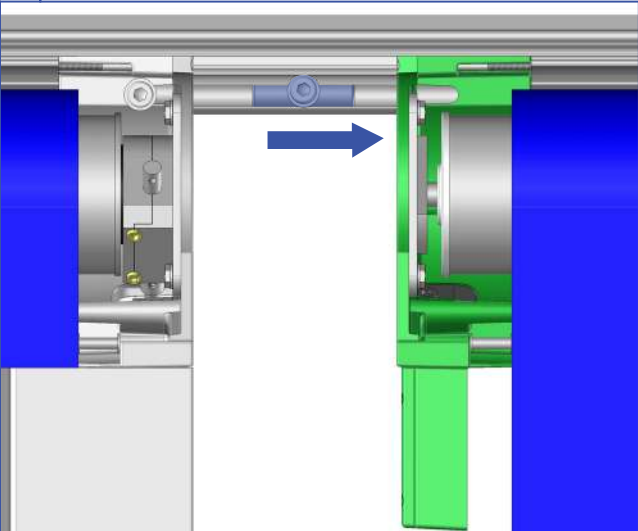
A Pre-assemble a locking piece.

Note : fixing pieces in the center.

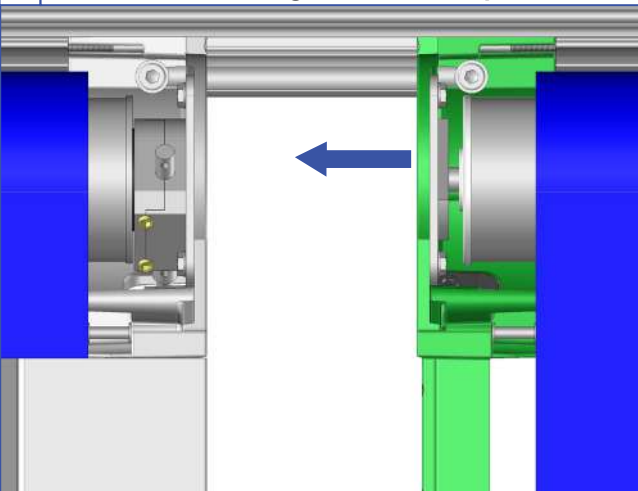
DIN912M8x20mm



B Place the locking pieces on the cap.



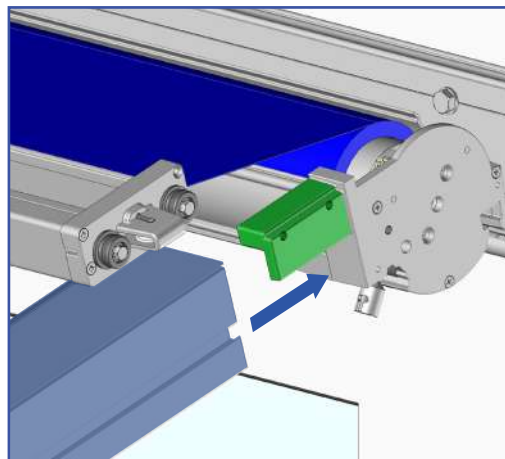
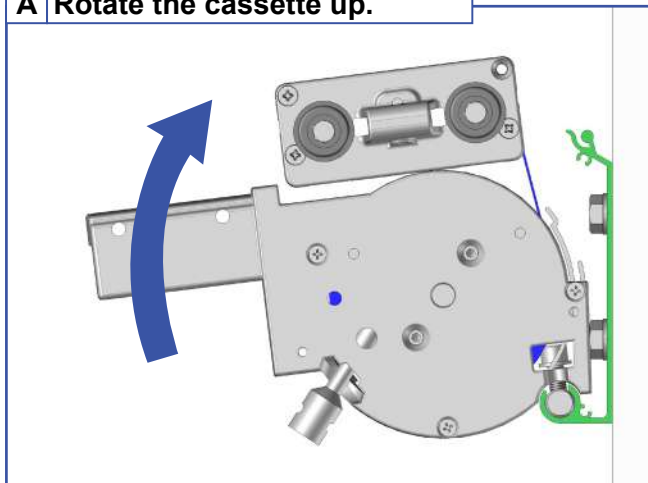
C Place the cassette against the first span.



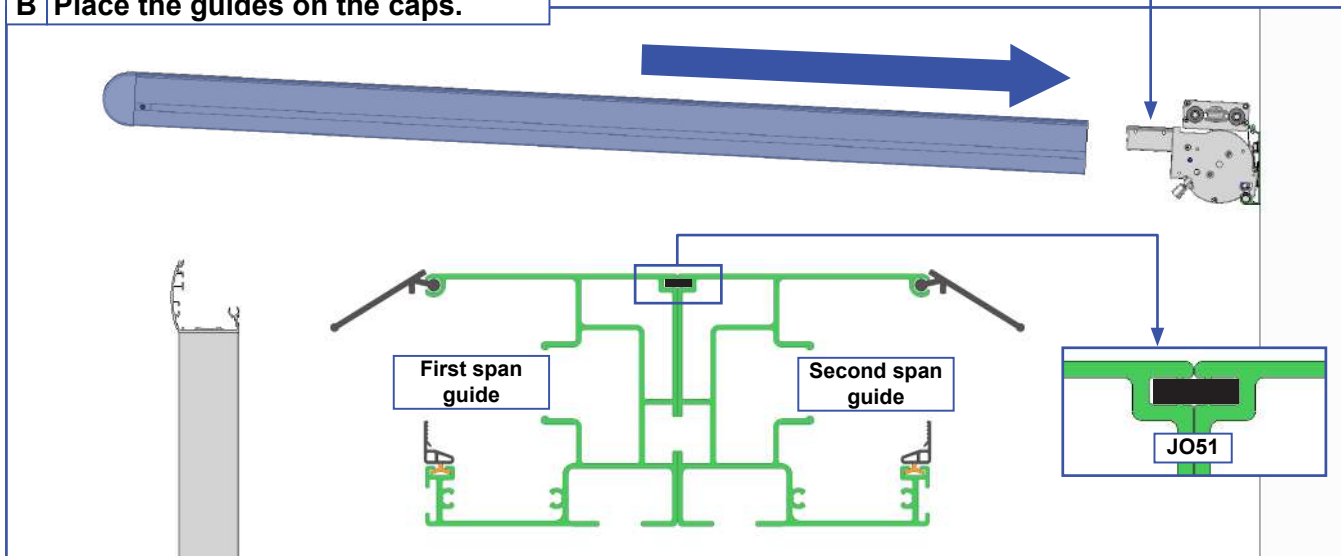
D Repeat the operations on page 10 to secure the second leg cassette assembly.

14 Installation of the guides of the second span. Double span pergola.

A Rotate the cassette up.

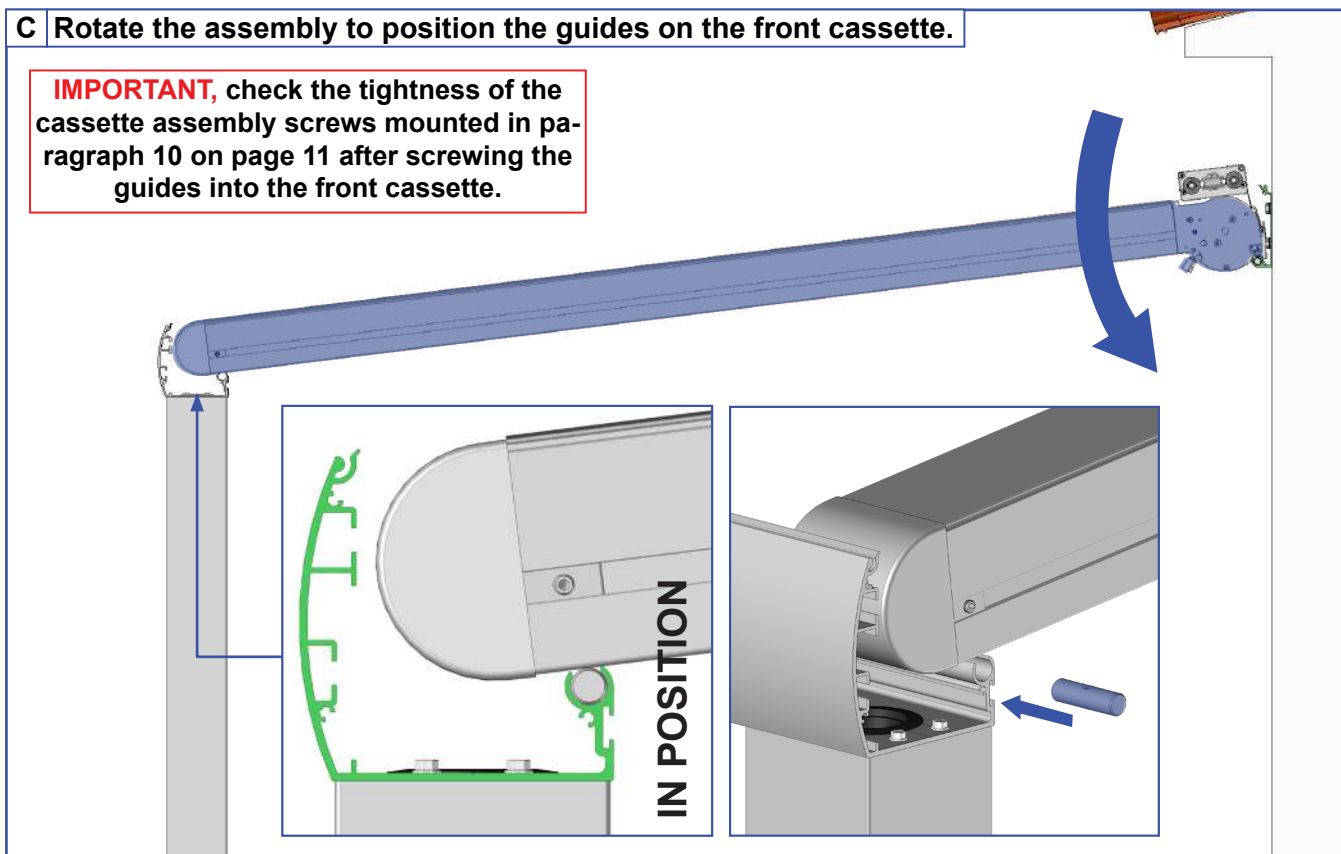


B Place the guides on the caps.

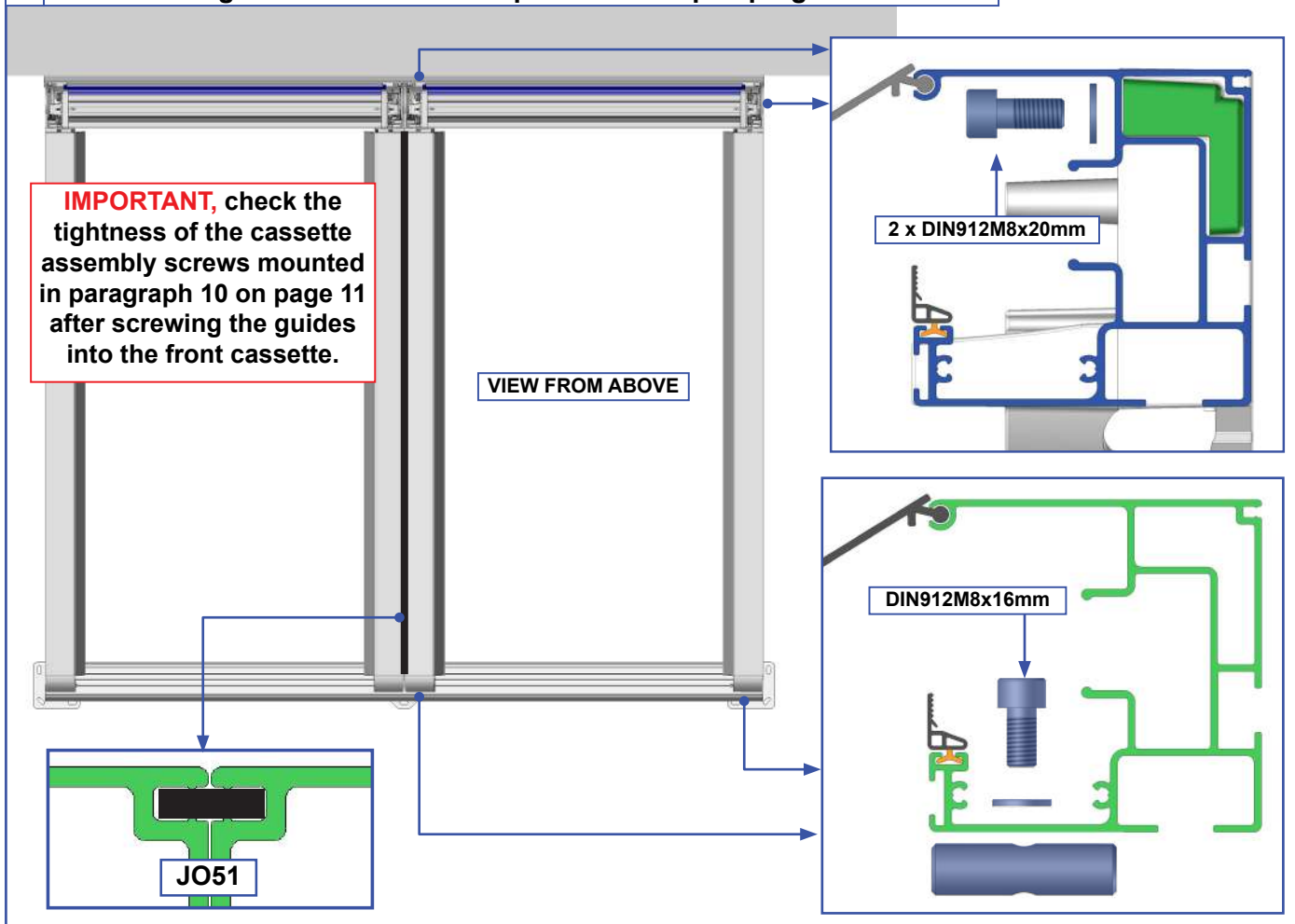


C Rotate the assembly to position the guides on the front cassette.

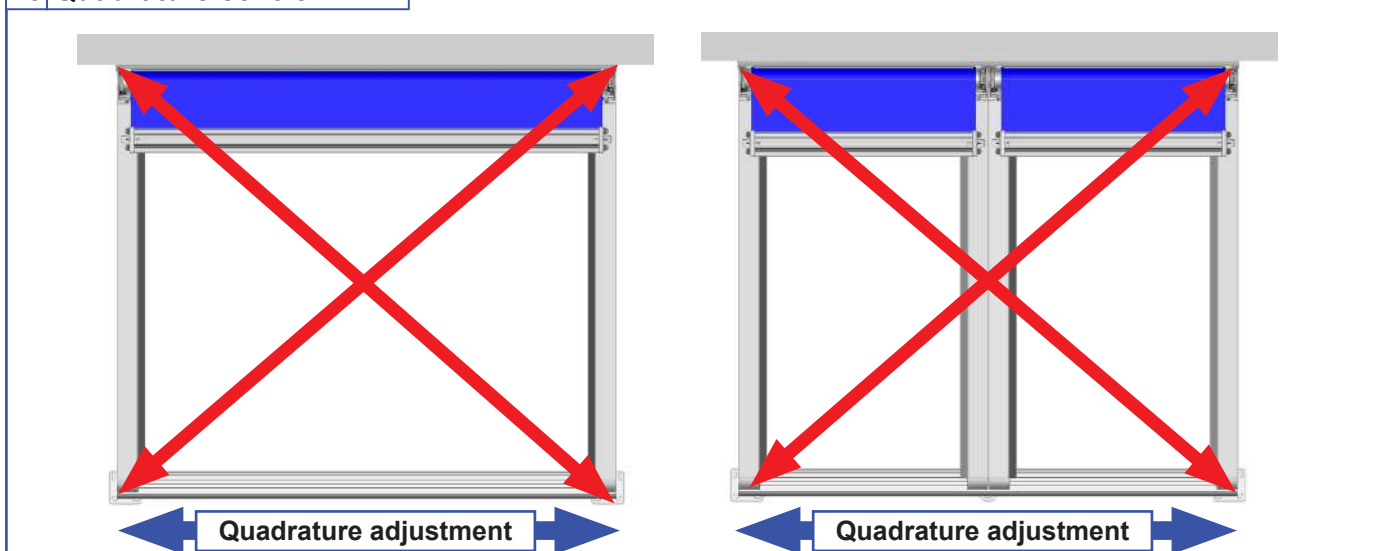
IMPORTANT, check the tightness of the cassette assembly screws mounted in paragraph 10 on page 11 after screwing the guides into the front cassette.



15 Screw in the guides of the second span. Double span pergola.



16 Quadrature control.



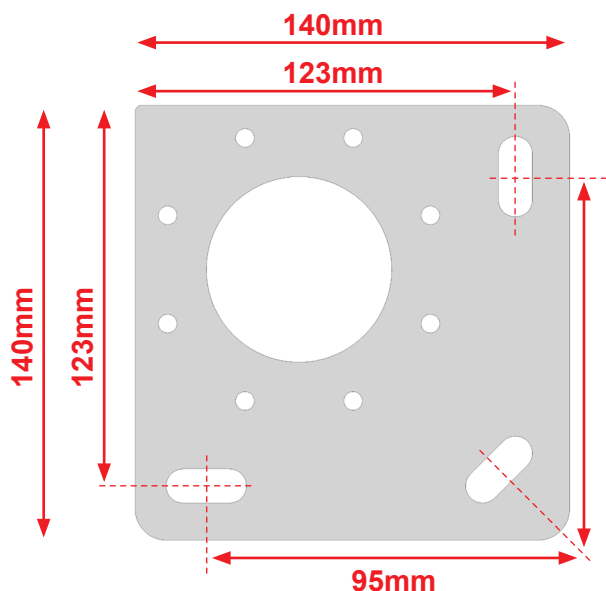
This step is very important :

Before proceeding with the assembly of your pergola, make sure that the diagonals are equal (acceptable tolerance of 5 mm) so that the operation of the system continues correctly.

If the diagonals are not equal :

- 1 - Slightly loosen the caps and guides.
- 2 - Move the front part to correct the diagonals.
- 3 - Tighten the guides.
- 4 - Check the quadrature again.

17 Fixing to the ground.



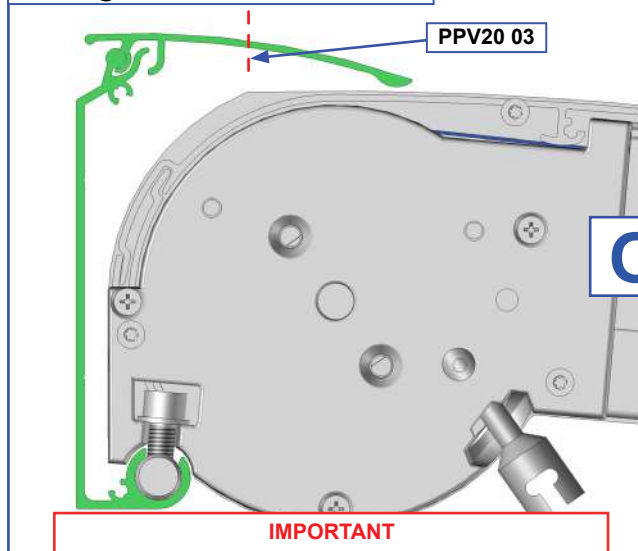
Attach the plates to each previously made concrete base with at least two screws.

Our recommendation: 6 concrete screws Ø8 mm long at least 120 mm. Resistance to extraction 500DaN (500Kg)

In the case of installation with a chemical sealing kit, refer to the instructions for use of the product used.

Motor cable outlet.

Through the cover PPV20 03.



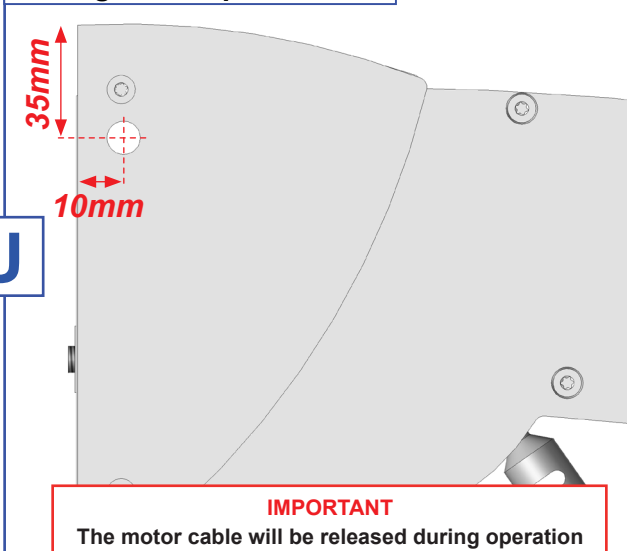
IMPORTANT

The motor cable outlet will be made during operation 31 page 29. Drill the cover PPV20 03 Ø8mm to Ø10mm to make the cable passage.

WARNING,

The cable outlet must be waterproof so as not to damage the motor. Use the waterproof cable grommets supplied or seal them.

Through the cap JPV11 08.



IMPORTANT

The motor cable will be released during operation 32 on page 30. Drill the JPV11 08 Ø8mm to Ø10mm cheek to make the cable passage.

WARNING,

Make an elbow for raising water at the product outlet so as not to damage the engine. Use the waterproof cable grommets supplied or seal them.

18 Motor connection.

- Motorization with switch. See page 17.
- Motorization by remote control. See page 18 et page 19.
- Option of motorization with LED lighting. See the instructions delivered with the automatism. Just make the connection and programming of the motor.

MOTORIZATION

For all motors, the installation must comply with the NFC15-100 standard



ATTENTION

For your safety, before any installation and connection operation, make sure that the power is off (line disconnected).

- Do not spray water on the automatism unit.



CAUTION

- You have purchased an automatism, the connection operations must be carried out by competent persons for a correct installation and binding guarantee.
- Cut off the power before any connection or manipulation of the automatism.
 - Do not allow children to play with the control devices (remote control).
- Check the installation frequently for any poor balance or any signs of wear.
 - Do not use the pergola if it needs to be repaired or adjusted.

SWITCH

Necessary material

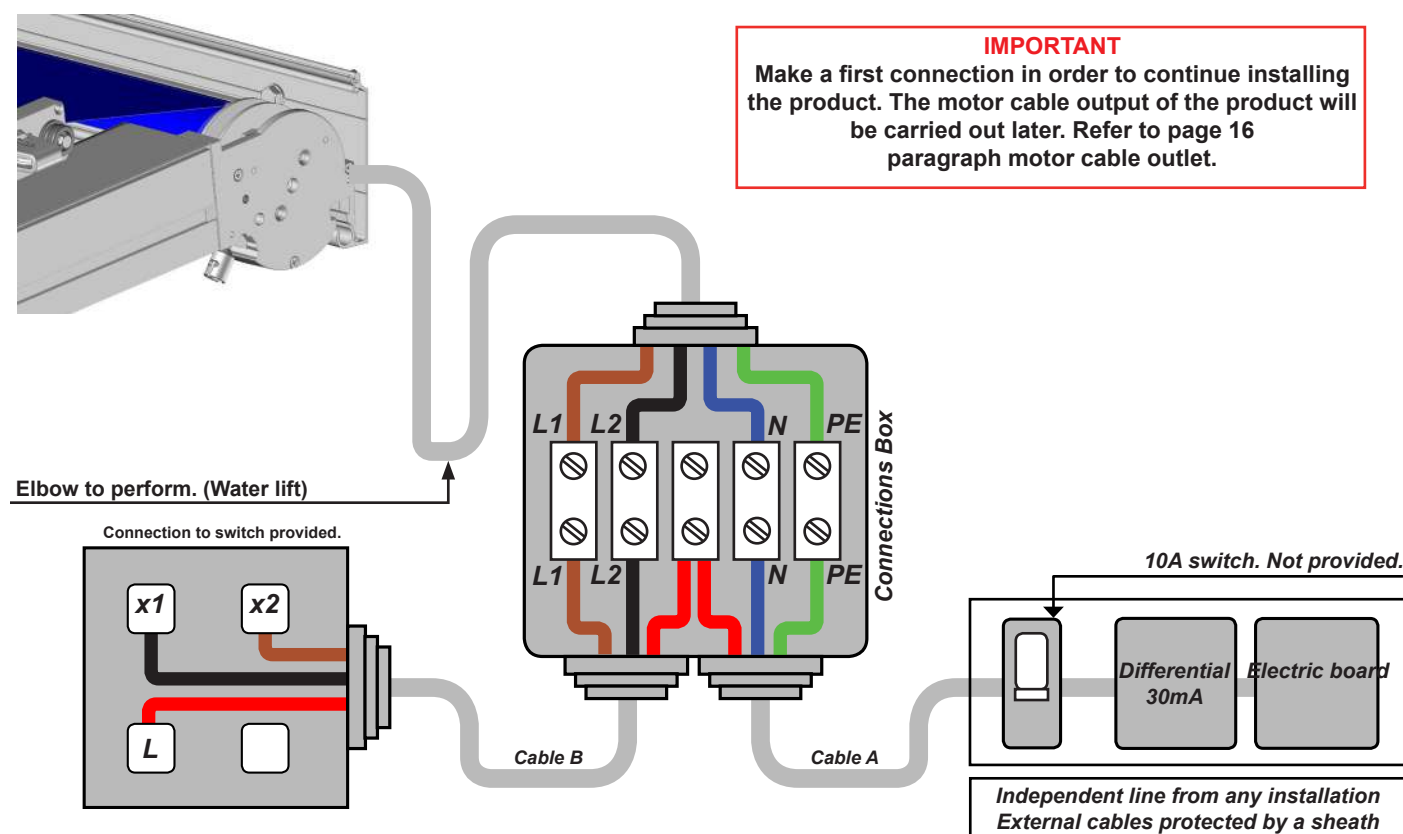
- ▶ Watertight junction box (IP54)
- ▶ Bypass strip
- ▶ Cable (A) 3G 1.5mm² (blue, red, green / yellow)
- ▶ Cable (B) 3G 1.5mm² (black, red, brown)

Material not provided

A - Connect the cables inside the watertight junction box.

B - Close the junction box.

C - Restore power and run a test.



REMOTE CONTROL MOTORIZATION

Necessary material

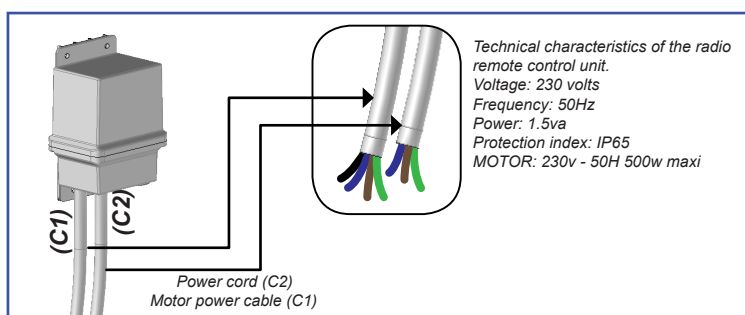
- ▶ 2 watertight junction boxes (IP54)
- ▶ Bypass strip
- ▶ Cable (A) 3G 1.5mm² (blue, red, green / yellow)
- ▶ Cable (B) 3G 1.5mm² (black, red, brown)

Material not provided

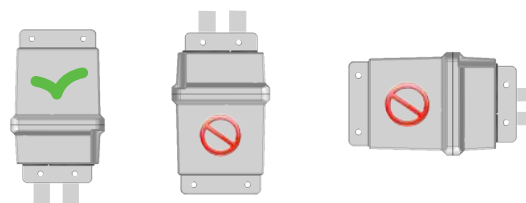
CAUTION

Before any installation, determine in relation to the location of your store:

- The location of your automation, this location must allow the automation to pick up signals in order to ensure maximum sensitivity of the control.
- The fixing of the electronic card housing must be vertical and protected from bad weather.



Fixing the box: 4 Ø2.5mm screws.
 The housing must be fixed vertically and protected from the elements.

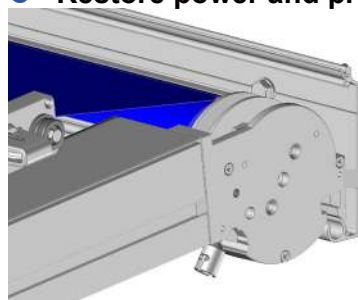


Never open the electronic box. (Cancellation of warranty)

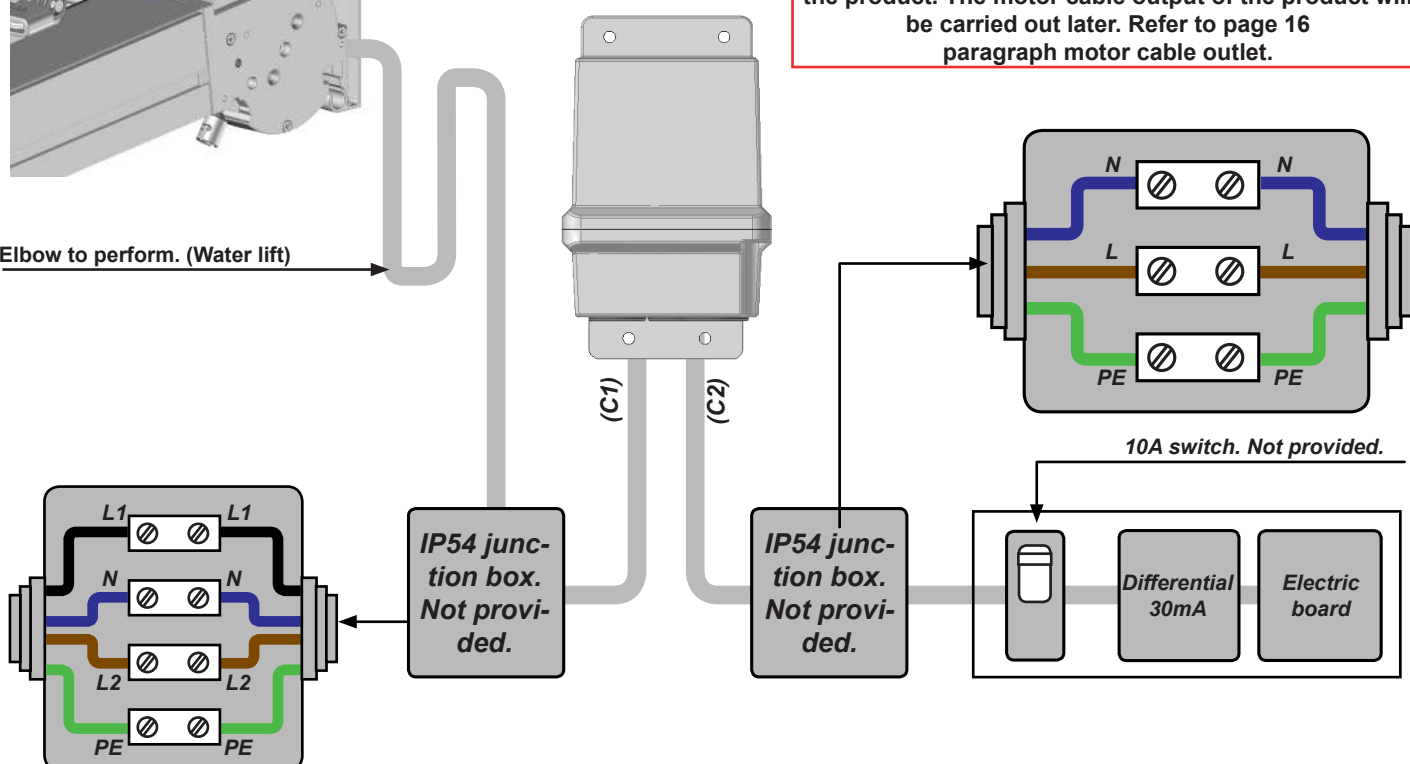
A - Connect the cables inside the watertight junction box.

B - Close the junction box.

C - Restore power and program the motor.

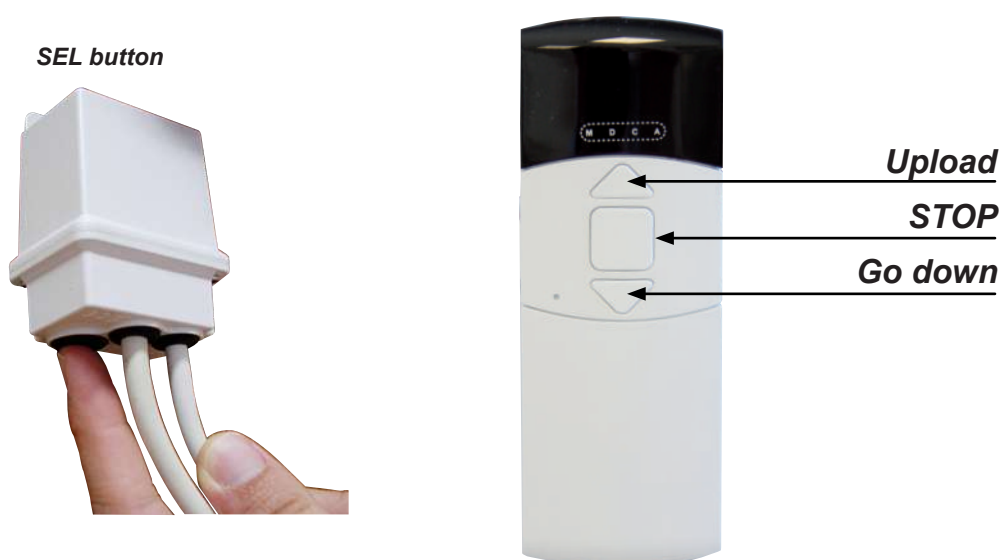


Elbow to perform. (Water lift)



REMOTE CONTROL MOTORIZATION PROGRAMMING

- A** - Put the supplied batteries in the remote control.
- B** - Turn on the electronic unit, the unit emits 2 consecutive beeps.
- C** - Briefly press the «SEL» key, the electronic unit emits 3 consecutive beeps.
- D** - Press and hold the «up» button on the remote control until the unit beeps, then release the button, the unit will beep 4 times to confirm the end of programming.
- E** - Check that the direction of rotation of the fabric corresponds to the buttons on the remote control. If not, reverse the brown wires in the connector. Be careful to turn off the power before reversing the cables.



Thermal protection

The motor enters thermal protection after 2 successive ups and downs.

Clear memory

To do it only if you have scheduling problems. Press and hold the «SEL» button until you hear a continuous beep. Release the «SEL» button, the frame emits 5 consecutive beeps to confirm the memory total erasure. Then resume programming.

Declaration of conformity

TELCO declares that the AUTOMOPRO03 product complies with the directives: 99/5 / EC - 73/23 / EC - 89/336 / EC

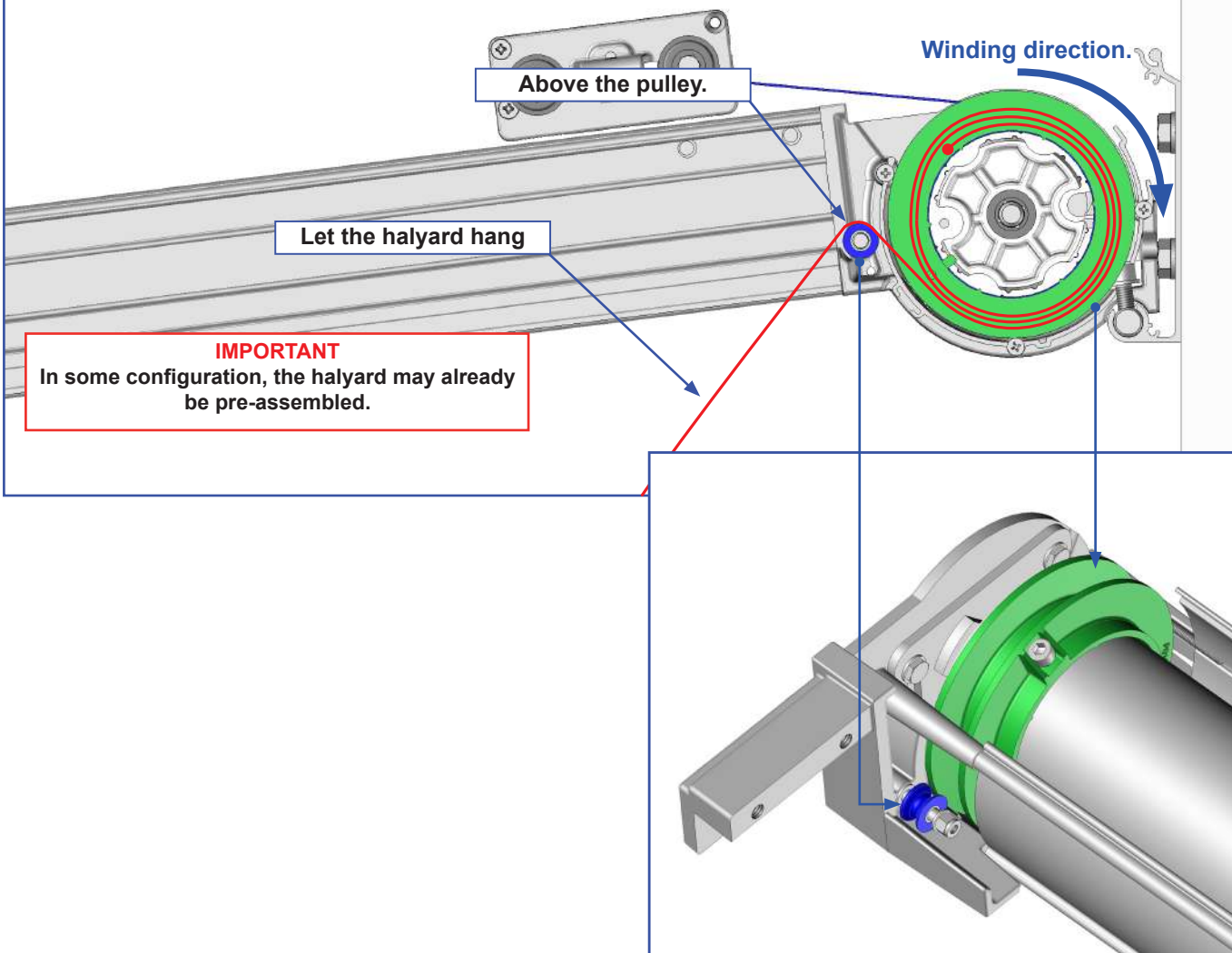


19	Install the halyard of the first span.
----	--

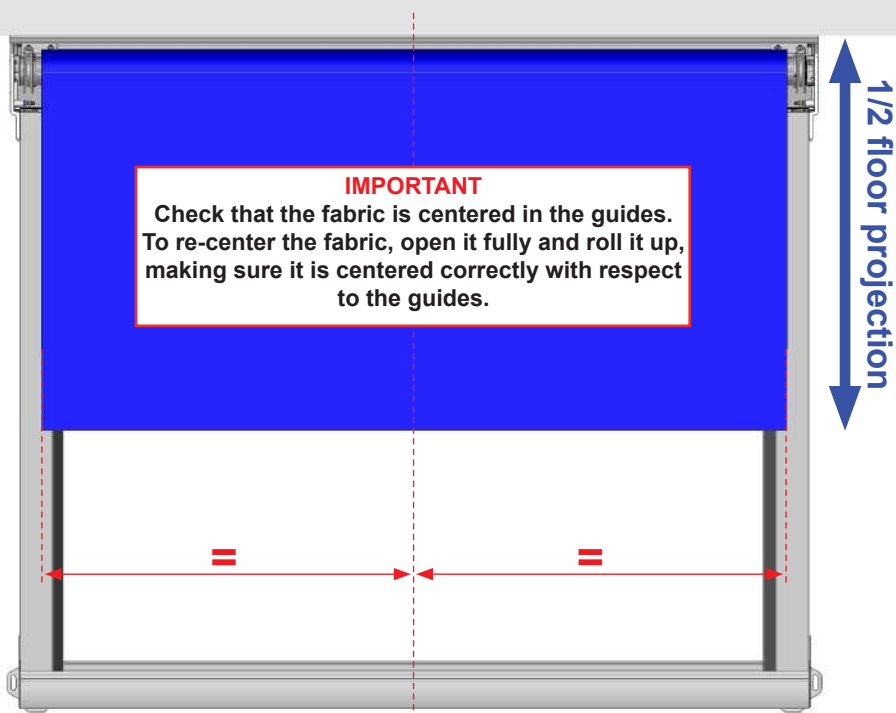
Note : it will be done on the right guide and on the left guide of the first span.

Halyard length = 4 x total projection

Make 3 turns of the halyard around the pulley. Use the hole in the pulley to secure the halyard with a knot.



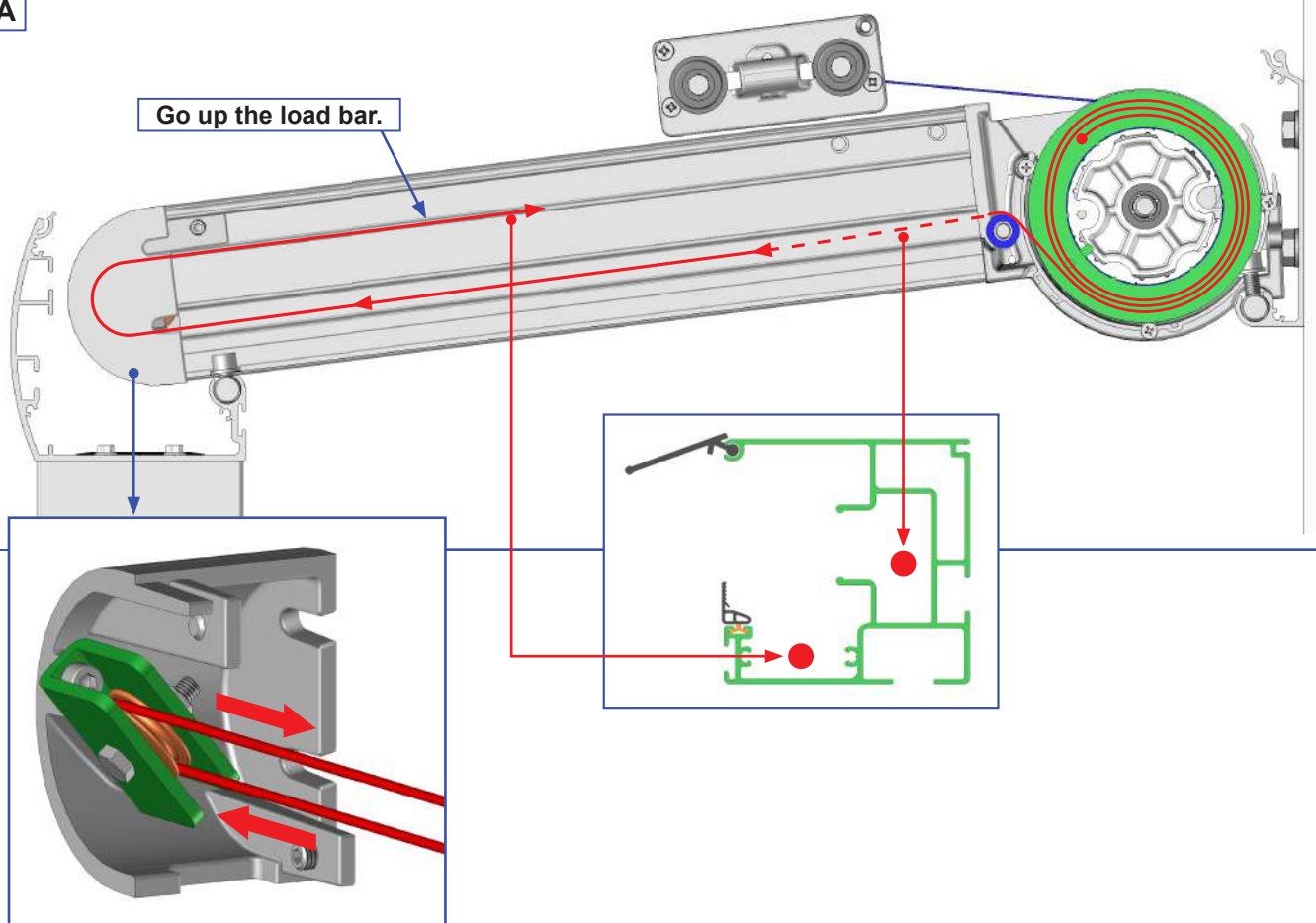
20	Open the tarp.
----	----------------



21 Guide the halyard on the return pulley.

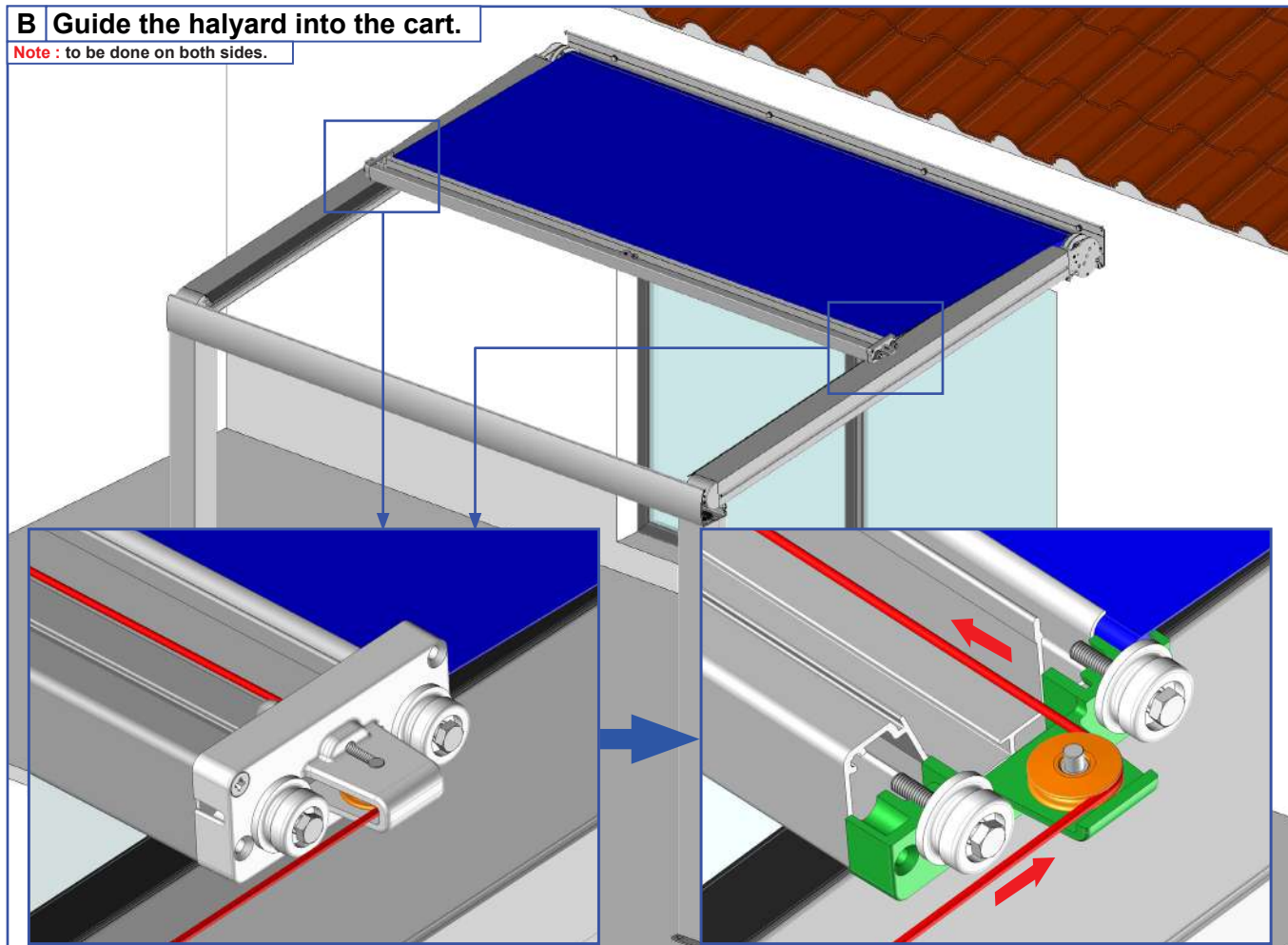
Note : it will be done on the right guide and on the left guide of the first span.

A

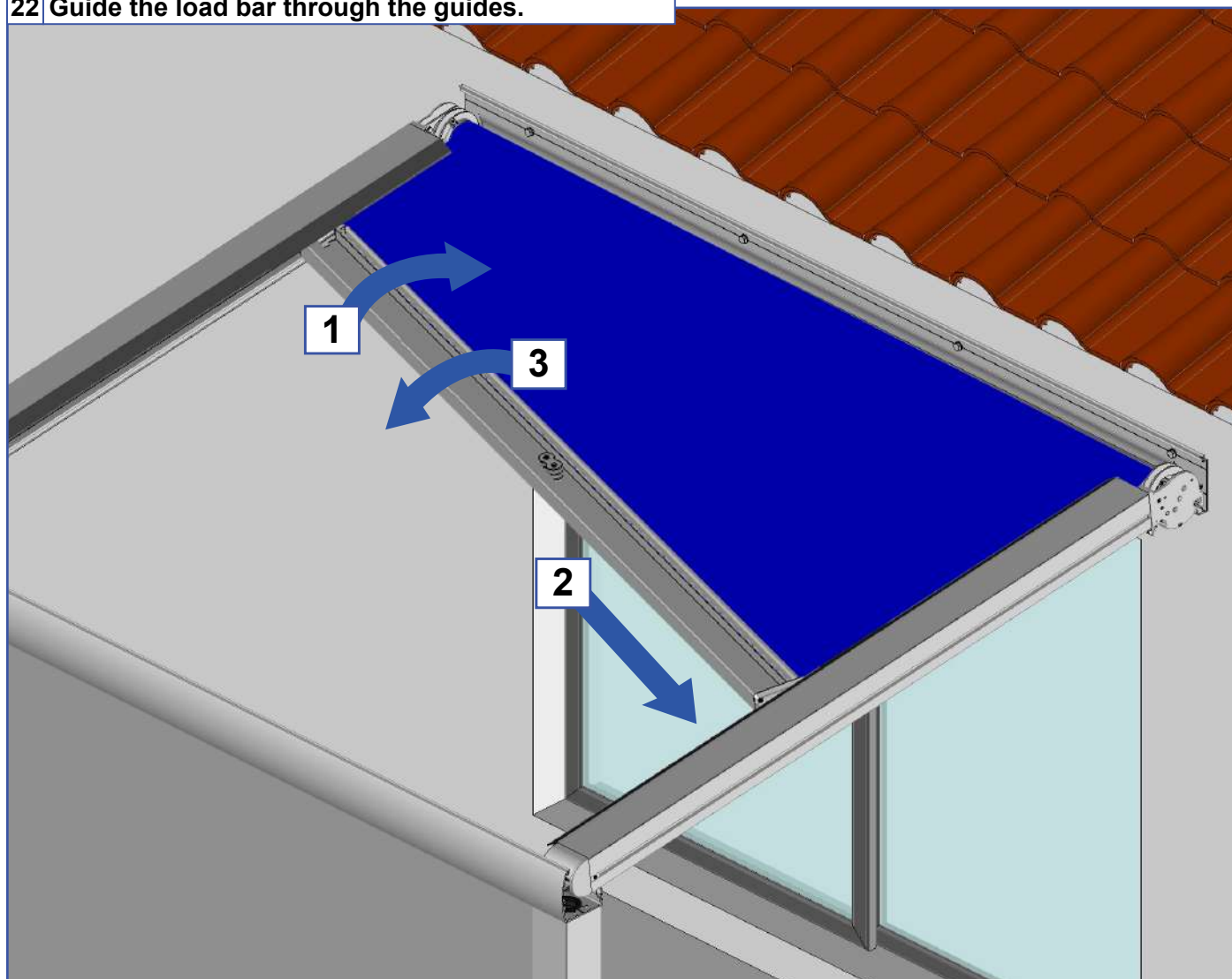


B Guide the halyard into the cart.

Note : to be done on both sides.



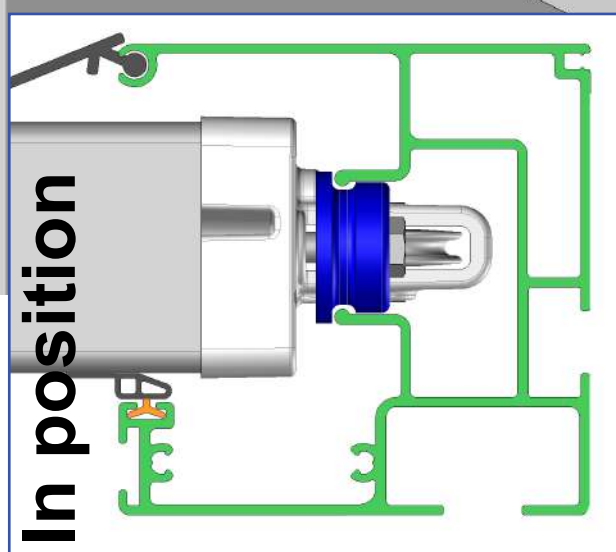
22 Guide the load bar through the guides.



1 Angle the load bar.

2 Fit in a guide.

3 Engage in the other guide with a reverse rotation movement to the first one.



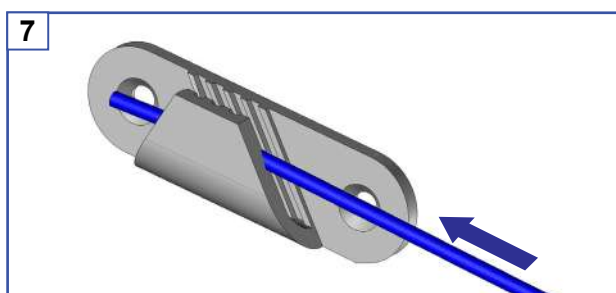
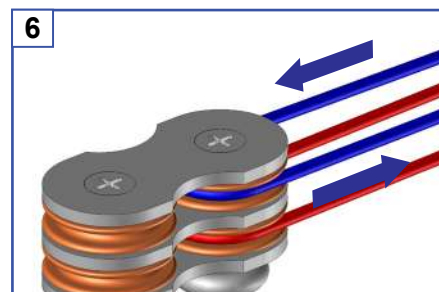
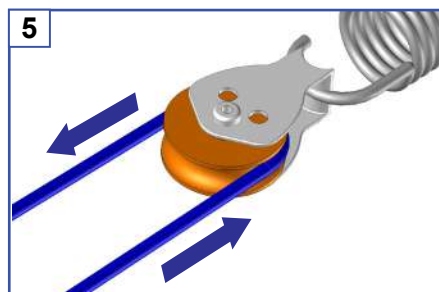
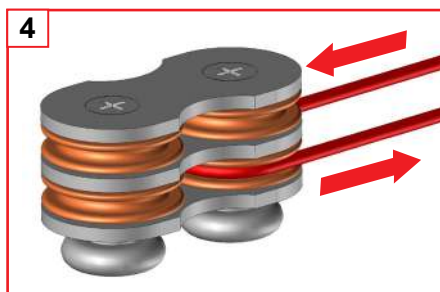
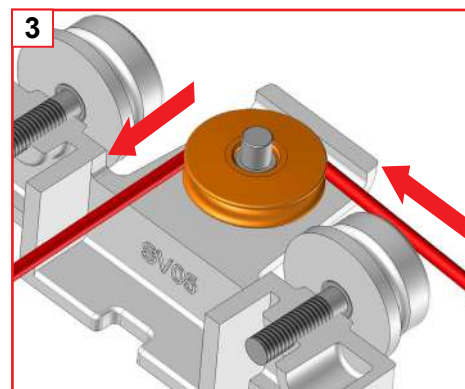
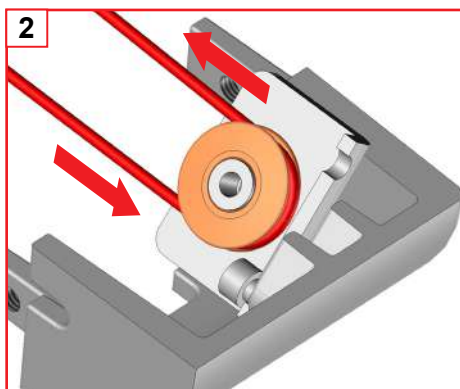
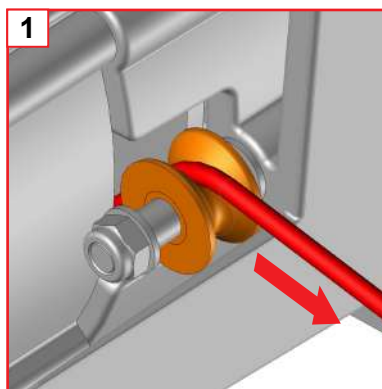
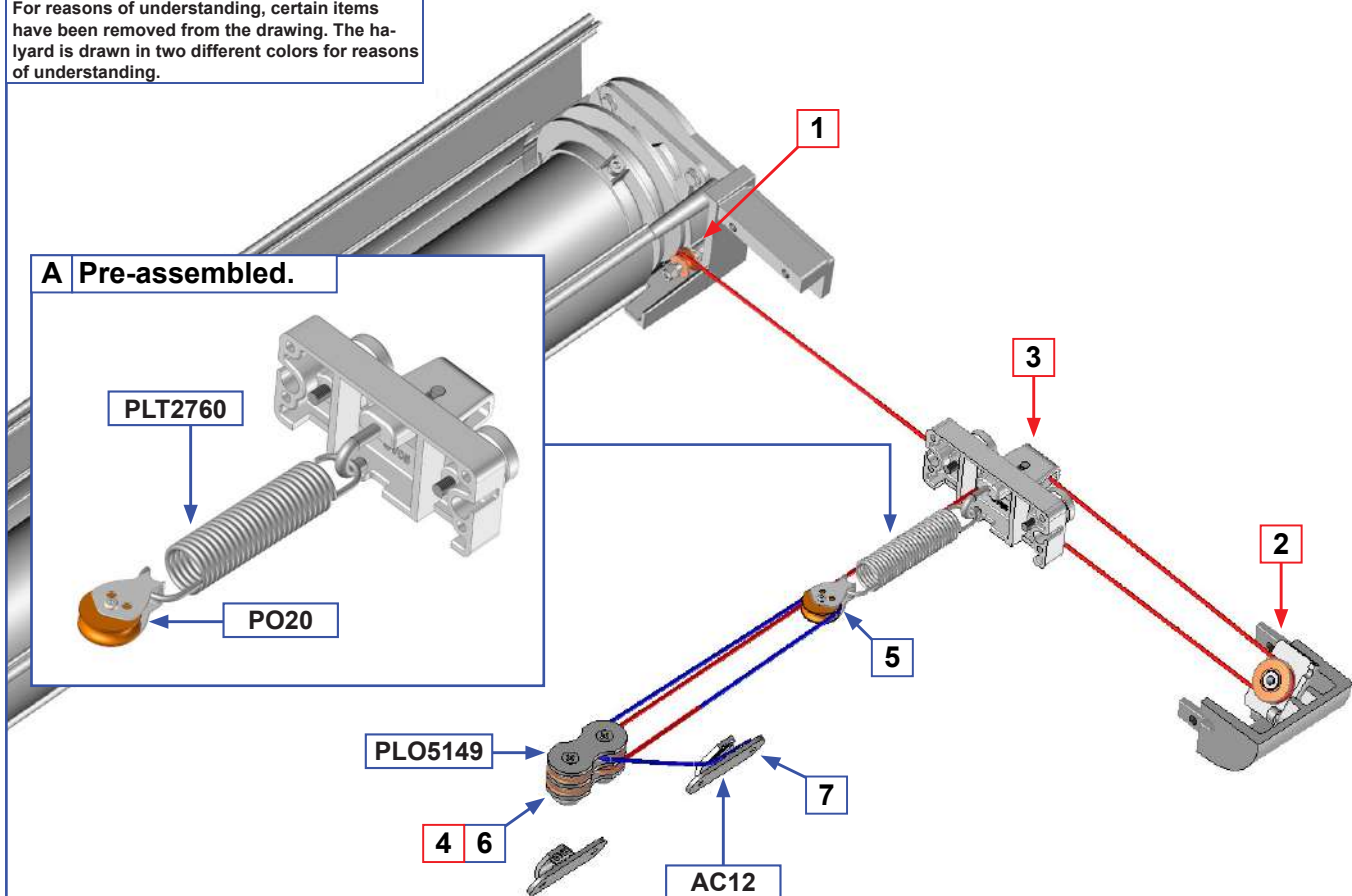
4 Manually slide the load bar along the guides to validate the movement.

23 Cable routing.

Note : do on both sides.

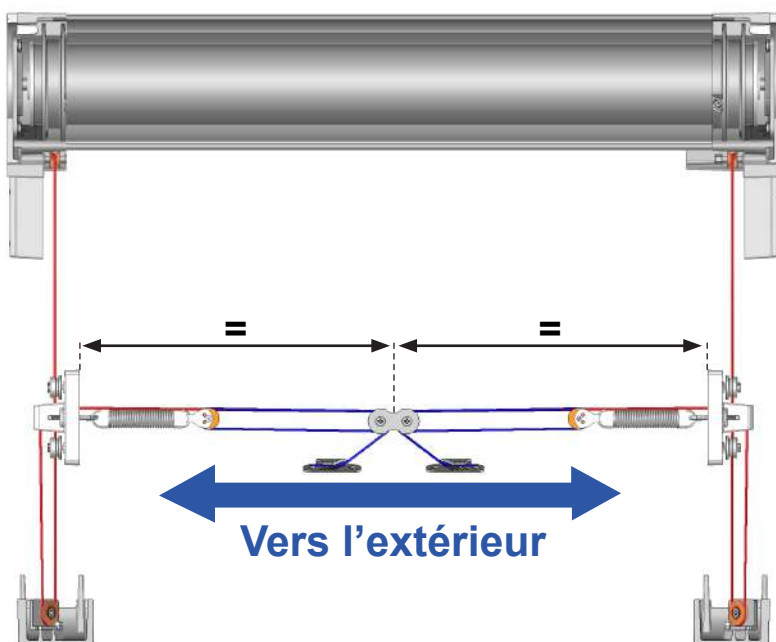
For reasons of understanding, certain items have been removed from the drawing. The halyard is drawn in two different colors for reasons of understanding.

A Pre-assembled.



24 Fabric tension.

A Realice a first tension.

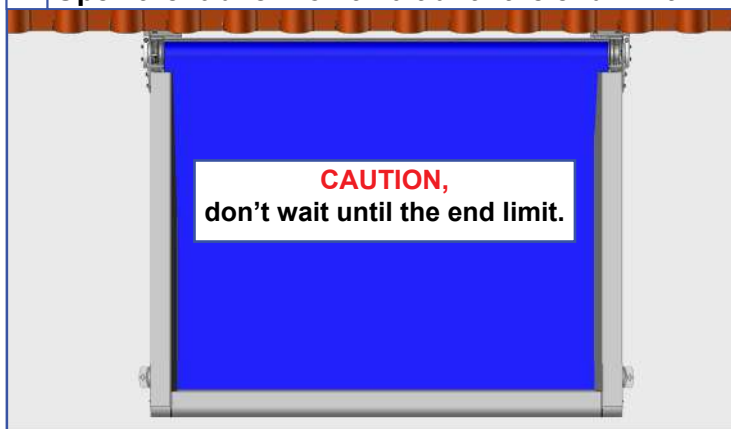


1 - Pull the halyards out and hang them on their respective rope stop, AC12.

2 - The tension must be identical on both sides. Check that the PLO5149 double pulley is centered in relation to the load bar.

3 - Check the halyard route and make sure the halyard is correctly guided on the pulleys.

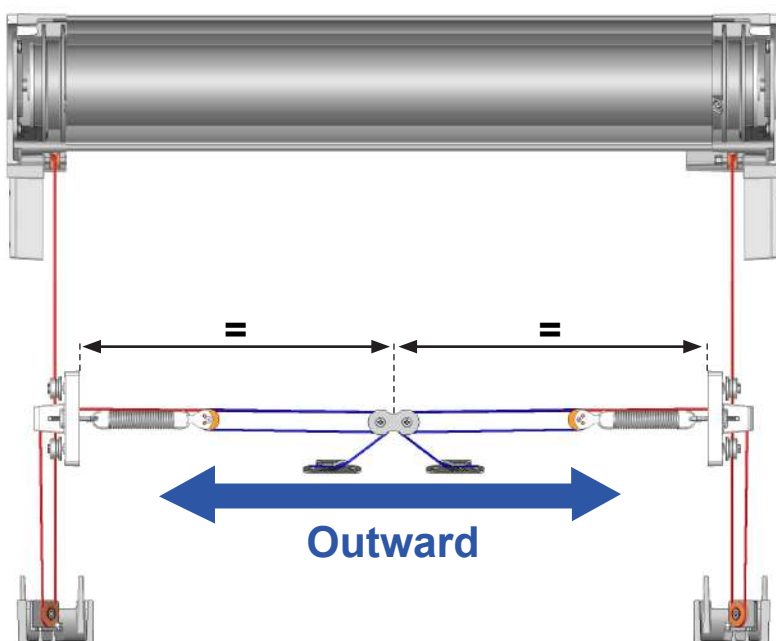
B Open the fabric. Don't wait until the end limit.



C Close the fabric again.



D Realice a second tension.



1 - Pull the halyards out and hang them on their respective rope stop, AC12.

2 - The tension must be identical on both sides. Check that the PLO5149 double pulley is centered in relation to the load bar.

3 - Repeat an opening and closing cycle.

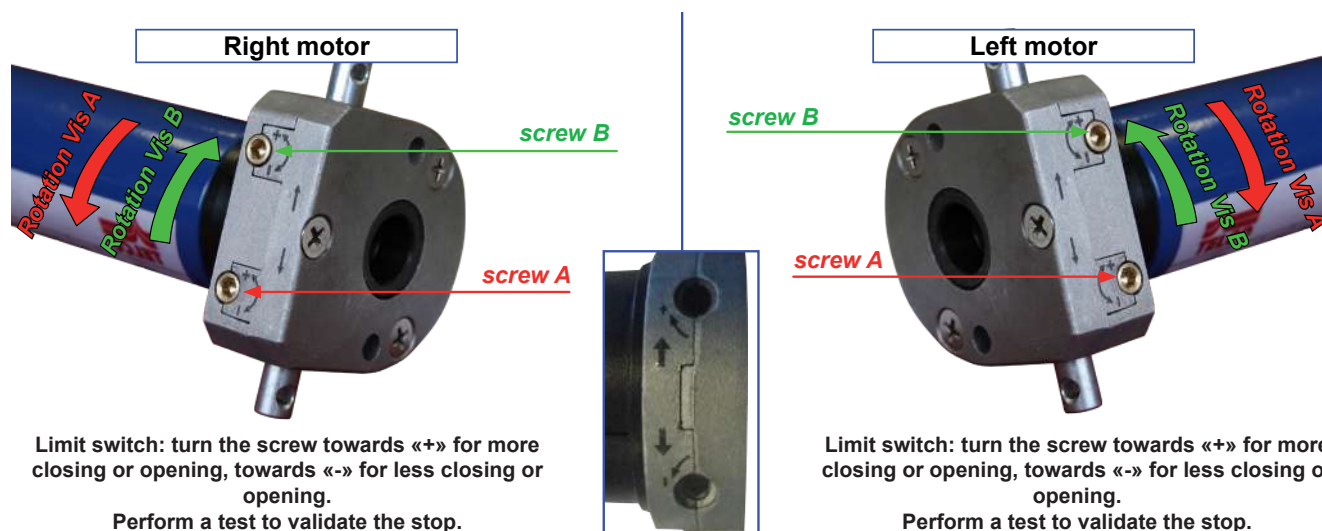
ATTENTION,

Do not wait for the lower opening limit switch.

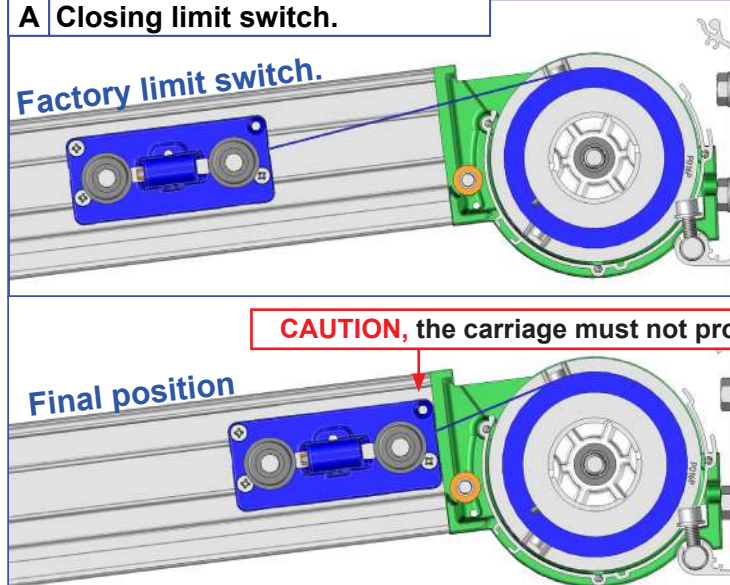
4 - Cut off the excess halyard.

25 Adjusting the motor limit switch.

To make the correct adjustment, locate your motor (right or left) and determine the direction of the roll of your fabric. The limit switch will be adjusted with the motor running. The fabric unrolls or rolls up 2 cm each time the key is turned.



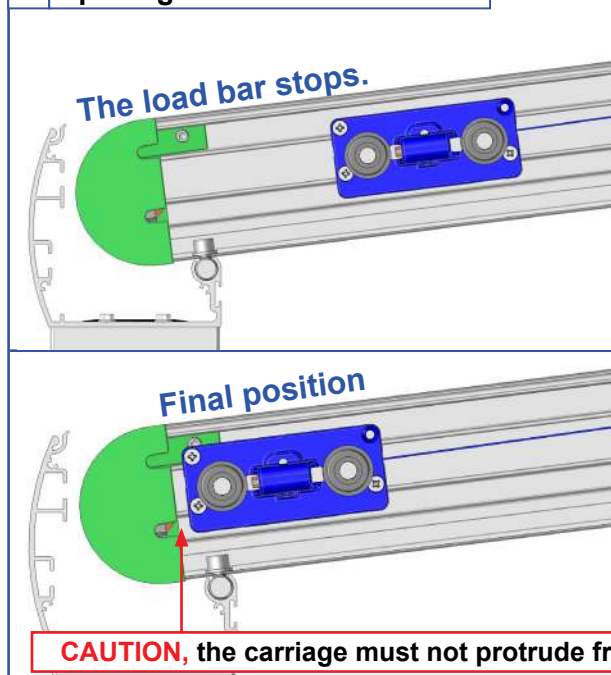
A Closing limit switch.



1 - Close the fabric to the closing stop preset in the factory.

2 - Activate the closing limit switch screw according to your configuration to place the sliding load bar in the final position.

B Opening limit switch.



1 - Open the fabric. If the sliding load bar does not stop on its own, stop it before reaching the front load bar.

2 - Reassemble the sliding load bar by 100mm.

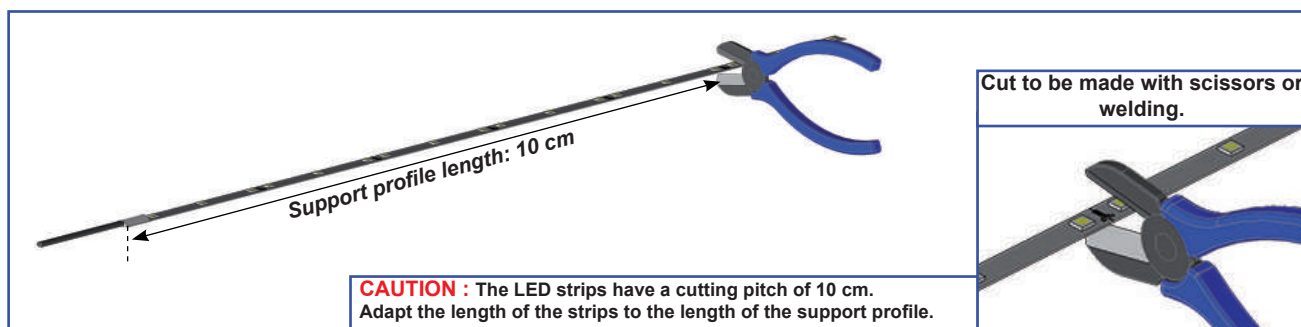
3 - Activate the opening limit switch screw according to your setting to reduce the opening limit switch.

4 - Open the tarp again. If the sliding load bar stops before reaching the load bar, go to step 5; otherwise, stop it and repeat operations 2 and 3 until the sliding load bar stops on its own.

5 - Activate the opening limit switch screw according to your settings to adjust the opening of the curtain. In the final position, the sliding load bar should enter the front load bar.

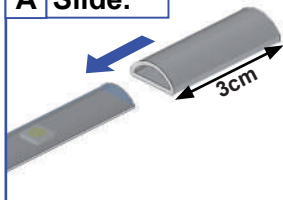
26 Installation of LED strips. LED lighting option only.

A Cut the LED strip.



Heat shrink sleeve. To be carried out at the cutting level of the LED strip.

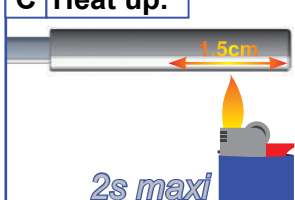
A Slide.



B In its place.



C Heat up.



D Hold.



E Fold.

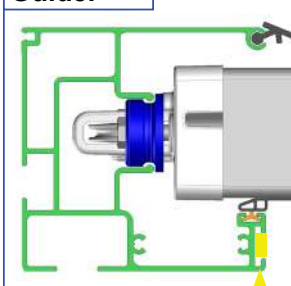


B Installation of the LED strips.

See the manual supplied with the automatism for the connection and programming of the LEDs.

Motor side.

Guide.

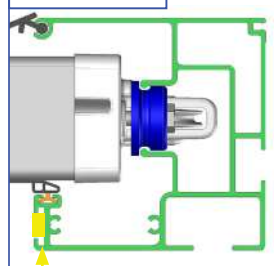


LED strip

Cable

Cable extension

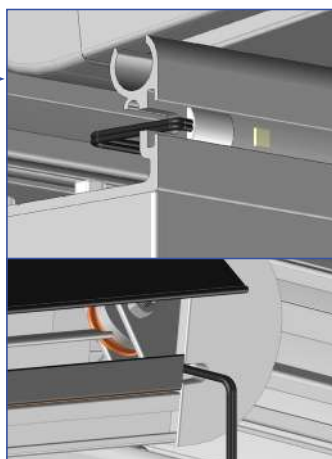
Guide.



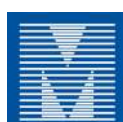
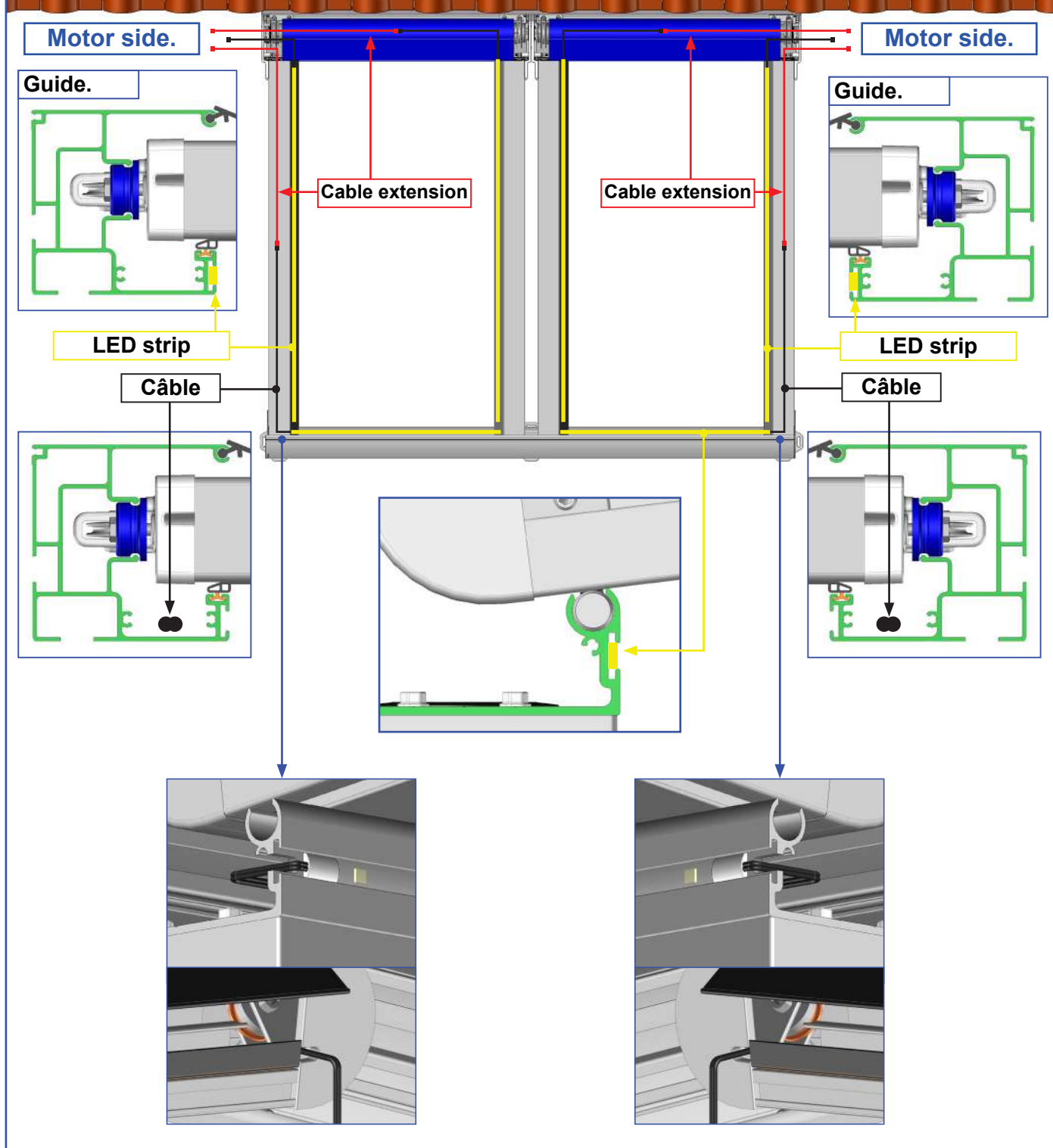
LED strip

Front cassette.

LED strip

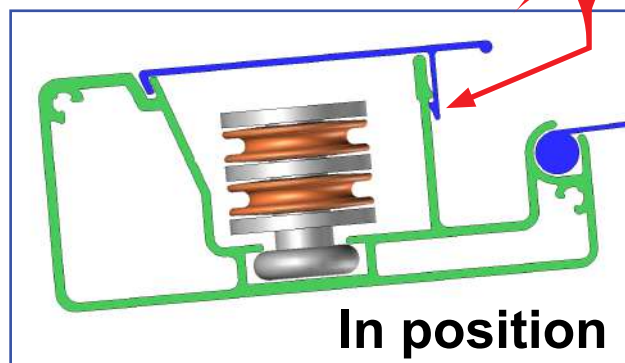
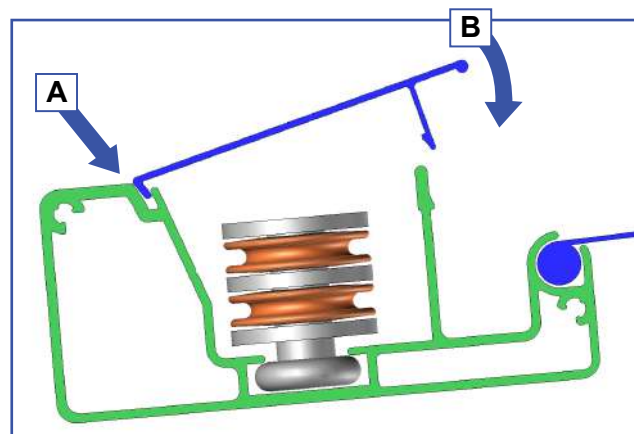


See the manual supplied with the automatism for the connection and programming of the LEDs.

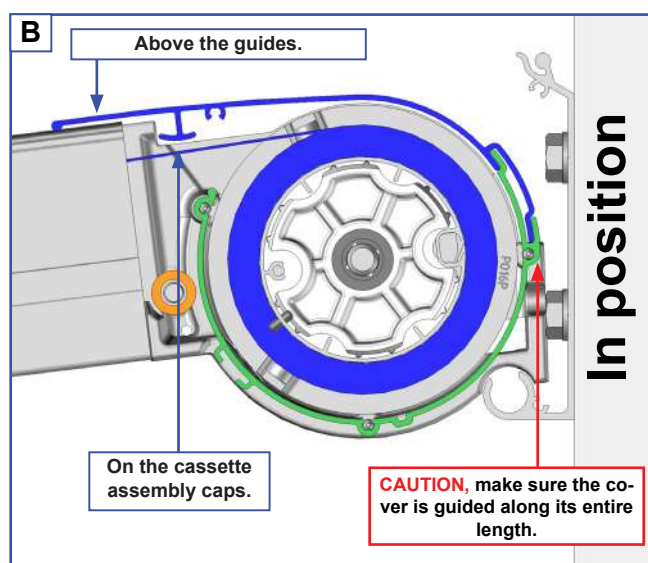
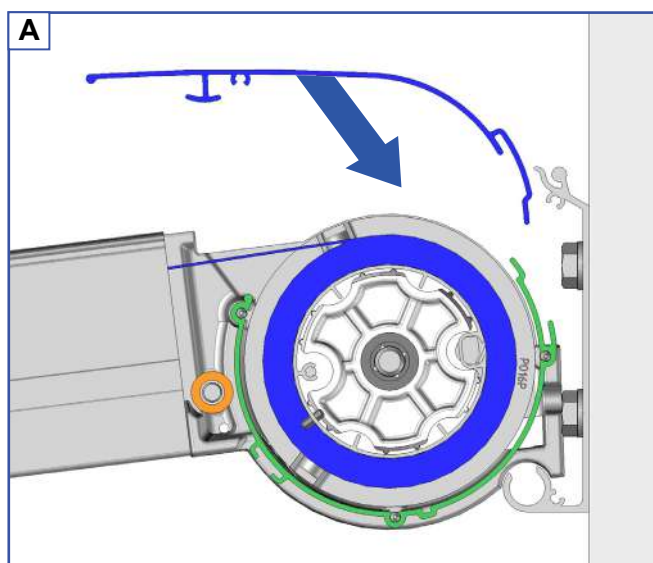


28 Installing the PU3704 load bar finishing profile.

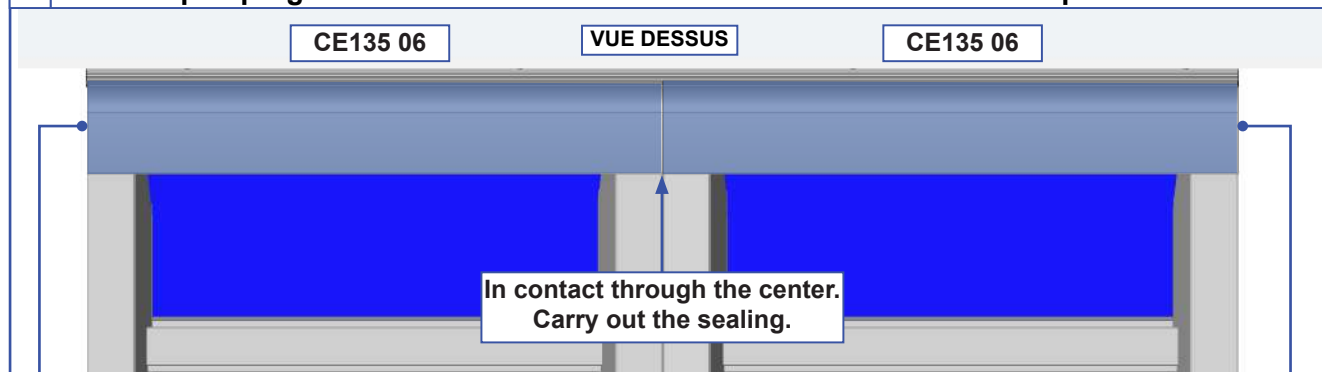
Note : PU3704 is placed under the guide joints.



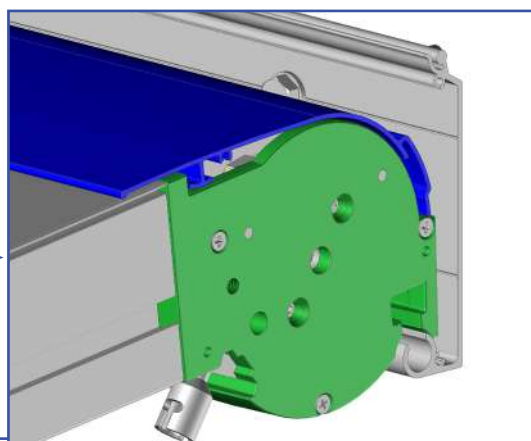
29 Installing the CE135 06 cassette cover of the cassette assembly.



C Double span pergola. Place the two cassette covers CE135 06 for each span.



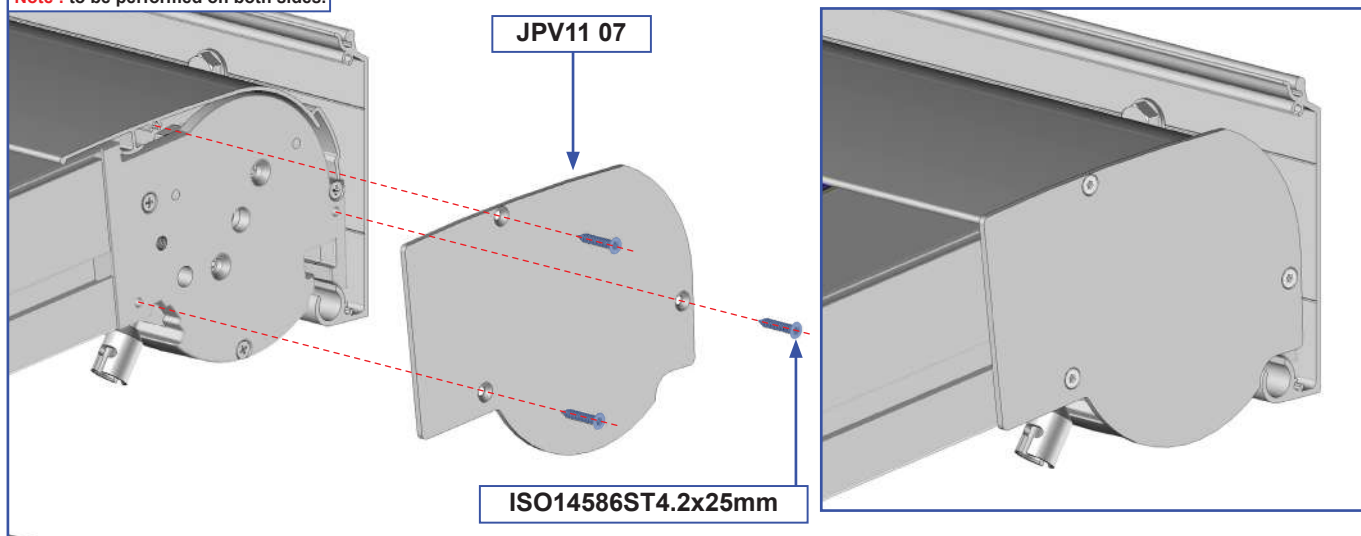
Flush with the cap.
Idem single span per-
gola.



Flush with the cap.
Idem single span per-
gola.

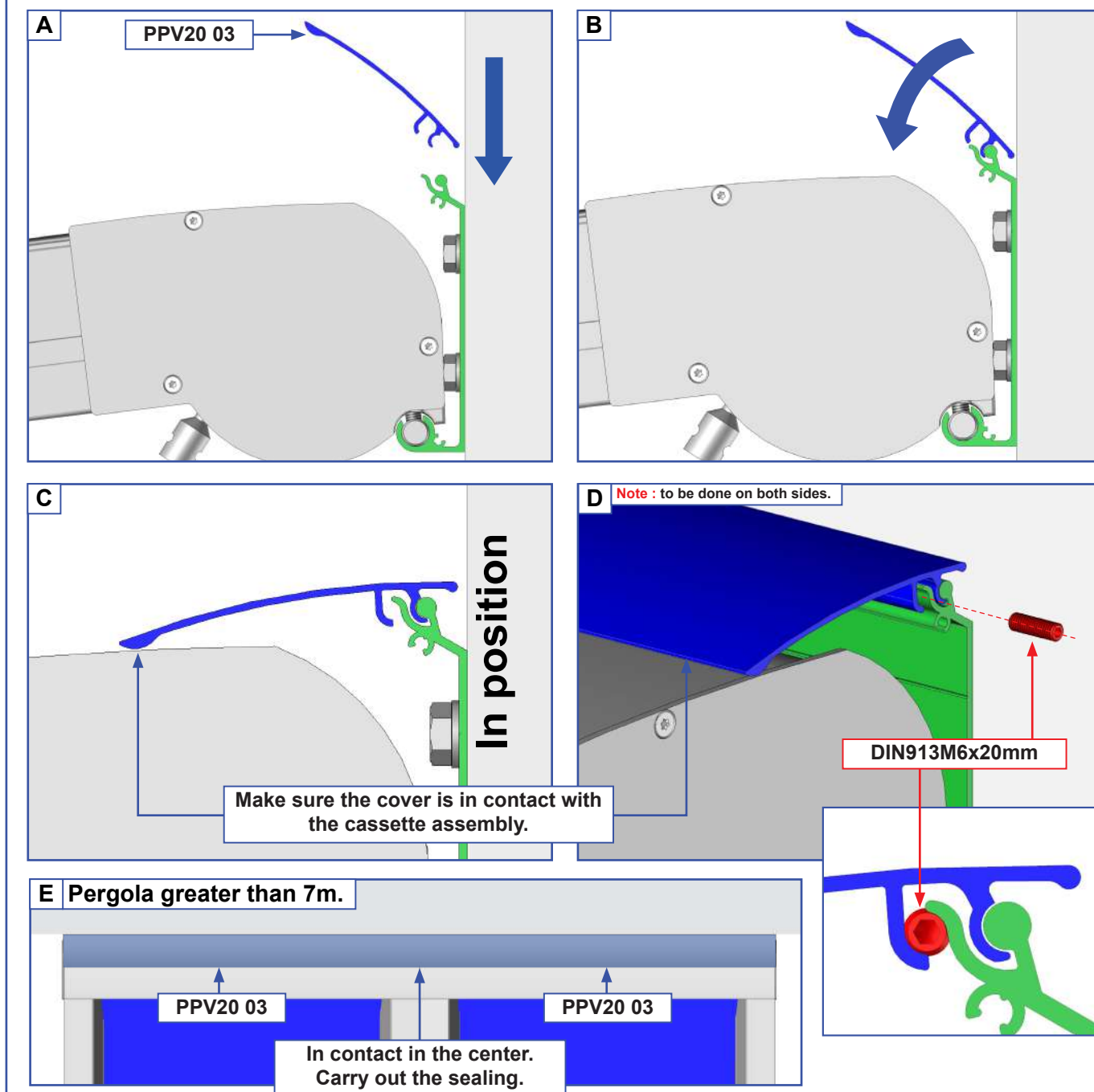
30 Installing the cassette assembly finishing caps.

Note : to be performed on both sides.

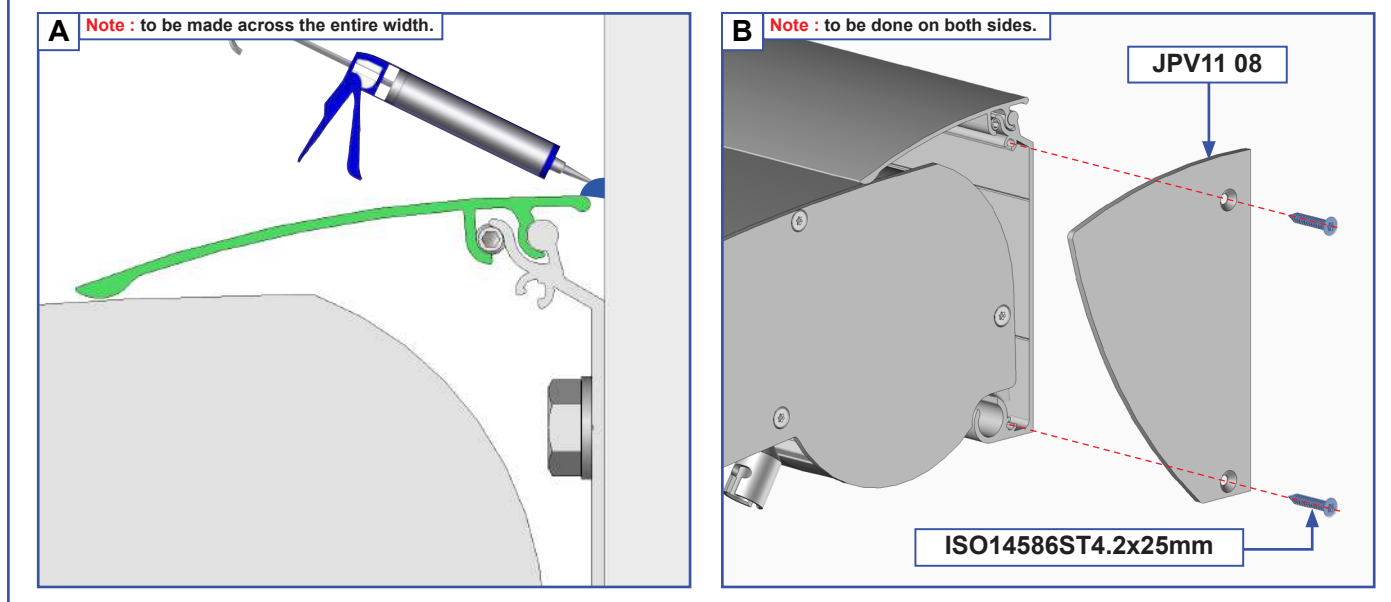


31 Installation of the wall profile cover.

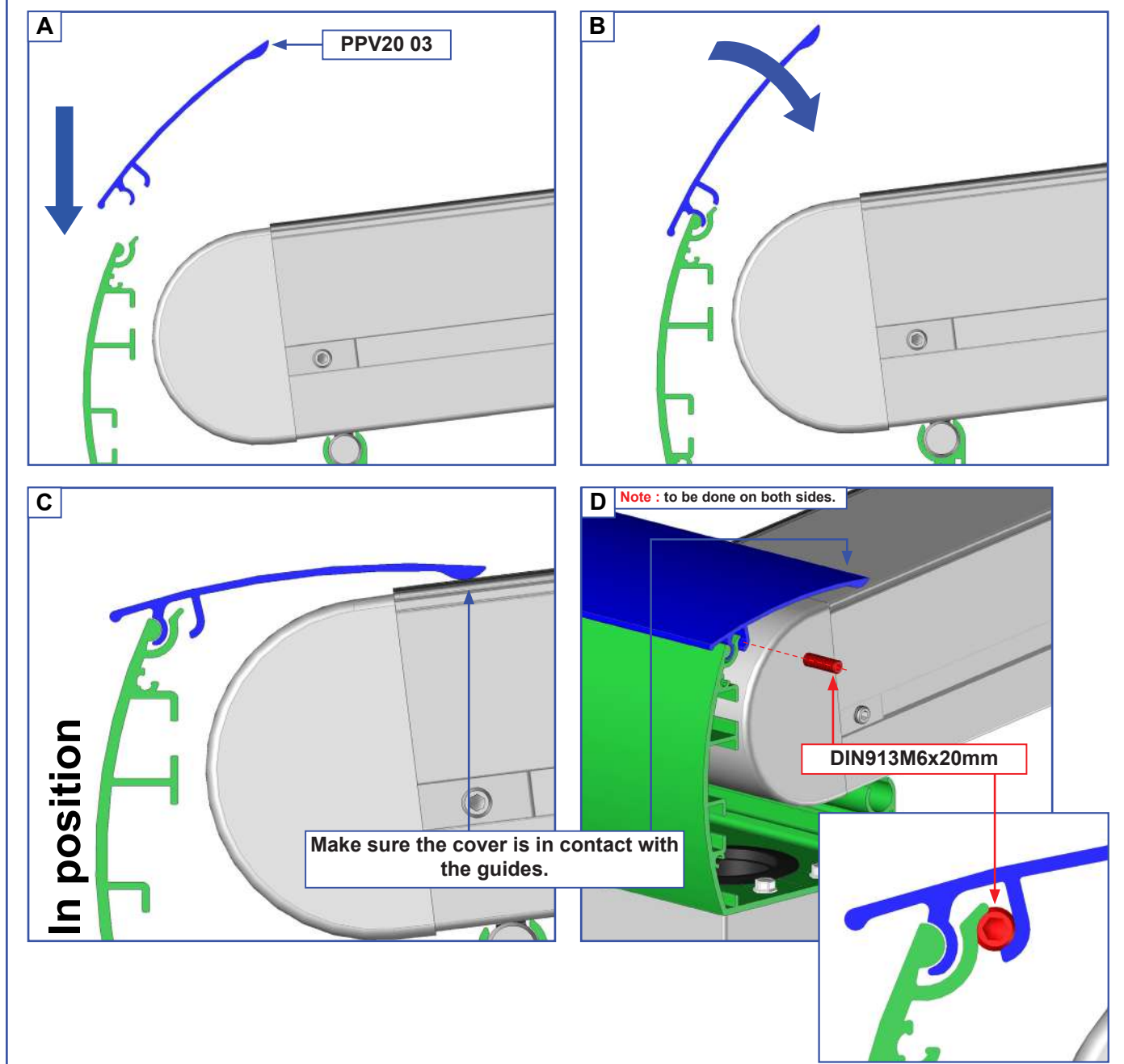
Note : PPV20 03 is the same length as the wall profile.



32 Sealing of the wall profile finishing cover.

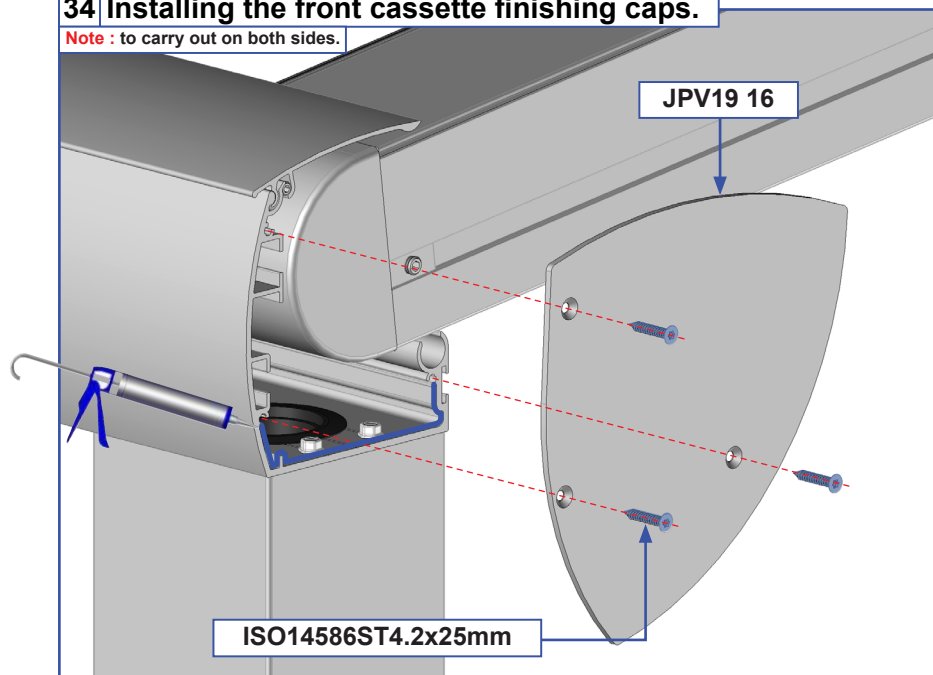


33 Installing the front cassette.



34 Installing the front cassette finishing caps.

Note : to carry out on both sides.



FAQ

1 - The load bar is bent when closing :

- Check that the fabric is well centered with respect to the guide.
- The rope comes off a pulley. Go through the entire rope route to find the location.
- The tension of one string is higher than the other. Check that the tension is identical on both sides.
- Incorrect squaring.

3 - The fabric is slack :

- Incorrect system voltage. Stop the opening of the fabric at the level of the lack of tension and tighten the fabric.

4 - Opening and closing impossible with functional electrical operation :

- Rope breakage. Check the complete route of the rope.

5 - The electrical maneuver no longer works :

- The motor enters thermal protection after 4 minutes of operation. Wait for the end of the thermal protection (20 minutes).
- Reprogram the remote control.
- Make sure the motor is running.
- Check the motor connection. Attention, cut off the power in case of manipulation.

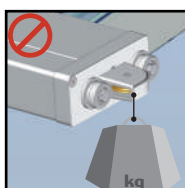
Maintenance tips for your fabric pergola.

A fabric pergola is subject to many restrictions: humidity, salty air, weight restriction, wind, etc.

Therefore, we recommend :

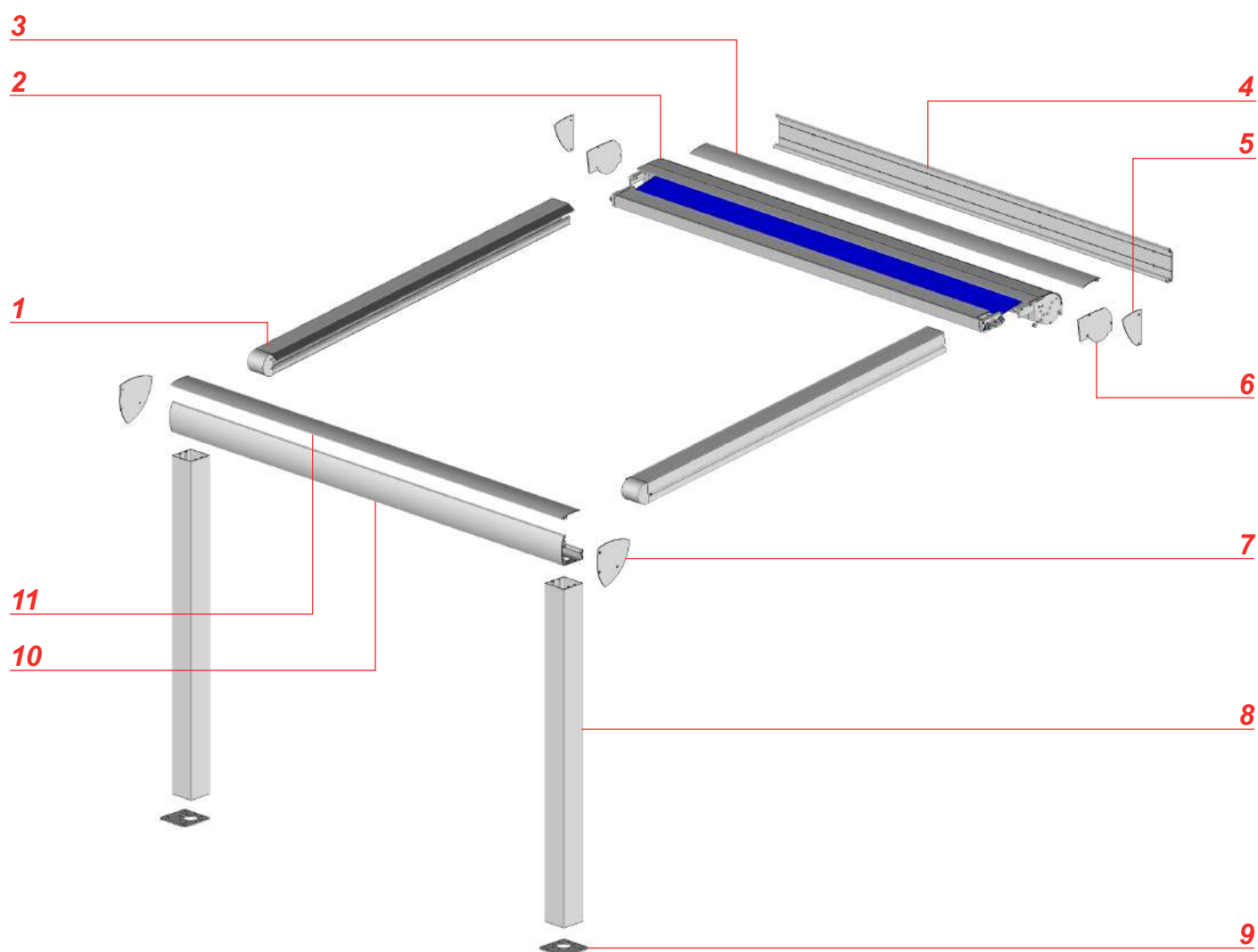
- ▶ **check** the screws and limit switches after installation, then regularly: at the beginning and end of the season.
- ▶ **never leave** the wet fabric rolled up. Dry as soon as possible.
- ▶ **clean** the fabric and the frame at the beginning and at the end of the season. Be careful not to use detergent.

Do not unroll the fabric in case of :



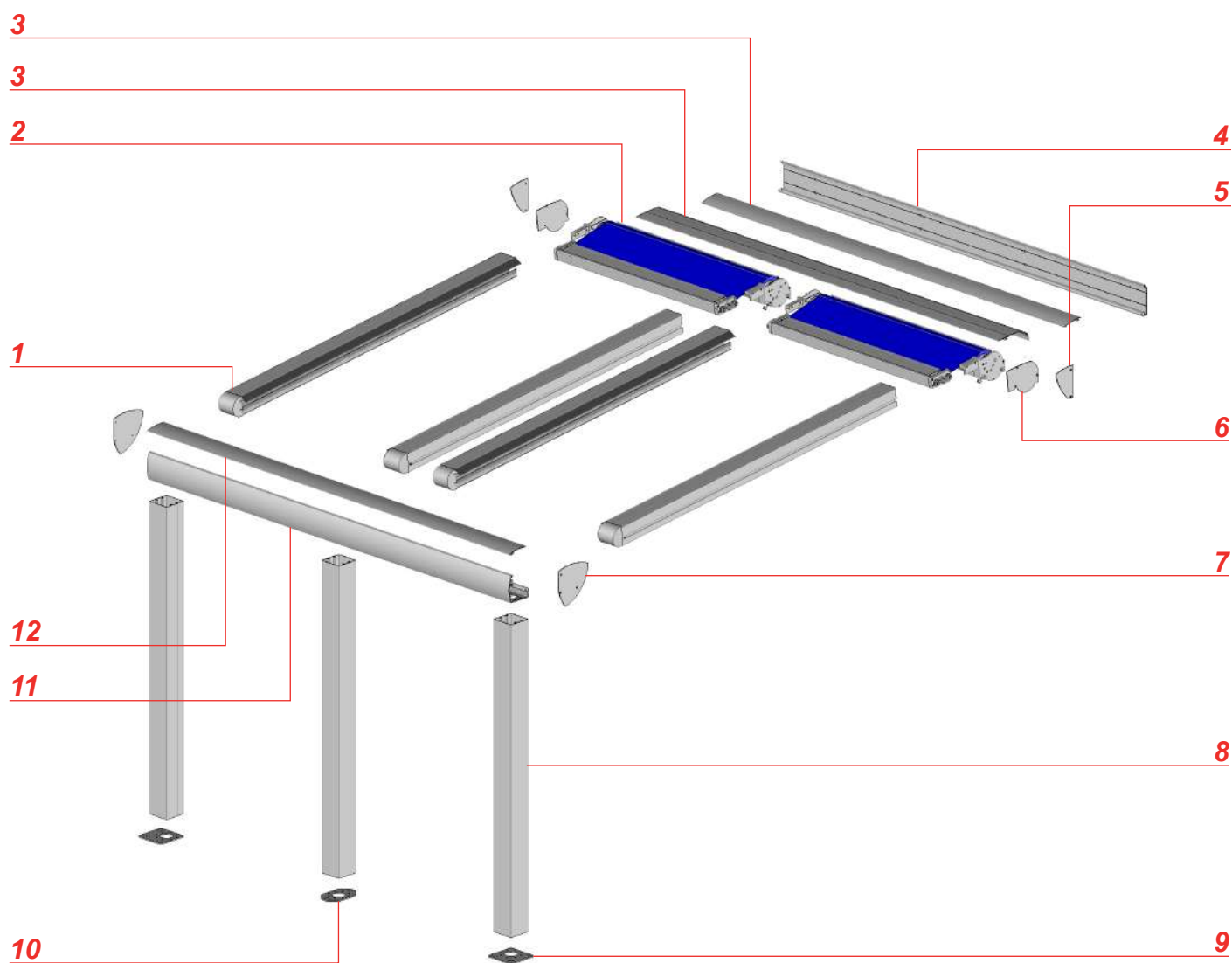
Do not hang anything

Simple span exploded view



No.	Reference	Description
1	Exploded section	Guides
2	Exploded section	Cassette assembly
3	PPV20 03	Wall profile cover
4	PPV11 02	Wall profile
5	JPV11 08	Wall profile finish cap
6	JPV11 07	Cassette assembly finish cap
7	JPV19 07	Front cassette finishing cap
8	PA29	Foot profile
9	ST38	Floor fixing plate
10	PPV19 05	Front cassette profile
11	PPV20 03	Front cassette cover profile

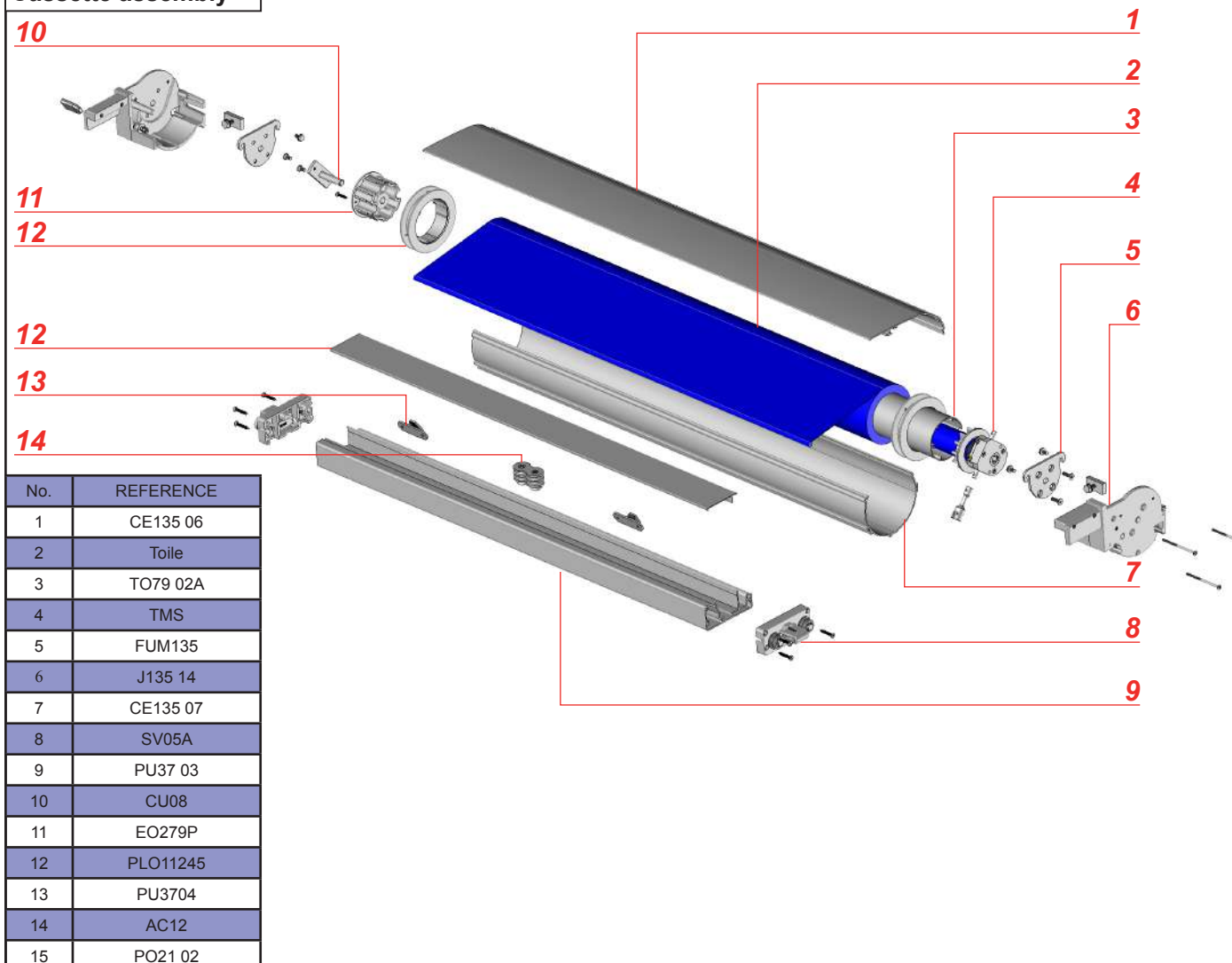
Double span exploded view



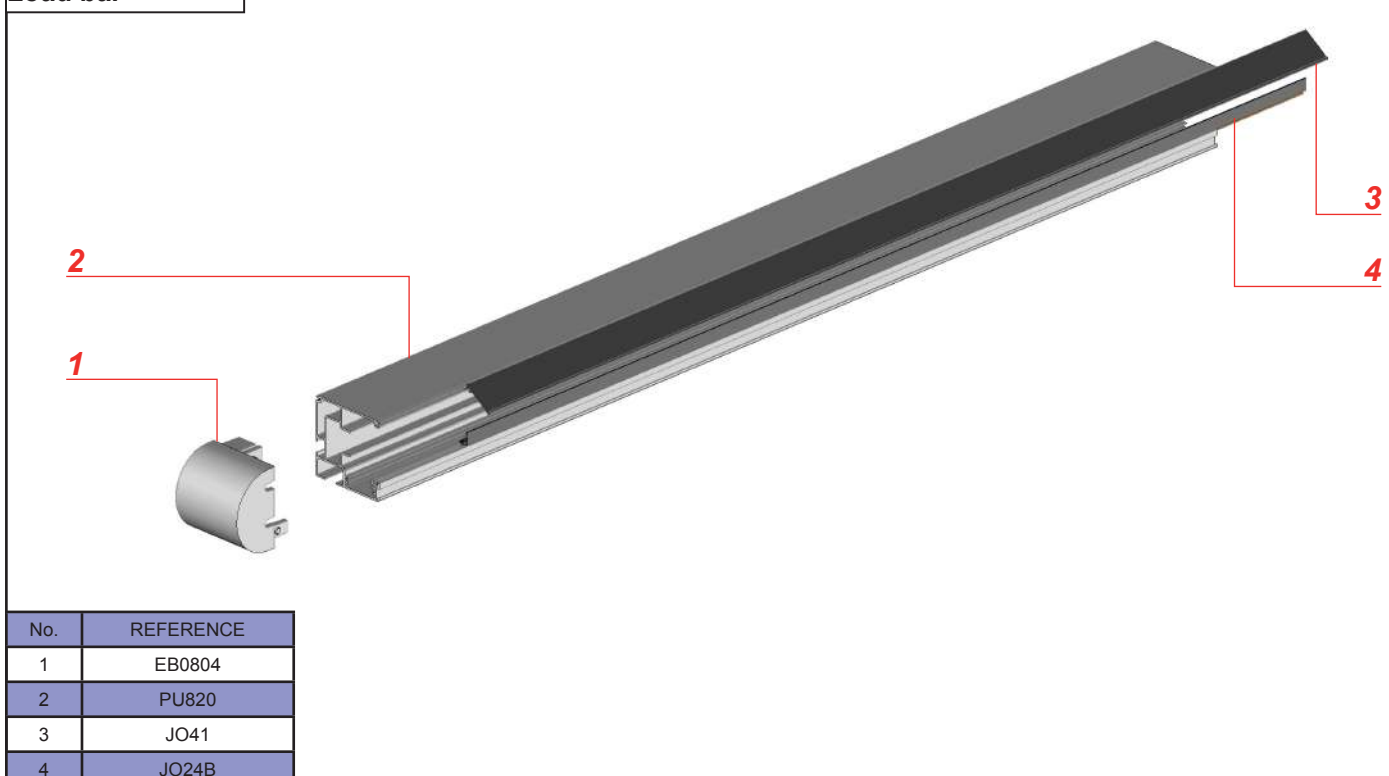
No.	Reference	Description
1	Exploded Section	Guides
2	Exploded Section	Cassette assembly
3	CE135 06	Cassette Profile
4	PPV20 03	Wall profile cover
5	PPV11 02	Wall profile
6	JPV11 08	Finishing caps for wall profile
7	JPV11 07	Cassette assembly finishing caps
8	JPV19 07	Front cassette finishing caps
9	PA29	Foot profile
10	ST38	Floor fixing plate
11	ST38 02	Intermediate floor fixing plate
12	PPV19 05	Front cassette profile
13	PPV20 03	Front cassette cover

Exploded sections

Cassette assembly



Load bar



Commercial Warranty

► Duration

The warranty period (mechanism, surface treatment and fabric) is granted for a duration of 5 years. The motor and all automation, LED strip and LED accessories are guaranteed for 2 years. Beyond this warranty period, these parts are chargeable.



The warranty period begins from the date of purchase of the product (date mentioned in the proof of purchase-receipt or invoice)..

The warranty only applies with proof of purchas

The use of the warranty does not have the effect of prolonging its duration

► Warranty application method

The warranty covers all problems encountered in the use of the product for any scheduled event and not excluded by the commercial warranty and within the warranty deadlines.

To be covered by a warranty coverage contract, the product must have been installed in accordance with the manufacturer's recommendations and not have been subject to abnormal use, such as:

- Insufficient or inconsistent maintenance of the attached «cleaning and maintenance» recommendations.
- The use of corrosive or abrasive cleaning products.
- Shock, break or false maneuver.
- Damages due to foreign bodies (sand, filings, etc.)
- Damages due to the non-conforming connection of a power line.

This list is not exhaustive, to obtain the list of incidents «likely to trigger the warranty» and those «excluding the warranty» see the inserts below. The warranty is limited to the repair or replacement of the defective part or that is responsible for the malfunctioning of the device by an identical part.

The guarantee does not cover, in any case, travel expenses and direct and indirect damages. Likewise, it does not apply to the expenses of removal and installation of the product subject to the warranty claim, except in the context of the application of the warranty of hidden defects.

Incidents likely to trigger the warranty

Defects found	Type of incidents	Comments
General	<ul style="list-style-type: none">- Defective pieces- Defective engine- Faulty automation.....- Defect of material- Defect of finish	<p>In case the malfunction comes from a manufacturing defect.</p> <p>Remote control, receiver automation, wind sensor, sun sensor.</p> <p>Burrs, lack of material, cracks, deformations.</p> <p>Lacquer defect, tones.</p>

Expedition of spare parts:

- 72 hours after reception in our offices for motors and automatisms.
- 72 hours for the dispatch of other spare parts (excluding frame).
- The redirections are in charge of MITJAVILA

Causes of exclusion of the warranty

Defects found	pe of incidents	Comments
General	<ul style="list-style-type: none">- Defective components- Normal wear of the slats.....- Any kind of shock- Degradations- Modified products- Professional use of the awning- Products stored in a humid environment..... Possible deterioration of the engine.	<p>Due to a non-compliant installation or use.</p> <p>Dirt, deterioration due to different pollution factors.</p> <p>Scratches, lack of pieces, tears of the acquisition of a product without its original packaging.</p> <p>Linked to any negligence, vandalism, falling objects, burns, impetuous wind, cleaning with a non-conforming product.</p> <p>Addition or replacement of parts other than those sold by MITJAVILA</p>
Fabric	the phenomena of embossed folds, tears or holes inherent in the texture of the fibre	
Settings	- Motor settings, tilt or any other setting.	