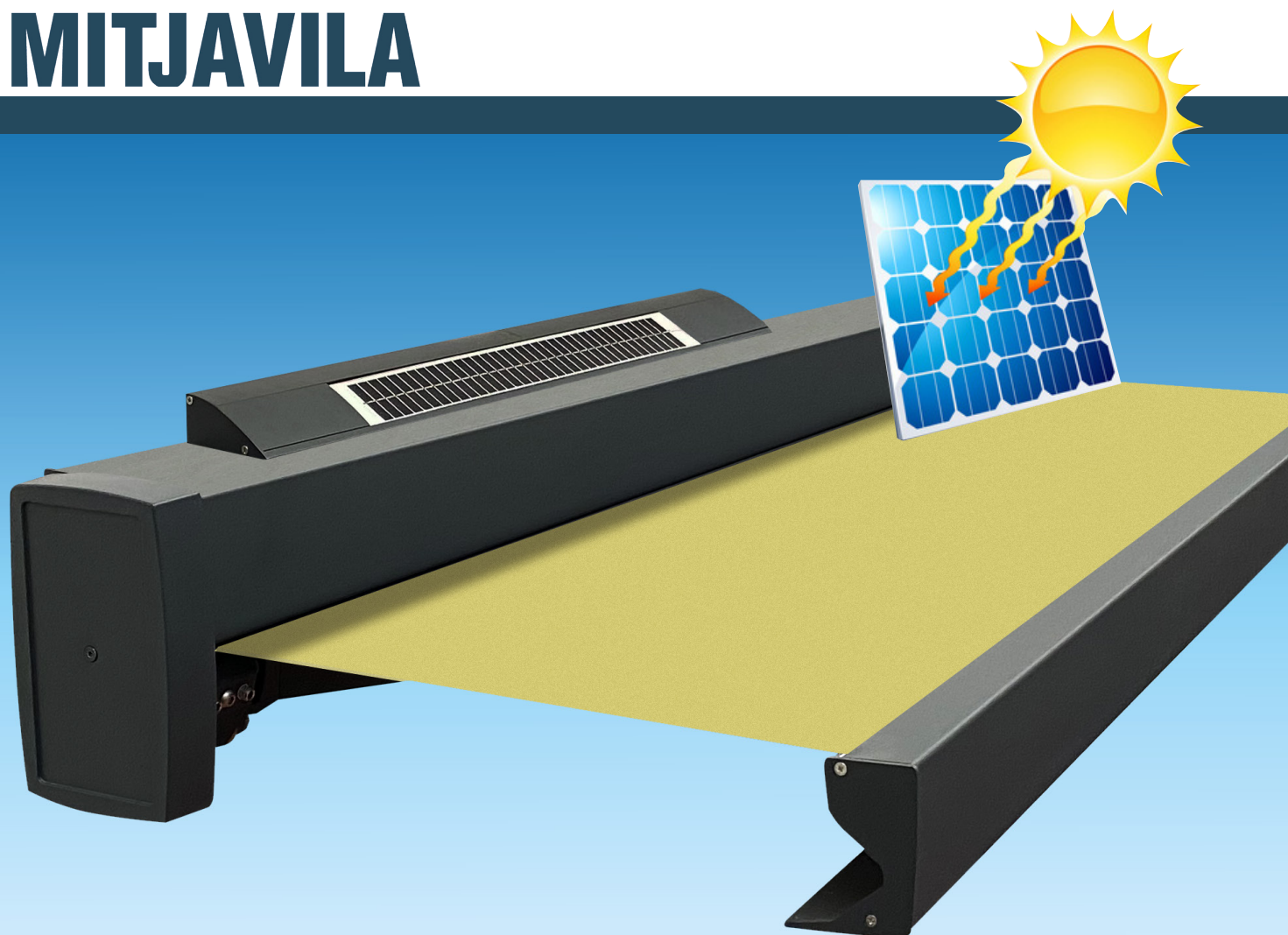


# MITJAVILA



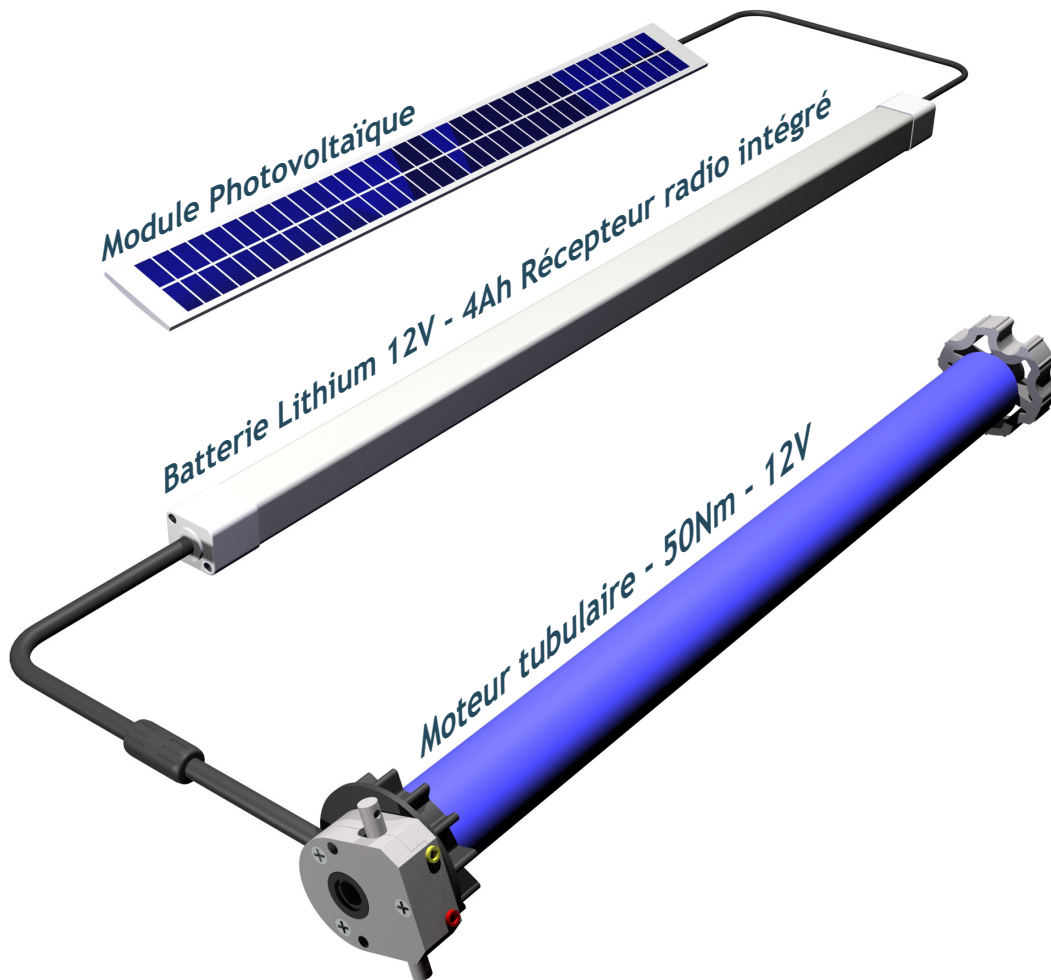
## KIT SOLAIRE Motorisation 12V

- Pas d'installation de ligne 230V
- Batterie grande capacité
- Profilé Aluminium
- Moteur TMS50CC courant continu
- Fixation 30° ou 60°

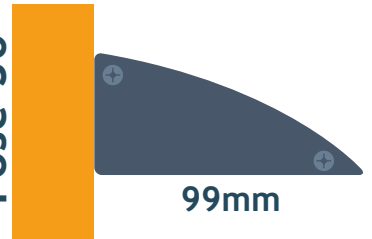


[www.mitjavila.com](http://www.mitjavila.com)

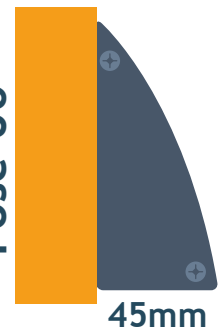
# Les Caractéristiques



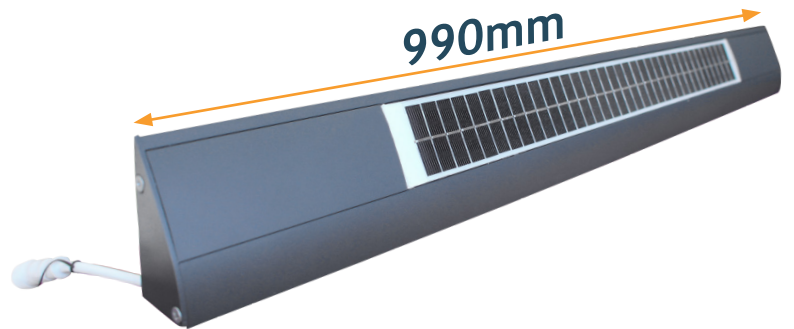
Pose 30°



Pose 60°



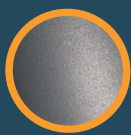
990mm



Dimensions :

Longueur : **990mm**

Module PV : **640x60x4mm**



**RAL7016-ST**  
Gris Anthracite



**RAL9010**  
Blanc brillant



[www.mitjavila.com](http://www.mitjavila.com)

